

(Fold Inward) — — — — ▶

(Back Cover)

(Front Cover)

Answering/Ending Phone Calls

When paired, you can control your paired device's phone functions using your device, or the controls on the earbuds listed below.

- 1x press the **[Multi]** button on either earbud to **answer** an incoming phone call.
- 1x press the **[Multi]** button on either earbud to **end** a phone call.
- **Press and hold** the **[Multi]** button on either earbud to **reject** an incoming call.
- 4x press the **[Multi]** button on either earbud to **redial** the last outgoing phone number dialed.

Activating Voice Assistant

If your Bluetooth-paired device has a Voice Assistant, you can activate it using the controls on the earbuds.

- 3x press the **[Multi]** button on either earbud to activate Voice Assistant.

Re-Pairing the Earbuds

The PTWSA30 earbuds should pair to each other automatically when powered ON. If the earbuds come un-paired from each other, or only one earbud pairs to your device, try following these instructions to re-pair:

1. Go to your device's Bluetooth settings and find the earbuds on the list of Bluetooth devices. Tap to manually **"Forget"** the earbuds(s), then turn your device's Bluetooth OFF.
2. Place the earbuds in their case to power them OFF, then remove them to power them ON again.
3. After a moment, the earbuds should automatically re-pair to each other. A tone will be heard indicating that they have paired to each other.
4. Once re-paired, you can now pair the earbuds to your mobile device. Turn your device's Bluetooth back on again. Follow the instructions in the **Bluetooth Pairing** section of this manual to try pairing again.

Compatibility

The PTWSA30 wireless charging pad is compatible Qi-enabled devices, such as:

iPhone XS Max / XS / XR / 8 / 8 Plus / X, Asus Padfone S, BlackBerry Z30 (Verizon), Blackberry Classic, Cat Catphone S50, DeWalt MILB10G, Google Pixel 3 XL, Google Pixel 3, Google Nexus 4 / 5 / 6 / 7, HP Elite X3, HTC 8X (Verizon), HTC Droid DNA (Verizon), HTC Thunderbolt (Verizon), Huawei Mate 20 Pro / 20 RS Porsche Design / RS Porsche Design, LG Optimus G Pro, LG G4, LG G6, LG V30, LG G3, Kyocera Hydro Elite, Kyocera Ubano L03, Kyocera Torque, Kyocera Urbano L01, Kyocera Torque G02, Lumia 950, Lumia 950 Dual Sim, Lumia 950XL, Motorola Droid Max, Motorola Droid Turbo, MOTO 360, Motorola Droid Mini, M.T.T Master 4G, Nokia Lumia 830, M.T.T Master, Nokia Lumia 735 / 928 / 1520 / 920 / 930, Razer Phone 2, Saygus V Squared, Samsung Galaxy S8 / S8+ / 9 / 9+, Samsung Galaxy Note 8 / 9, Samsung S6 / S6 Edge / S6 Edge+ / S7 / S7 Edge, Samsung Note 5 / 7, Sharp Aquos 3 HE, Sony BSP10, Sony Xperia Z4V / Z3V, Techdy Basic Bear, Xiaomi MI Mix 2S, Vertu Signature Touch, Yotaphone 2

...and more.

Please check your mobile device's user manual or documentation to see if it is compatible with the Qi charging standard. This item is NOT compatible with AirFuel/PMA charging standards.

Compliance Information

FCC Information

This device complies with Part 15 of the FCC Rules.

Caution: Any changes or modifications not expressly approved could void the user's authority to operate the equipment.

Note: This equipment has been tested and found to comply with the limits for a Class B digital device, pursuant to part 15 of the FCC Rules. These limits are designed to provide reasonable protection against harmful interference in a residential installation. This equipment generates, uses and can radiate radio frequency energy and, if not installed and used in accordance with the instructions, may cause harmful interference to radio communications. However, there is no guarantee that interference will not occur in a particular installation. If this equipment does cause harmful interference to radio or television reception, which can be determined by turning the equipment off and on, the user is encouraged to try to correct the interference by one or more of the following measures:

- Reorient or relocate the receiving antenna.
- Increase the separation between the equipment and receiver.
- Connect the equipment into an outlet on a circuit different from that to which the receiver is connected.
- Consult the dealer or an experienced radio/TV technician for help.

This device complies with Part 15 of the FCC Rules. Operation is subject to the following two conditions: (1) This device may not cause harmful interference, and (2) this device must accept any interference received, including interference that may cause undesired operation.

Radiation Exposure Information

The device has been evaluated to meet general RF exposure requirement. The device can be used in portable exposure condition without restriction.

WARNING: Li-ion Battery Inside

This product is fitted with a Li-ion battery. Do not damage, open, or dismantle the battery and do not use it in damp and/or corrosive conditions. Use only with compatible chargers. Never dispose of batteries in a fire, and never expose them to high temperatures. Do not expose the product to temperatures exceeding 60°C (140°F).



Rating Label Definitions

⎓ Direct current symbol.

♻️ This symbol signifies the product must not be discarded as household waste, and should be delivered to an appropriate collection facility for recycling. Proper disposal and recycling helps protect natural resources, human health and the environment.

ⓁⓇ This symbol signifies and declares that this equipment has battery charging which complies with California CEC and energy efficiency.

Bluetooth This symbol signifies that this is a wireless device powered by Bluetooth® technology. The Bluetooth® word mark and logos are registered trademarks owned by the Bluetooth SIG, Inc. and any use of such marks by Southern Telecom is under license.

Ⓢ This symbol represents FCC Declaration of Conformity and compliance.

Warranty Information

90-day Limited Warranty

Territory: United States/Canada

LIMITED WARRANTY TO ORIGINAL CONSUMER

This product (including any accessories included in the original packaging) as supplied and distributed new by an authorized retailer is warranted by Southern Telecom, Inc. to the original consumer purchaser against defects in materials and workmanship ("Warranty") as follows:

To obtain warranty service:

- Visit our customer support portal: www.customersupport123.com
- Select the brand and model of your device
- Select **Service Request** and fill out the form to begin your inquiry
- Exchanges require dated proof of purchase from an authorized retailer

Your product will be repaired or replaced, at our option, for the same or similar model of equal value if examination by the service center determines this product is defective. Products received damaged as a result of shipping will require you to file a claim with the carrier.

Warranty service not provided

This warranty does not cover damage resulting from accident, misuse, abuse, improper installation or operation, lack of reasonable care, unauthorized modification including software modifications such as the installation of custom firmware. This warranty is voided in the event any unauthorized person opens, alters or repairs this product. All products being returned to the authorized service center for repair must be suitably packaged.

NO WARRANTIES, WHETHER EXPRESS OR IMPLIED, INCLUDING, BUT NOT LIMITED TO, ANY IMPLIED WARRANTIES OF MERCHANTABILITY OR FITNESS FOR A PARTICULAR PURPOSE, OTHER THAN THOSE EXPRESSLY DESCRIBED ABOVE SHALL APPLY. DISTRIBUTOR FURTHER DISCLAIMS ALL WARRANTIES AFTER THE EXPRESS WARRANTY PERIOD STATED ABOVE. NO OTHER EXPRESS WARRANTY OR GUARANTEE GIVEN BY ANY PERSON, FIRM OR ENTITY WITH RESPECT TO THE PRODUCT SHALL BE BINDING ON DISTRIBUTOR, REPAIR, REPLACEMENT, OR REFUND OF THE ORIGINAL PURCHASE PRICE - AT DISTRIBUTOR'S SOLE DISCRETION - ARE THE EXCLUSIVE REMEDIES OF THE CONSUMER. IN NO EVENT WILL DISTRIBUTOR OR ITS MANUFACTURERS BE LIABLE FOR ANY INCIDENTAL, DIRECT, INDIRECT, SPECIAL, PUNITIVE OR CONSEQUENTIAL DAMAGES (SUCH AS, BUT NOT LIMITED TO, DAMAGES FOR LOSS OF PROFITS, BUSINESS, SAVINGS, DATA OR RECORDS CAUSED BY THE USE, MISUSE OR INABILITY TO USE THE PRODUCT, EXCEPT AS STATED HEREIN. NO OTHER WARRANTIES SHALL APPLY. NOTWITHSTANDING THE FOREGOING, CONSUMER'S RECOVERY AGAINST DISTRIBUTOR SHALL NOT EXCEED THE PURCHASE PRICE OF THE PRODUCT SOLD BY DISTRIBUTOR. THIS WARRANTY SHALL NOT EXTEND TO ANYONE OTHER THAN THE ORIGINAL CONSUMER WHO PURCHASED THE PRODUCT AND IS NOT TRANSFERABLE.

Some countries, states or provinces do not allow the exclusion or limitation of incidental or consequential damages or allow limitations on warranties, so limitation or exclusions may not apply to you. This warranty gives you specific legal rights, and you may have other rights that vary from state to state or province to province. Contact your authorized retailer to determine if another warranty applies.



Have questions? We've got answers.

Visit us at customersupport123.com



©2021. All rights reserved.

Polaroid, Polaroid Color Spectrum and Polaroid Classic Border Logo are trademarks of PLR IP Holdings, LLC, used under license. PLR IP Holdings LLC, does not manufacture this product or provide any manufacturer's warranty or support.



PTWSA30
True Wireless Audio Bundle
User Manual

Before You Begin...

READ THIS MANUAL CAREFULLY AND SAVE FOR FUTURE REFERENCE

Caution

To ensure safe and proper use, read all safety information before using the device. Only use with manufacturer-approved batteries, chargers, accessories, and supplies.

- **THIS DEVICE IS NOT A TOY.** do NOT allow children or pets to use or play with this device.
- Do not disassemble, modify, or repair the device.
- Do not expose to extreme temperatures (heat or cold), open flames, humid, or wet conditions.
- **Do not submerge in water.**
- Low power may cause poor Bluetooth connection or sound distortion.
- Do not overcharge battery.
- If using with a USB adapter, make sure the adapter is not damaged.
- Do not allow the USB port or the connectors of the supplied USB cable to be exposed to dust or water, or to come into contact with any conductive materials such as liquids, metallic powders, etc.
- The earbuds and case contain built-in batteries, and should not be disposed of with regular household waste. Please consult the local authorities on the correct way to dispose of this device.

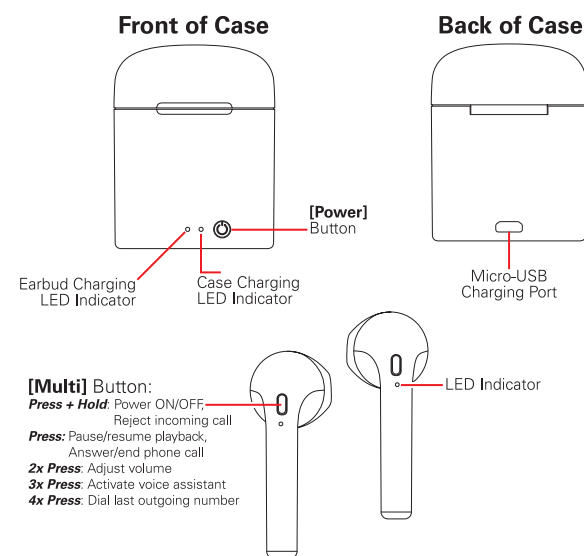
Customer Support

For any questions or problems with your product, please visit our website at customerservice123.com.

In the Box

- PTWSA30 True Wireless Earbuds (x1)
- Charging Case (x1)
- Wireless Charging Pad (x1)
- Silicone Protective Case Cover (x1)
- Carabiner (x1)
- Silicone Safety Strap (x1)
- Silicone Eartips (x2)
- USB Charging Cable (x1)
- User Manual (x1)

Location of Controls



[Multi] Button:

- Press + Hold:** Power ON/OFF, Reject incoming call
- Press:** Pause/resume playback, Answer/end phone call
- 2x Press:** Adjust volume
- 3x Press:** Activate voice assistant
- 4x Press:** Dial last outgoing number

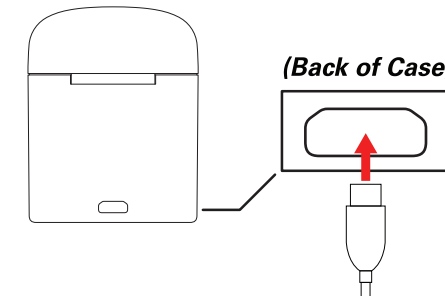
Getting Started

Charging the Case

The earbud charging case can either be charged directly, as described below, or wirelessly using the included wireless charging pad. See the Charging the Case Wirelessly section on the next page for wireless charging pad instructions.

To charge directly, insert the small connector of the supplied micro-USB charging cable into the micro-USB charging port on the back of the charging case. Insert the large connector into a USB power source, such as the USB port on a computer, or into a **5V USB adapter** (not included) and plug into a wall socket.

The case-charging LED indicator will flash **RED** while charging, and will turn **solid RED** when fully charged.



Charging the Case Wirelessly

1. To set up the wireless charging pad, insert the small connector of the included micro-USB cable into the power port on the side of the included wireless charging pad. Insert the larger connector into the USB port on a computer, or into a 5V/2A USB adapter (not included) and plug into an electrical outlet.

The LED indicator will flash **BLUE** and then light up solid **BLUE** when it is first connected to power, and turn **OFF** after awhile when it enters a standby mode.

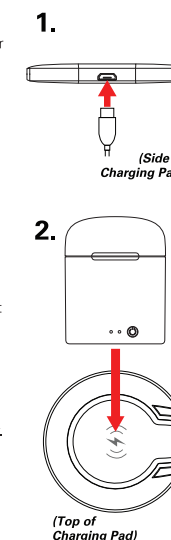
Note: The charging case cannot charge with the silicone protective case on it. To charge, you must remove it.

2. Place the case **backside down** in the center of the wireless charging pad. It should automatically begin charging. If it does not begin to charge, try repositioning it on the charging pad. When the wireless charging pad is charging, the LED indicator will slowly breathe **BLUE**.

You can also use the wireless charging pad to charge any Qi-enabled device. Consult your device's user manual and the **Compatibility** section of this manual. Note that you may need to remove your device's case to charge wirelessly.

Warning:

- Do NOT place any metal object onto the charging pad.
- Magnetic strip cards, including credit cards, phone cards, identification cards and boarding passes may be damaged by the magnetic field if placed on or near this device.
- Do not place this device on or near a microwave or similar appliance.



Charging the Earbuds

Use the included charging case to protect and charge the earbuds as described below.

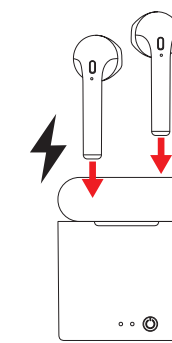
1. Make sure that the case is fully charged.
2. Open the cover of the charging case and press the earbuds firmly into the correct charging ports. The earbuds' LED indicators will light up when they are charging.
3. When the earbuds are charging correctly, their LED indicators will **light up RED** while they are charging, and **turn BLUE** when fully charged.

Note: A tone will be heard when the earbuds are low on battery. Please recharge when this happens.

Powering ON/OFF

- The earbuds will automatically power ON when removed from their case, and power OFF when placed into their case.
- When powered ON, the earbuds will automatically pair to each other and then enter Bluetooth pairing mode. They may automatically re-pair to a previously-paired device in range.
- The earbuds can also be powered ON and OFF by **pressing and holding** the **[Multi]** buttons.

Note: A tone will automatically power OFF if they do not connect to a Bluetooth device after 3 minutes.



Adjusting Volume & Playback

To listen to music and talk on the phone using your True Wireless Earbuds, you must pair them to a Bluetooth-enabled device. If you are pairing the device for the first time, please see the **Bluetooth Pairing** section on the next page.

- Once paired, playback can be controlled through your paired device, or with the controls on the earbuds below.
- 1x press the **[Multi]** button on either earbud to pause or resume playback.
- **Short press + hold** the **[Multi]** button on the **right earbud** to skip to the **next track**.
- **Short press + hold** the **[Multi]** button on the **left earbud** to skip to the **previous track**.

Bluetooth Pairing

1. Power the earbuds ON. Both of their LED indicators will **flash RED and BLUE**.
2. After a moment, a tone will be heard on the earbuds indicating that they have paired to each other. The LED indicator on **one earbud** will **flash RED and BLUE**.
3. Set your mobile device to search for Bluetooth devices. When it appears, select **PTWSA30** from the list of found devices.
4. Once successfully paired to your device, a tone will be heard and the LED indicators on both earbuds will flash **BLUE** every 5 seconds.

Pairing Issues? See the **Re-Pairing the Earbuds** section on the next page.