

# User Manual

PTWSA10

(Fold Inward) - - - - ▶

(Back Cover)

(Front Cover)

## Re-Pairing the Earbuds

The PTWSA10 earbuds should pair to each other automatically when powered ON. If the earbuds come un-paired from each other or only one earbud pairs to your device, try following these instructions to re-pair:

1. Go to your device's Bluetooth settings and find the earbuds on the list of Bluetooth devices. Tap to manually **"Forget"** the earbud(s), then turn your device's Bluetooth OFF.
2. Place the earbuds in their case to power them OFF; then remove them to power them ON again.
3. After a moment, the earbuds should automatically re-pair to each other. A voice will be heard indicating that they have paired to each other.
4. Once re-paired, you can now pair the earbuds to your mobile device. Turn your device's Bluetooth back on again. Follow the instructions in the **Bluetooth Pairing** section of this manual to try pairing again.

## Compliance Information

### FCC Information

This device complies with Part 15 of the FCC Rules.

**Caution:** Any changes or modifications not expressly approved could void the user's authority to operate the equipment.

**Note:** This equipment has been tested and found to comply with the limits for a Class B digital device, pursuant to part 15 of the FCC Rules. These limits are designed to provide reasonable protection against harmful interference in a residential installation. This equipment generates, uses and can radiate radio frequency energy and, if not installed and used in accordance with the instructions, may cause harmful interference to radio communications. However, there is no guarantee that interference will not occur in a particular installation. If this equipment does cause harmful interference to radio or television reception, which can be determined by turning the equipment off and on, the user is encouraged to try to correct the interference by one or more of the following measures:

- Reorient or relocate the receiving antenna.
- Increase the separation between the equipment and receiver.
- Connect the equipment into an outlet on a circuit different from that to which the receiver is connected.
- Consult the dealer or an experienced radio/TV technician for help.

This device complies with Part 15 of the FCC Rules. Operation is subject to the following two conditions: (1) This device may not cause harmful interference, and (2) this device must accept any interference received, including interference that may cause undesired operation.

**Radiation Exposure Information**  
The device has been evaluated to meet general RF exposure requirement. The device can be used in portable exposure condition without restriction.

**WARNING Li-Ion Battery Inside**  
This product is fitted with a Li-ion battery. Do not damage, open, or dismantle the battery and do not use it in damp and/or corrosive conditions. Use only with compatible chargers. Never dispose of batteries in a fire, and never expose them to high temperatures. Do not expose the product to temperatures exceeding 60°C (140°F).

### Rating Label

#### Definitions

- Direct current symbol.
- This symbol signifies the product must not be discarded as household waste, and should be delivered to an appropriate collection facility for recycling. Proper disposal and recycling helps protect natural resources, human health and the environment.
- This symbol signifies and declares that this equipment has battery charging which complies with California CEC and energy efficiency.
- This symbol signifies that this is a wireless device powered by Bluetooth® technology.
- This symbol represents FCC Declaration of Conformity and compliance.



## Warranty Information

### 90-Day Limited Warranty

Territory: United States/Canada

#### LIMITED WARRANTY TO ORIGINAL CONSUMER

This product as supplied and distributed new by an authorized retailer is warranted by Southern Telecom, Inc. to the original consumer purchaser against defects in materials and workmanship ("Warranty") as follows:

#### To obtain warranty service:

- Visit our customer support portal [www.customersupport123.com](http://www.customersupport123.com)
- Select the brand and model of your device
- Select "Service Request" and fill out the form to begin your inquiry
- Exchanges require dated proof of purchase from an authorized retailer

Your product will be repaired or replaced, at our option, for the same or similar model of equal value if examination by the service center determines this product is defective. Products received damaged as a result of shipping will require you to file a claim with the carrier.

#### Warranty service not provided

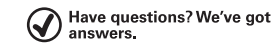
This warranty does not cover damage resulting from accident, misuse, abuse, improper installation or operation, lack of reasonable care, unauthorized modification including software modifications such as the installation of custom firmware. This warranty is voided in the event any unauthorized person opens, alters or repairs this product. All products being returned to the authorized service center for repair must be suitably packaged.

NO WARRANTIES, WHETHER EXPRESS OR IMPLIED, INCLUDING, BUT NOT LIMITED TO, ANY IMPLIED WARRANTIES OF MERCHANTABILITY OR FITNESS FOR A PARTICULAR PURPOSE, OTHER THAN THOSE EXPRESSLY DESCRIBED ABOVE, SHALL APPLY. DISTRIBUTOR FURTHER DISCLAIMS ALL WARRANTIES AFTER THE EXPRESS WARRANTY PERIOD STATED ABOVE. NO OTHER EXPRESS WARRANTY OR GUARANTEE GIVEN BY ANY PERSON, FIRM OR ENTITY WITH RESPECT TO THE PRODUCT SHALL BE BINDING ON DISTRIBUTOR. REPAIR, REPLACEMENT, OR REFUND OF THE ORIGINAL PURCHASE PRICE - AT DISTRIBUTOR'S SOLE DISCRETION - ARE THE EXCLUSIVE REMEDIES OF THE CONSUMER. IN NO EVENT WILL DISTRIBUTOR OR ITS MANUFACTURERS BE LIABLE FOR ANY INCIDENTAL, DIRECT, INDIRECT, SPECIAL, PUNITIVE OR CONSEQUENTIAL DAMAGES (SUCH AS, BUT NOT LIMITED TO, DAMAGES FOR LOSS OF PROFITS, BUSINESS, SAVINGS, DATA OR RECORDS) CAUSED BY THE USE, MISUSE OR INABILITY TO USE THE PRODUCT EXCEPT AS STATED HEREIN. NO OTHER WARRANTIES SHALL APPLY. NOTWITHSTANDING THE FOREGOING, CONSUMER'S RECOVERY AGAINST DISTRIBUTOR SHALL NOT EXCEED THE PURCHASE PRICE OF THE PRODUCT SOLD BY DISTRIBUTOR. THIS WARRANTY SHALL NOT EXTEND TO ANYONE OTHER THAN THE ORIGINAL CONSUMER WHO PURCHASED THE PRODUCT AND IS NOT TRANSFERABLE.

Some countries, states or provinces do not allow the exclusion or limitation of incidental or consequential damages or allow limitations on warranties, so limitation or exclusions may not apply to you. This warranty gives you specific legal rights, and you may have other rights that vary from state to state or province to province. Contact your authorized retailer to determine if another warranty applies.

Printed in China  
v1. 04-2021

## Polaroid



Have questions? We've got answers.

Visit us at [customersupport123.com](http://customersupport123.com)



©2021. All rights reserved.

Polaroid, Polaroid Color Spectrum and Polaroid Classic Border Logo are trademarks of P.L.R.I.P. Holdings, LLC, used under license. P.L.R.I.P. Holdings, LLC, does not manufacture this product or provide any manufacturer's warranty or support.

## Polaroid



**PTWSA10**  
Compact True Wireless Buds  
**User Manual**

## Before You Begin...

### READ THIS MANUAL CAREFULLY AND SAVE FOR FUTURE REFERENCE

#### ⚠Caution

To ensure safe and proper use, read all safety information before using the device. Only use with manufacturer-approved batteries, chargers, accessories, and supplies.

- **THIS DEVICE IS NOT A TOY**, do NOT allow children or pets to use or play with this device.
- Do not disassemble, modify, or repair the device.
- Do not expose to extreme temperatures (heat or cold), open flames, humid, or wet conditions.
- **Do not submerge in water.**
- Low power may cause poor Bluetooth connection or sound distortion.
- Do not overcharge battery.
- If using with a USB adapter, make sure the adapter is not damaged.
- Do not allow the USB port or the connectors of the supplied USB cable to be exposed to dust or water, or to come into contact with any conductive materials such as liquids, metallic powders, etc.
- The earbuds and case contain built-in batteries and should not be disposed of with regular household waste. Please consult the local authorities on the correct way to dispose of this device.

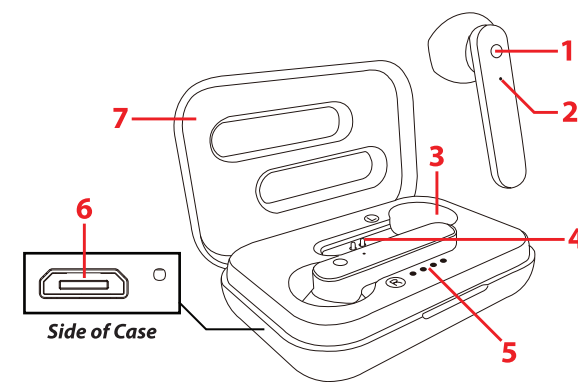
#### Customer Support

For any questions or problems with your product, please visit our website at [customersupport123.com](http://customersupport123.com).

#### In the Box

- PTWSA10 - True Wireless Earbuds (x1)
- Charging Case (x1)
- Micro-USB Charging Cable (x1)
- User Manual (x1)

## Location of Controls



- |                   |                            |                  |
|-------------------|----------------------------|------------------|
| <b>Earbud</b>     | <b>Case</b>                |                  |
| 1. [Multi] Button | 3. Earbud Charging Port    | 6. Charging Port |
| 2. LED Indicator  | 4. Charging Contacts       | 7. Case Lid      |
|                   | 5. Charging LED Indicators |                  |

## Getting Started

### Charging the Case

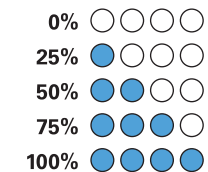
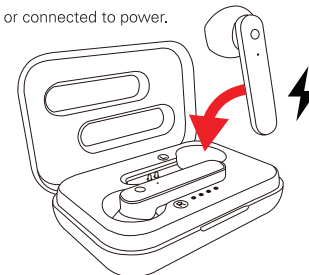
Plug the small connector of the supplied charging cable into the charging port on the charging case. Plug the large connector into a USB power source, such as the USB port on a computer, or plug into a **5V USB adapter** (not included) and plug into a wall socket.

The charging LED indicators on the inside of the case will display the case's current battery level.

### Charging the Earbuds

Use the included charging case to protect and charge the earbuds as described below.

1. Make sure the case is charged up, or connected to power.
2. Open the charging case and insert the earbuds into the earbud charging ports, as shown at right.
3. The LED indicators on the earbuds will **turn RED** while charging, before turning BLUE and then OFF when fully charged. The LED indicators on the inside of the case will show the charging case battery level.



### Powering ON/OFF

- Remove the earbuds from the case to automatically power them ON. Place them into the charging case to automatically power OFF.
- You can also power the earbuds ON/OFF by **pressing + holding** the [Multi] buttons on both earbuds **for 3 seconds** to power ON. Press + hold **for 5 seconds** to power OFF.
- When powered ON, the earbuds will automatically pair to each other and then enter Bluetooth pairing mode. They may automatically re-pair to a previously-paired device in range.

### Bluetooth Pairing

1. Power the earbuds ON. The LED indicators on both earbuds will flash RED and BLUE.
2. After a moment, the earbuds will pair to each other. A voice will be heard, and the LED indicator on the **main earbud** will flash RED and BLUE, and the LED indicator on the **secondary earbud** will turn OFF.
3. Set your mobile device to search for Bluetooth devices. When it appears, select **PTWSA10** from the list of found devices.
4. Once successfully paired to your device, a voice will be heard, and both earbuds' LED indicators will turn OFF.

### Adjusting Volume

- **2x Press** the [Multi] button on the **left** earbud to **increase** volume.
- **2x Press** the [Multi] button on the **right** earbud to **decrease** volume.

### Controlling Playback

- **1x Press** the [Multi] button on either earbud to pause and resume audio playback.
- **Press + hold (2s.)** the [Multi] button on the **left** earbud to skip to the **next** track.
- **Press + hold (2s.)** the [Multi] button on the **right** earbud to skip to the **previous** track.
- **3x Press** the [Multi] button on either earbud to activate Siri® or Voice Assistant if your device has one.

### Phone Calls

- **1x Press** the [Multi] button on either earbud to **answer** an incoming phone call. Press again to **end** the phone call.
- **Press + hold (3s.)** the [Multi] button on either earbud **for 3 seconds** to reject an incoming phone call.
- **4x Press** the [Multi] buttons on **both earbuds at the same time** to redial the last outgoing number.

