

User Manual

PBT9003

(Fold Inward) — — — — — 

(Back Cover)

(Front Cover)

Using the FM Radio

Turn the jukebox ON and switch to the FM radio by long pressing the [PLAY/MODE] button on the side panel of the jukebox or the [MODE] button on the remote. The FM radio LED indicator will turn RED.

- To scan radio stations, press the [PREV] and [NEXT] buttons on the side panel of the jukebox or the [▶▶] and [◀◀] buttons on the remote.
- Quick press the [▶||/M] button on the side panel or the [▶||] button on the remote to autoscans to the next radio station with a clear signal.

For best reception, place the FM antenna where it has a line of clear sight to the sky.

Using Connecting Cables

AUX 1 Input (RCA Cable)

The AUX 1 input is used with an RCA cable. Attach the left (red) and right (white) connectors to the AUX 1 jacks, then attach the other end to your stereo or other media playing device.

Change the speaker's mode to AUX 1 by long pressing the [▶||/M] button on the side panel of the speaker or by pressing the [MODE] button on the remote until the AUX 1 LED indicator turns RED.

See connection diagram and instructions continued on the next page.

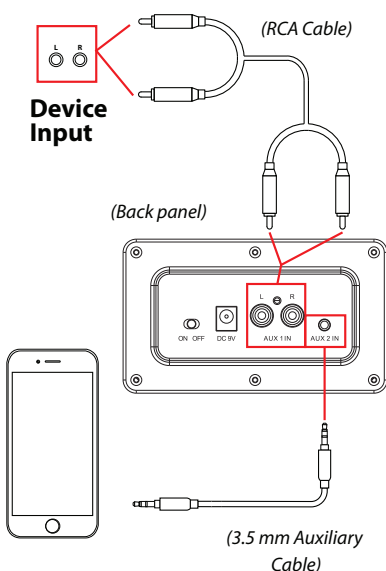
Using Connecting Cables (cont'd)

AUX 2 Input (3.5mm Aux Cable)


The AUX 2 input is used with a 3.5 mm auxiliary cable. Attach the 3.5 mm aux cable to AUX 2 input on the speaker and the other end to the headphone jack on your media playing device.

Change the speaker's mode to AUX 2 by long pressing the [▶||/M] button on the side panel of the speaker or by pressing the [MODE] button on the remote until the AUX 2 LED indicator turns RED.

NOTE: When a device is plugged into either audio input jack, the speaker controls have limited function. You must use your connected device to control music playback.



Polaroid

 **Have questions? We've got answers.**

Visit us at customersupport123.com

 Instantly recognizable. Instantly reassuring. The Polaroid Classic Border and Polaroid Color Spectrum logos let you know you've purchased a product that exemplifies the best qualities of our brand and that contribute to our rich heritage of quality and innovation.

©2021. All rights reserved.

Polaroid, Polaroid Color Spectrum and Polaroid Classic Border Logo are trademarks of PLR IP Holdings, LLC, used under license. PLR IP Holdings LLC, does not manufacture this product or provide any manufacturer's warranty or support.

Polaroid



PBT9003
Wireless Jukebox
User Manual

Before You Begin...

READ CAREFULLY AND KEEP THIS MANUAL

Customer Support

For any questions or problems with your product, please visit our website at customersupport123.com.

⚠ Caution

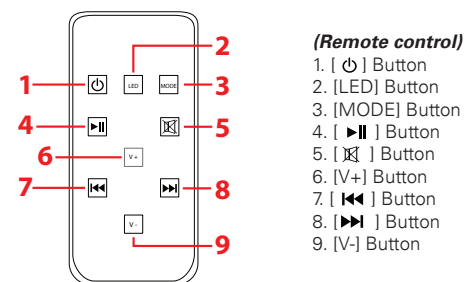
To ensure safe and proper use, read all safety information before using the device. Only use with manufacturer-approved batteries, chargers, accessories, and supplies.

- **THIS DEVICE IS NOT A TOY.** keep away from children and pets.
- Do not disassemble, modify, or repair the device.
- Do not expose to extreme temperatures (heat or cold), open flames, humid, or wet conditions.
- **Do not submerge in water.**
- Do not allow the USB port or the connectors of the supplied adapter to be exposed to dust or water, or to come into contact with any conductive materials such as liquids, metallic powders, etc.

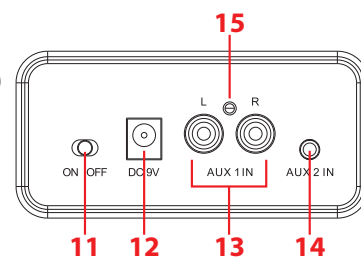
In the Box

- PBT9003 - Wireless Jukebox (x1)
- Remote Control (x1)
- DC 9V Adapter (x1)
- RCA Cable (x1)
- 3.5 mm Auxiliary Cable (x1)
- User Manual (x1)

Location of Controls



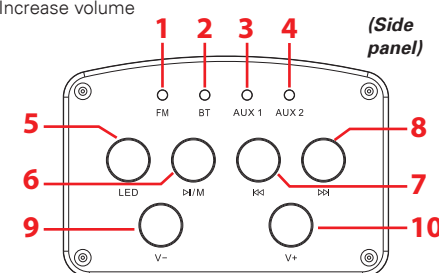
(Back panel of jukebox)



Location of Controls (cont'd)

(Side panel of jukebox)

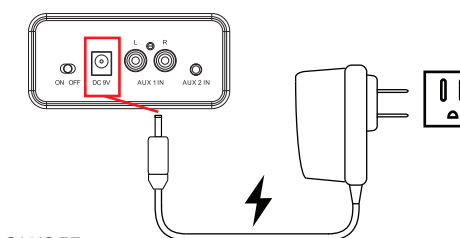
1. FM LED Indicator
2. Bluetooth LED Indicator
3. AUX 1 LED Indicator
4. AUX 2 LED Indicator
5. [LED] Button: Turn LED lights ON/OFF
6. [▶||/M] Button
 - Long Press - Switch input mode
 - Quick Press - Play/pause music
 - Quick Press - Autoscans radio signal (FM radio)
7. [◀] Button: Skip to previous track
8. [▶] Button: Skip to next track
9. [V-] Button: Decrease volume
10. [V+] Button: Increase volume



Getting Started

Setting Up the Jukebox

Plug the small end of the power adapter into the DC 9V power jack on the back panel of the speaker. Plug the other end into the nearest wall outlet.



Powering ON/OFF

- Move the [POWER] switch to the ON position to power the jukebox ON. A tone will be heard and the speaker will enter Bluetooth pairing mode. The speaker will automatically re-pair to any nearby previously paired devices.
- Move the [POWER] switch to the OFF position to power the jukebox OFF.
- Press the [⏻] button on the remote to put the speaker in standby mode.

Bluetooth Pairing

1. Power the jukebox ON. A tone will be heard and the Bluetooth LED indicator will **quickly flash RED**.
2. Set your Bluetooth-enabled device to search for Bluetooth devices. When it appears, select **PBT9003** from the list of found devices.
3. After a successful pairing, a tone will be heard indicating that Bluetooth is connected and the Bluetooth LED indicator will **slowly flash RED**.