

# User Manual

PBT9004

(Fold Inward) - - - - ▶

(Back Cover)

(Front Cover)

## Compliance Information

### FCC Information

This device complies with Part 15 of the FCC Rules.

**Caution:** Any changes or modifications not expressly approved could void the user's authority to operate the equipment.

**Note:** This equipment has been tested and found to comply with the limits for a Class B digital device, pursuant to part 15 of the FCC Rules. These limits are designed to provide reasonable protection against harmful interference in a residential installation. This equipment generates, uses and can radiate radio frequency energy and, if not installed and used in accordance with the instructions, may cause harmful interference to radio communications. However, there is no guarantee that interference will not occur in a particular installation. If this equipment does cause harmful interference to radio or television reception, which can be determined by turning the equipment off and on, the user is encouraged to try to correct the interference by one or more of the following measures:

- Reorient or relocate the receiving antenna.
- Increase the separation between the equipment and receiver.
- Connect the equipment into an outlet on a circuit different from that to which the receiver is connected.
- Consult the dealer or an experienced radio/TV technician for help.

This device complies with Part 15 of the FCC Rules. Operation is subject to the following two conditions: (1) This device may not cause harmful interference, and (2) this device must accept any interference received, including interference that may cause undesired operation.

### Radiation Exposure Information

The device has been evaluated to meet general RF exposure requirement. The device can be used in portable exposure condition without restriction.

### Rating Label

#### Definitions

— Direct current symbol.

 This symbol signifies that this is a wireless device powered by Bluetooth® technology.

 This symbol represents FCC Declaration of Conformity and compliance.

## Warranty Information

### 90-day Limited Warranty

Territory: United States/Canada

#### LIMITED WARRANTY TO ORIGINAL CONSUMER

This product (including any accessories included in the original packaging) as supplied and distributed new by an authorized retailer is warranted by Southern Telecom, Inc. to the original consumer purchaser against defects in materials and workmanship ("Warranty") as follows:

#### To obtain warranty service:

- Visit our customer support portal: [www.customersupport123.com](http://www.customersupport123.com)
- Select the brand and model of your device
- Select "Service Request" and fill out the form to begin your inquiry
- Exchanges require dated proof of purchase from an authorized retailer

Your product will be repaired or replaced, at our option, for the same or similar model of equal value if examination by the service center determines this product is defective. Products received damaged as a result of shipping will require you to file a claim with the carrier.

#### Warranty service not provided


This warranty does not cover damage resulting from accident, misuse, abuse, improper installation or operation, lack of reasonable care, unauthorized modification including software modifications such as the installation of custom firmware. This warranty is voided in the event any unauthorized person opens, alters or repairs this product. All products being returned to the authorized service center for repair must be suitably packaged.

NO WARRANTIES, WHETHER EXPRESS OR IMPLIED, INCLUDING, BUT NOT LIMITED TO, ANY IMPLIED WARRANTIES OF MERCHANTABILITY OR FITNESS FOR A PARTICULAR PURPOSE, OTHER THAN THOSE EXPRESSLY DESCRIBED ABOVE SHALL APPLY. DISTRIBUTOR FURTHER DISCLAIMS ALL WARRANTIES AFTER THE EXPRESS WARRANTY PERIOD STATED ABOVE. NO OTHER EXPRESS WARRANTY OR GUARANTY GIVEN BY ANY PERSON, FIRM OR ENTITY WITH RESPECT TO THE PRODUCT SHALL BE BINDING ON DISTRIBUTOR, REPAIR, REPLACEMENT, OR REFUND OF THE ORIGINAL PURCHASE PRICE - AT DISTRIBUTOR'S SOLE DISCRETION - ARE THE EXCLUSIVE REMEDIES OF THE CONSUMER. IN NO EVENT WILL DISTRIBUTOR OR ITS MANUFACTURERS BE LIABLE FOR ANY INCIDENTAL, DIRECT, INDIRECT, SPECIAL, PUNITIVE OR CONSEQUENTIAL DAMAGES SUCH AS, BUT NOT LIMITED TO, DAMAGES FOR LOSS OF PROFITS, BUSINESS, SAVINGS, DATA OR RECORDS CAUSED BY THE USE, MISUSE OR INABILITY TO USE THE PRODUCT. EXCEPT AS STATED HEREIN, NO OTHER WARRANTIES SHALL APPLY. NOTWITHSTANDING THE FOREGOING, CONSUMER'S RECOVERY AGAINST DISTRIBUTOR SHALL NOT EXCEED THE PURCHASE PRICE OF THE PRODUCT SOLD BY DISTRIBUTOR. THIS WARRANTY SHALL NOT EXTEND TO ANYONE OTHER THAN THE ORIGINAL CONSUMER WHO PURCHASED THE PRODUCT AND IS NOT TRANSFERABLE.

Some countries, states or provinces do not allow the exclusion or limitation of incidental or consequential damages or allow limitations on warranties, so limitation or exclusions may not apply to you. This warranty gives you specific legal rights, and you may have other rights that vary from state to state or province to province. Contact your authorized retailer to determine if another warranty applies.

Designed in US  
Printed in China  
v2. 05-2021

# Polaroid

 **Have questions? We've got answers.**

Visit us at [customersupport123.com](http://customersupport123.com)

 Instantly recognizable. Instantly reassuring. The Polaroid Classic Border and Polaroid Color Spectrum logos let you know you've purchased a product that exemplifies the best qualities of our brand and that contributes to our rich heritage of quality and innovation.

©2021. All rights reserved.

Polaroid, Polaroid Color Spectrum and Polaroid Classic Border Logo are trademarks of P.L.R. IP Holdings, LLC, used under license. P.L.R. IP Holdings, LLC, does not manufacture this product or provide any manufacturer's warranty or support.

# Polaroid



**PBT9004**  
Wireless Juke Box & Record Player  
User Manual

## Before You Begin...

### READ CAREFULLY AND KEEP THIS MANUAL

#### Customer Support

For any questions or problems with your product, please visit our website at [customersupport123.com](http://customersupport123.com).

#### ⚠ Caution

To ensure safe and proper use, read all safety information before using the device. Only use with manufacturer-approved batteries, chargers, accessories, and supplies.

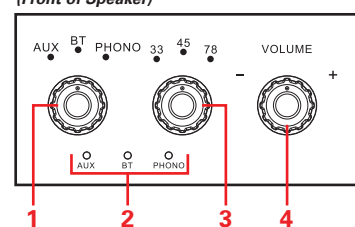
- **THIS DEVICE IS NOT A TOY.** Keep away from children and pets.
- Do not disassemble, modify, or repair the device.
- Do not expose to extreme temperatures (heat or cold), open flames, humid, or wet conditions.
- **Do not submerge in water.**
- Do not allow the ports or connectors of the product or power adapter to be exposed to dust or water, or to come into contact with any conductive materials such as liquids, metallic powders, etc.

#### In the Box

- PBT9004 - **Wireless Speaker** (x1)
- Power Adapter (x1)
- 3.5 mm - RCA Auxiliary Cable (x1)
- Turntable Lock (x1)

## Location of Controls

### (Front of Speaker)



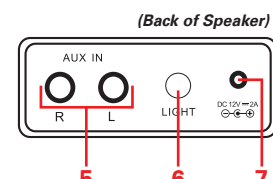
PBT9004

### (Front of Speaker - Control Panel)

1. [MODE] Dial: Change input mode (Auxiliary, Bluetooth, Phono inputs)
2. LED Indicators
  - AUX - 3.5mm Auxiliary Input
  - BT - Bluetooth Input
  - PHONO - Turntable Input
3. [RPM] Dial: Change the turntable speed to a 33/45/78 RPM
4. [VOL] Dial: Adjust volume of speaker

### (Back of Speaker - Input Panel)

5. L - R Auxiliary Input Jacks
6. [LIGHT] Button: Cycle through light modes
7. DC 12V/2A Power Jack



## Getting Started

### Powering the Speaker

Plug the pin of the supplied AC power adapter into the power jack on the back of the speaker. Plug the adapter into a wall socket.

- Press the main power switch on the back of the jukebox to power ON/OFF.

### Changing Input Modes

- Use the [MODE] dial to change speaker input modes (Auxiliary, Bluetooth, and Phono inputs). The LED indicator will indicate the speaker's current mode.

### Adjusting Volume

- Use the [VOL] dial to adjust the volume of the speaker.

### Using the Lights

- Press the [LIGHT] button to turn the speaker lights ON, and to cycle through the light modes.
- Continue to press the [LIGHT] button until the lights turn off.

### Pairing the Speaker (Bluetooth)

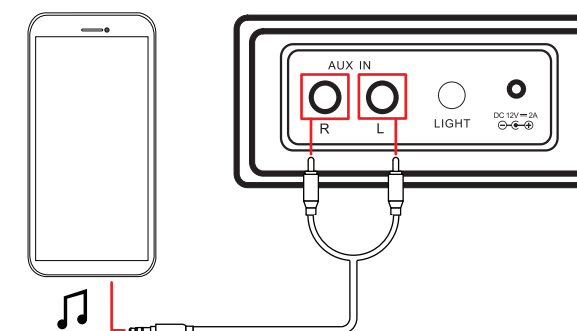
1. Power the speaker ON. Turn the [MODE] dial to the BT position, the BT LED indicator will flash. (**NOTE:** If a previously paired device is in range when the speaker is turned on, the speaker may connect to it automatically.)
2. Set your mobile device to search for Bluetooth devices. When it appears, select **PBT9004** from the list of found devices.
3. After a successful pairing, a tone will be heard indicating that Bluetooth is connected, and the BT LED indicator will stay solid.

In Bluetooth mode, playback is controlled through your paired device. Volume can be adjusted with the [VOL] dial, or through the controls on your paired device.

### Using with a Wired Device (Auxiliary)

1. Plug the red connector of the supplied 3.5 mm - RCA cable into the auxiliary input jack labeled "R" on the input panel on the back of the speaker.
2. Plug the white connector of the supplied 3.5 mm - RCA cable to the auxiliary input jack labeled "L" on the input panel on the back of the speaker.
3. Plug the cable's 3.5 mm connector into the headphone jack or audio output port on your media-playing device.
4. Turn the [MODE] dial to the AUX position. The AUX LED indicator will turn on.

In AUX mode, playback is controlled through your connected device. Volume can be adjusted with the [VOL] dial, or through the controls on your connected device.



### Playing Vinyl Records (Phono)

1. Turn the [MODE] dial to the PHONO position. The PHONO LED indicator will turn on.
2. Carefully place your record on the platter with the central spindle inserted through the center of the record. **While still holding the record in place,** place the magnetic turntable lock over the record.
3. Turn the [RPM] dial to the position corresponding to the size of the record you are going to play. **NOTE:** Once playing, if the record sounds like it is playing too fast or slow, the [RPM] dial is not on the correct setting.
4. Gently place the tone arm onto the record. The platter will start to spin and music will play.

### Phono Operation

- To manually stop the record, gently lift the tone arm.
- To resume the record, gently move the tone arm to the spot on the record you would like to play from.
- When the record is finished, the platter will stop spinning. You will need to move the needle arm back to its resting place by hand.
- Use the [RPM] Dial to change the speed of the platter.

**CAUTION:** Do NOT attempt to manually stop the platter from spinning. Do not exert excessive force on the record with the tone arm. This can cause damage to both the needle AND the record.