

smarttab®

2-IN-1 10.1" TABLET/NOTEBOOK

10.1" TOUCH-DISPLAY

STW1050



Windows 10



SAFETY PRECAUTIONS

- During charging, keep your device and adapter near room temperature for efficient battery charging.
- New batteries are not fully charged.
- New batteries or batteries stored for a long time may take more time to charge.
- The included adapter is intended for indoor use only.
- Service should only be provided by an authorized service provider.
- Never attempt to disassemble, repair or modify the device yourself.
- Do not use the device in rain or other wet locations.
- Avoid spilling any liquid on the device.
- In case the device gets wet, unplug all cables and turn off the device.
- Do not attempt to dry the device with an external heat source.
- Unplug all cables and turn off the device before cleaning.
- Use a soft, lint-free cloth to clean the device and display.
- Avoid getting moisture in open ports.
- Do not use household cleaners, solvents, alcohol, or abrasives to clean the device.
- Routinely check the device for proper and safe conditions. If there is any damage, or broken parts, remove the device from use.
- If for any reason the screen (display) is fractured or cracked, immediately remove this product from use and contact Customer Support.
- It is rare but possible for screens to be triggered by light flashes or patterns such as those on device or TV screens. To reduce exposure to this potential hazard, play/watch in a well-lit room, sit an appropriate distance from the screen and take 10 to 15-minute breaks every hour.
- Cords could be a strangulation hazard.
- Keep out of reach of children under 3 years of age.
- Children pulling on the cord could cause the device or other equipment to which the device is connected to fall with possibility of property damage, serious injury, or death. Adult supervision required during use.
- Long-term exposure to loud sounds, at high volume, may result in permanent hearing loss.
- When using headphones or earbuds, it is recommended that the product is listened to at lower volumes for shorter periods of time. Set the volume while in a quiet environment; turn the volume down if you cannot hear the people speaking near you.
- Limit the listening time to 90 minutes, followed by a quiet period. The louder the volume, the less time required before your hearing may be affected.
- If you experience ringing in your ears or hear muffled speech, stop listening and have your hearing checked.

WARNING: TO REDUCE THE RISK OF FIRE OR ELECTRICAL SHOCK, DO NOT EXPOSE THIS PRODUCT TO RAIN OR MOISTURE.



The lightning flash with arrowhead symbol, within an equilateral triangle, is intended to alert the user to the presence of uninsulated "dangerous voltage" within the product's enclosure that may be of sufficient magnitude to constitute a risk of electric shock to persons.

WARNING
RISK OF ELECTRIC SHOCK DO NOT OPEN

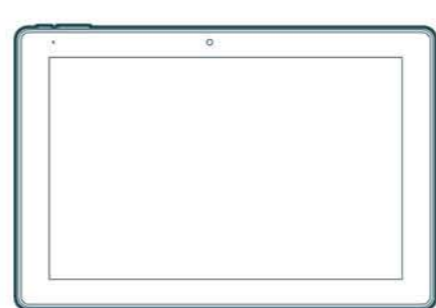
WARNING: To reduce the risk of electric shock, do not remove cover (or back).

No user serviceable parts inside. Refer servicing to qualified service personnel.

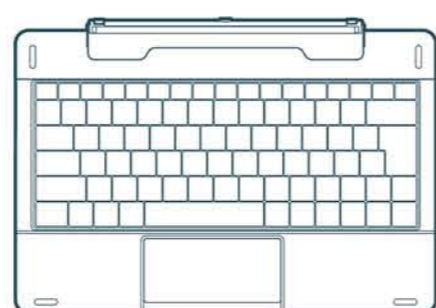


The exclamation point within the equilateral triangle is intended to alert the user to the presence of important operating and maintenance (servicing) instructions in the literature accompanying the product.

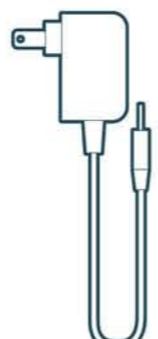
IN THE BOX



10.1" tablet



Keyboard

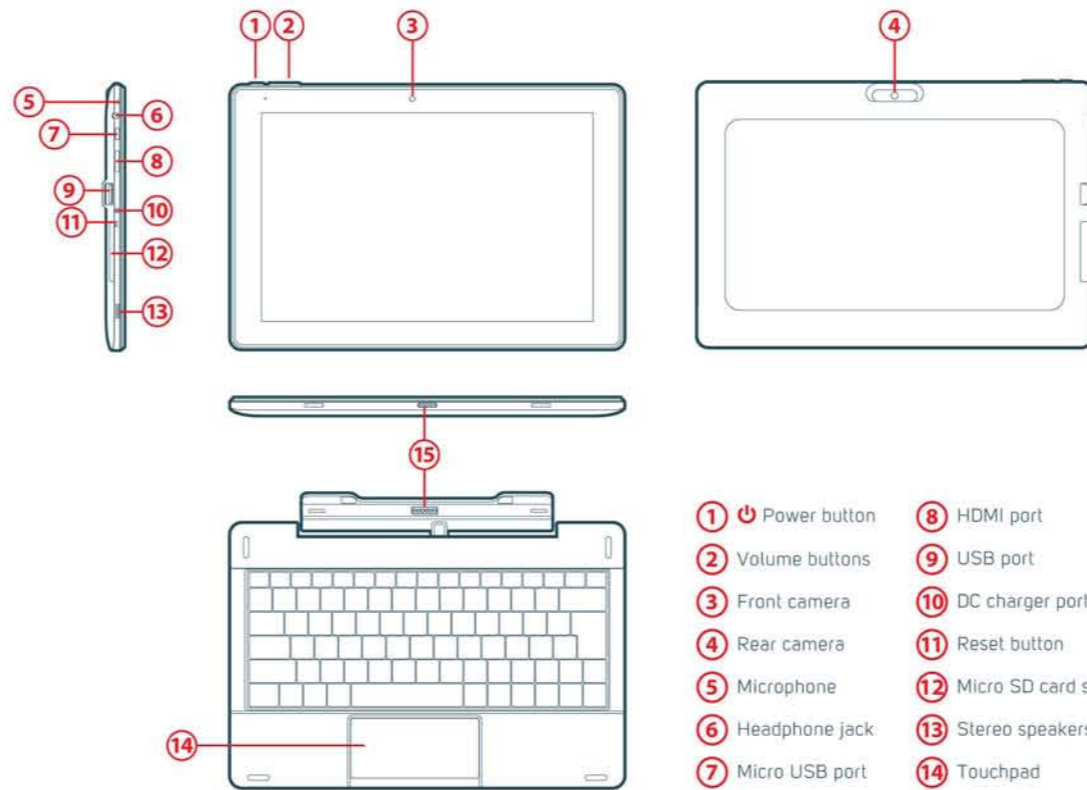


Charger



User guide

FEATURES



- 1 Power button
- 2 Volume buttons
- 3 Front camera
- 4 Rear camera
- 5 Microphone
- 6 Headphone jack
- 7 Micro USB port
- 8 HDMI port
- 9 USB port
- 10 DC charger port
- 11 Reset button
- 12 Micro SD card slot
- 13 Stereo speakers
- 14 Touchpad
- 15 Pogo pins

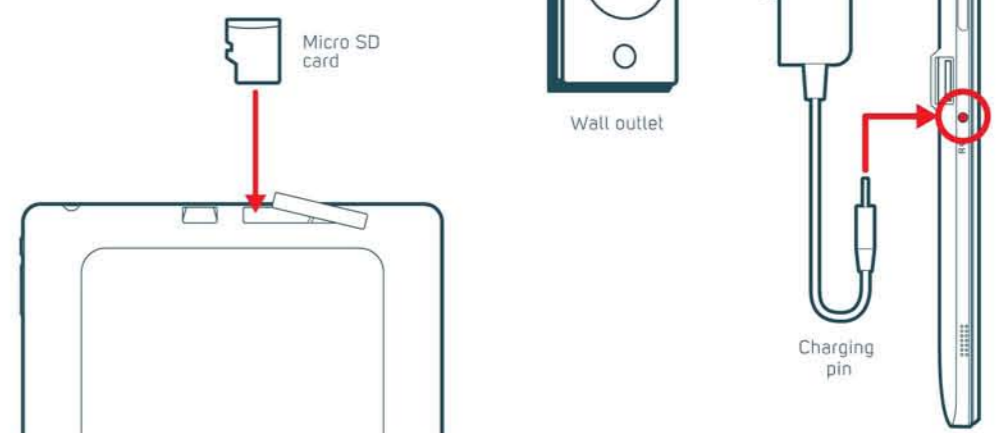
- Specifications:**
- 10.1" IPS display (800 x 1280)
 - 64-bit, Intel quad-core processor
 - 2GB RAM
 - 32GB internal storage*
 - MicroSD card slot
 - 5,800 mAh Li-Ion battery
 - Stereo speakers
 - HD, front/rear cameras
 - Wi-Fi 802.11b/g/n
 - Bluetooth 4.0
 - Full-size USB 3.0 port (Fits standard USB memory sticks)
 - Mini HDMI port

*Actual internal memory may vary depending on the operating system of the device and the preloaded apps.

EXPANDING THE STORAGE

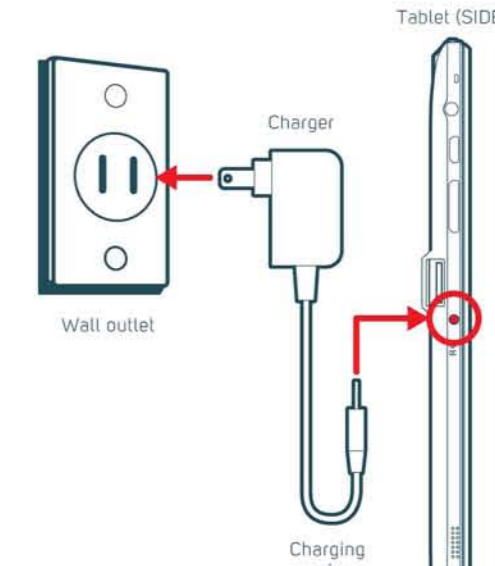
Inserting a Micro SD card
To install a Micro SD card into the tablet, gently open the cover and carefully insert the card as shown below into the card slot until it clicks and locks into place.

To remove the Micro SD card, gently press it inward to eject.



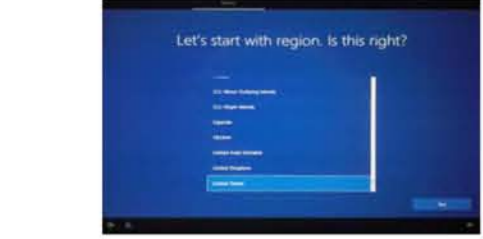
CHARGING

Connect the notebook to a wall outlet using the included power adapter as shown below.



COMPLETING INITIAL SETUP

This guide is designed to get you up and running with Windows 10. Please follow the instructions below:



1. Choose your country/region, keyboard layout, and time zone.
2. If you would like to add an additional keyboard select "Add layout", if not select Skip.
3. Agree to Microsoft's legal terms by selecting Accept.

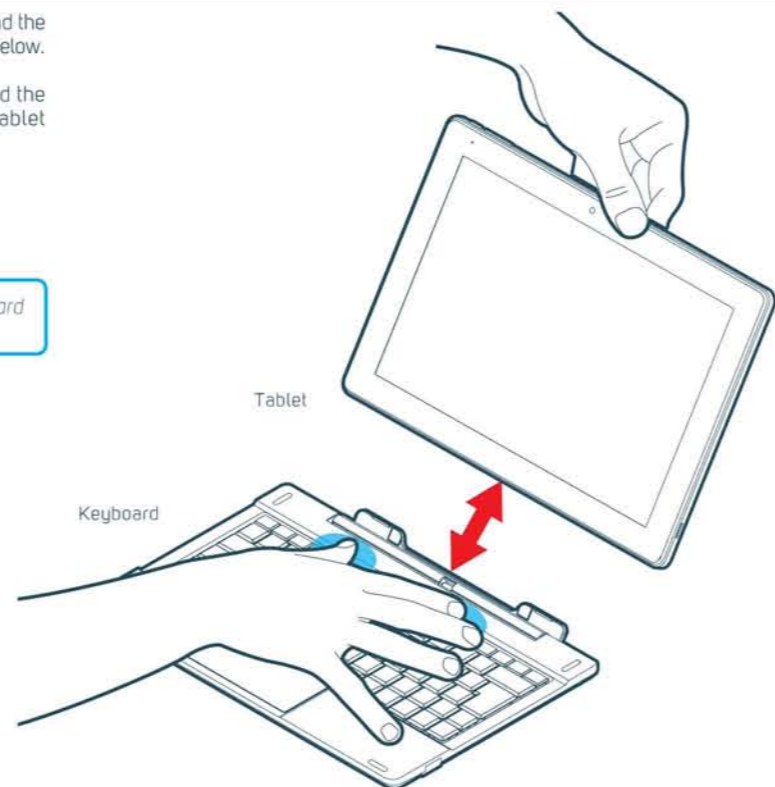


4. Connect to your Wi-Fi network.

KEYBOARD DOCK

- To dock the tablet to the keyboard, align the tablet and the keyboard, then slide the tablet into the dock as shown below.
- To undock the tablet from the keyboard, firmly hold the keyboard as shown below, then gently pull the tablet upwards.

The tablet will automatically recognize the keyboard when docked properly.



IMPORTANT

The touchpad does not have a mechanical click. Tap to select.



Correct
Tap the touchpad to select



Incorrect
Don't push down on the touchpad

LEGAL INFORMATION

Windows 10 Text-To-Speech Support with Narrator
Narrator lets you use your PC without a display or mouse to complete common tasks if you're blind or have low vision. It reads text on your PC screen aloud and interacts with things on the screen, like text and buttons, and describes events, such as notifications or calendar appointments. Use Narrator to read and write email, browse the Internet, and work with documents.

To start or stop Narrator, press the **Windows logo key + Ctrl + Enter**. To see all Narrator commands, press **Caps Lock + F1** after you open Narrator. If your device has a touchscreen, tap it three times with four fingers.

For more information regarding TTS, please go to: www.southern telecom.com/ts_tabletsupport.html

FCC Part 15:
This equipment has been tested and found to comply with the requirements for a Class B digital device under Part 15 of the Federal Communications Commission (FCC) rules. These requirements are intended to provide reasonable protection against harmful interference in a residential installation. This equipment generates, uses and can radiate radio frequency energy and, if not installed and used in accordance with the instructions, may cause harmful interference to radio communications. However, there is no guarantee that interference will not occur in a particular installation. If this equipment does cause harmful interference to radio or television reception, which can be determined by turning the equipment off and on, the user is encouraged to try to correct the interference by one or more of the following measures:

- Re-orient or relocate the receiving antenna.
- Increase the separation between the equipment and receiver.
- Connect the equipment into an outlet on a circuit different from that to which the receiver is connected.
- Consult the dealer or an experienced radio/TV technician for help.

Do not attempt to repair or modify this equipment. Warning:
Changes or modifications to this equipment not expressly approved by the party responsible for compliance could void the user's authority to operate the equipment.

"This device complies with Part 15 of the FCC Rules. Operation is subject to the following two conditions:
(1) this device may not cause harmful interference, and
(2) this device must accept any interference received, including interference that may cause undesired operation."

Shielded USB cables must be used with this unit to ensure compliance with the Class B FCC limits.

Information Regarding Exposure to Radio Frequency Energy
Your device is designed and manufactured not to exceed the emission limits for exposure to RF energy set by the Federal Communications Commission of the United States (FCC). Information on your device is on file with the FCC and can be found under the Display Grant section of <http://www.fcc.gov/oet/ea/> after searching on the FCC ID for your device, which can be found on the back of the device.
If your electronic device has internal memory on which personal or other confidential

data may be stored, you may want to perform a data sanitization process before you dispose of your device to ensure another party cannot access your personal data. Data sanitization varies by the type of product and its software, and you may want to research the best sanitization process for your device before disposal. You may also check with your local recycling facility to determine their data sanitization procedures during the recycling process.

Battery Disposal & Recycle
This device contains a Lithium-Ion battery. The battery must be recycled or disposed of properly. Contact your local waste management office for information on battery recycling or disposal.

1-800-822-8837

Designed and distributed by Southern Telecom Inc. 6501 1st Avenue Brooklyn, NY 11220 © 2017 All Rights Reserved. Made in China.

SmaTab is a registered trademark of Southern Telecom Inc.

Intel, Intel Logo, Intel Atom, Intel Inside, Intel Inside Logo, are trademarks of Intel Corporation in the U.S. and/or other countries.

The Bluetooth word mark and logos are owned by the Bluetooth SIG, Inc. All other trademarks and trade names are those of their respective owners.

LIMITED WARRANTY

LIMITED WARRANTY TO ORIGINAL CONSUMER
This Product (including any accessories included in the original packaging) as supplied and distributed new by an authorized retailer is warranted by Southern Telecom, Inc. to the original consumer purchaser against defects in materials and workmanship ("Warranty") as follows:

Product Type: Tablet, Territory : United States / Canada, Parts Warranty : 1 Year, Labor Warranty : 1 Year.

- To obtain warranty service:**
- Call the Customer Support number located below, or go to our website portal to receive an SRQ number.
 - Provide proof of the date of purchase within the package (dated bill of sale).
 - Prepay all shipping costs to the authorized service center, and remember to insure your return.
 - Include a return shipping address (no P.O. Boxes), a telephone contact number, and the defective unit within the package.
 - Describe the defect or reason you are returning the product.

Customer Support:
1-(888)-620-6695 (Toll Free) Monday - Friday: 8AM - 10PM (EST)
www.southern telecom.com Click on "Product Support"

Your product will be repaired or replaced, at our option, for the same or similar model of equal value if examination by the service center determines this product is defective. Products received damaged as a result of shipping will require you to file a claim with the carrier.

The shipping address of the authorized service center is:
Customer Service Dept. 36
c/o Southern Telecom
400 Kennedy Drive
Sagreville NJ 08972

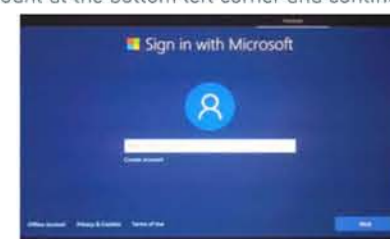
Warranty service not provided
This warranty does not cover damage resulting from accident, misuse, abuse, improper installation or operation, lack of reasonable care, unauthorized modification including software modifications such as the installation of custom firmwares. This warranty is voided in the event any unauthorized person opens,

alters or repairs this product. All products being returned to the authorized service center for repair must be suitably packaged.

NO WARRANTIES, WHETHER EXPRESS OR IMPLIED, INCLUDING, BUT NOT LIMITED TO, ANY IMPLIED WARRANTIES OF MERCHANTABILITY OR FITNESS FOR A PARTICULAR PURPOSE, OTHER THAN THOSE EXPRESSLY DESCRIBED ABOVE SHALL APPLY. DISTRIBUTOR FURTHER DISCLAIMS ALL WARRANTIES AFTER THE EXPRESS WARRANTY PERIOD STATED ABOVE. NO OTHER EXPRESS WARRANTY OR GUARANTEE GIVEN BY ANY PERSON, FIRM OR ENTITY WITH RESPECT TO THE PRODUCT SHALL BE BINDING ON DISTRIBUTOR. REPAIR, REPLACEMENT, OR REFUND OF THE ORIGINAL PURCHASE PRICE - AT DISTRIBUTOR'S SOLE DISCRETION - ARE THE EXCLUSIVE REMEDIES OF THE CONSUMER. IN NO EVENT WILL DISTRIBUTOR OR ITS MANUFACTURERS BE LIABLE FOR ANY INCIDENTAL, DIRECT, INDIRECT, SPECIAL, PUNITIVE OR CONSEQUENTIAL DAMAGES (SUCH AS, BUT NOT LIMITED TO, DAMAGES FOR LOSS OF PROFITS, BUSINESS, SAVINGS, DATA OR RECORDS) CAUSED BY THE USE, MISUSE OR INABILITY TO USE THE PRODUCT, EXCEPT AS STATED HEREIN. NO OTHER WARRANTIES SHALL APPLY. NOTWITHSTANDING THE FOREGOING, CONSUMER'S RECOVERY AGAINST DISTRIBUTOR SHALL NOT EXCEED THE PURCHASE PRICE OF THE PRODUCT SOLD BY DISTRIBUTOR. THIS WARRANTY SHALL NOT EXTEND TO ANYONE OTHER THAN THE ORIGINAL CONSUMER WHO PURCHASED THE PRODUCT AND IS NOT TRANSFERABLE.

Some countries, states or provinces do not allow the exclusion or limitation of incidental or consequential damages or allow limitations on warranties, so limitation or exclusions may not apply to you. This warranty gives you specific legal rights, and you may have other rights that vary from state to state or province to province. Contact your authorized retailer to determine if another warranty applies.

5. If you have a Microsoft account, please sign in for enhanced security, cloud storage on OneDrive, HD video calls with Skype, and more. If you don't, you can select Offline account at the bottom left corner and continue.



6. Create your Windows user account and password then select Next.
7. If you would like to use Cortana as your personal assistant select Yes.



8. Choose your privacy settings. The default settings are recommended by Microsoft, review them and select Accept to finish.



Tap to see all the pre-installed apps.

In tablet mode, you can bring up the virtual keyboard by tapping the icon on the lower right-hand corner of your screen.