

M10500-X: User Guide

10/11/2018

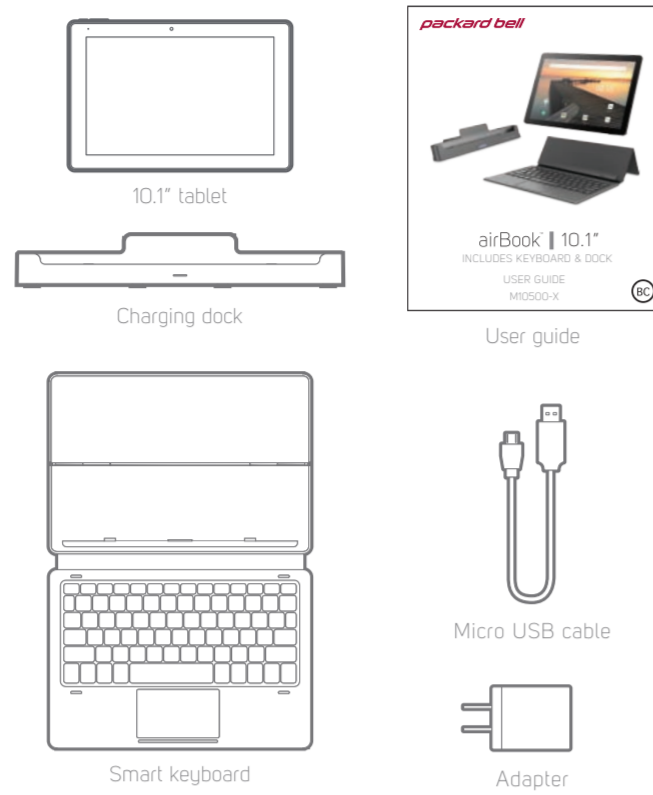


airBook™ | 10.1"
INCLUDES KEYBOARD & DOCK

USER GUIDE
M10500-X



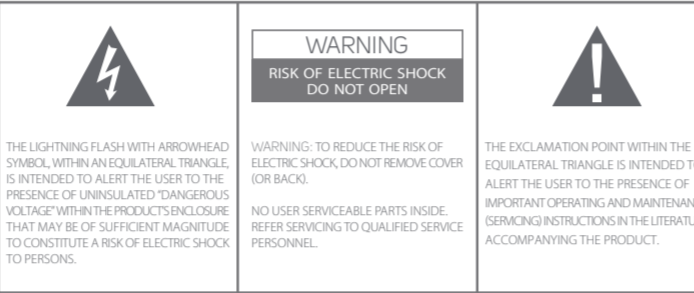
In the box



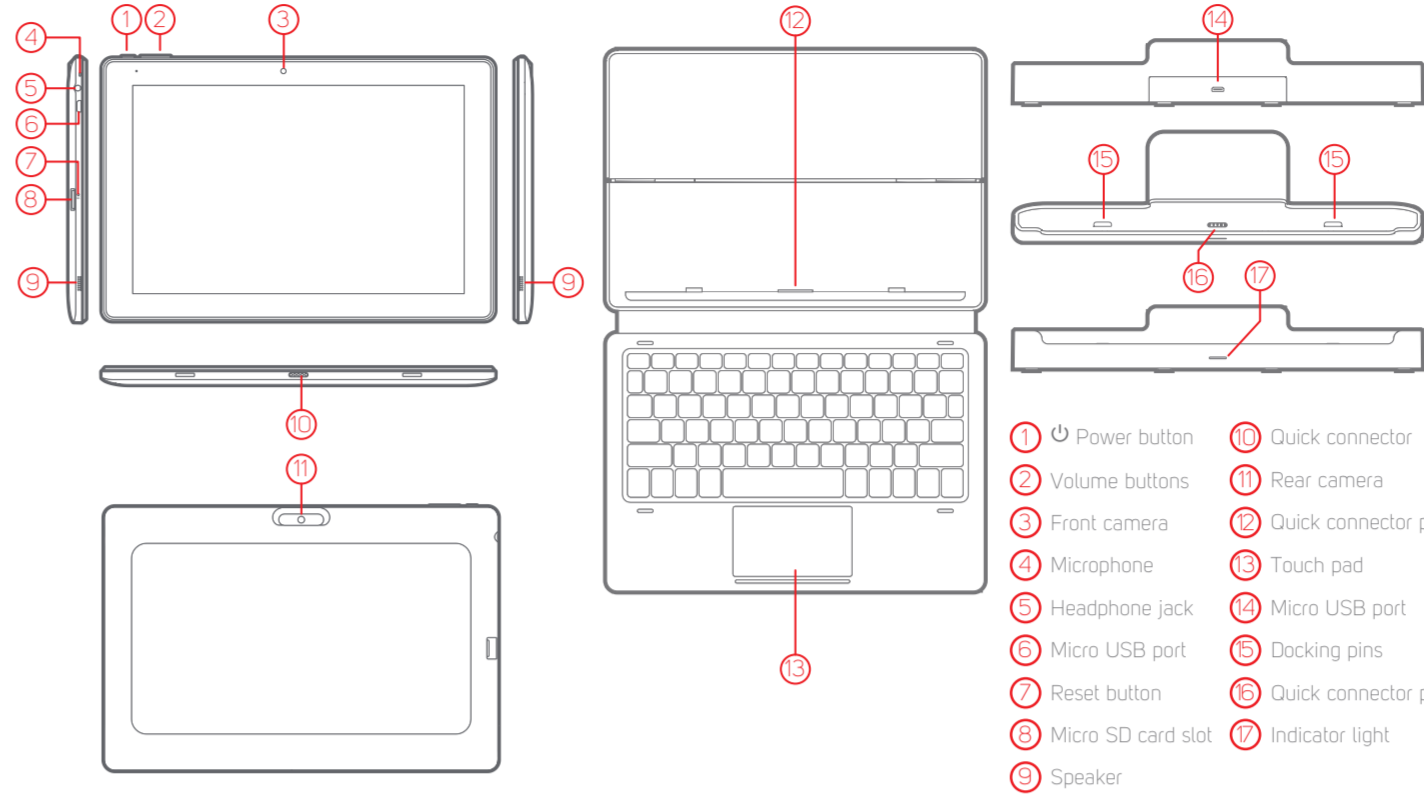
Care & safety precautions

- During charging, keep your device and adapter near room temperature for efficient battery charging.
- Never fall asleep or not stay charged.
- Never fall asleep or not stay charged for a long time may take more time to charge.
- The included adapter is intended for indoor use only.
- Do not use the tablet in rain or other wet locations.
- Never attempt to disassemble, repair or modify the tablet yourself.
- Do not use the tablet in rain or other wet locations.
- Avoid spilling any liquid on the tablet.
- Do not use the tablet with any external heat source.
- Do not attempt to dry the tablet with an external heat source.
- Do not use the tablet with any external heat source.
- Use a soft, lint free cloth to clean the tablet and display.
- Avoid getting moisture on open ports.
- Do not use household cleaners, solvents, alcohol, or abrasives to clean the tablet.
- If any liquid is spilled on the tablet or dock, immediately remove the product from use and contact Customer Support.
- If any liquid is spilled on the tablet or dock, immediately remove the product from use and contact Customer Support.
- It is not possible for users to be triggered by light flashes or patterns such as those on computer or TV screens. To be exposed to this pattern, users must be within 18 inches (45.7 cm) of the screen at an appropriate distance from the screen and use 10- to 15-minute breaks every hour.
- Children pulling on the cord could cause the computer monitor or other equipment to which the device is connected to fall with possibility of property damage, serious injury or death. Adult supervision required during use.
- Long-term exposure to loud sounds, at high volume, may result in permanent hearing loss.
- When using headphones or earbuds, it is recommended that the product is listened to at lower volumes for shorter periods of time. Set the volume while in a quiet environment, turn the volume down if you cannot hear the people speaking near you. Limit the listening time to 30 minutes, followed by a quiet period. The louder the volume, the less time required before your hearing may be affected.
- If you experience ringing in your ears or hear muffled speech, stop listening and have your hearing checked.

WARNING: TO REDUCE THE RISK OF FIRE OR ELECTRICAL SHOCK, DO NOT EXPOSE THIS PRODUCT TO RAIN OR MOISTURE.



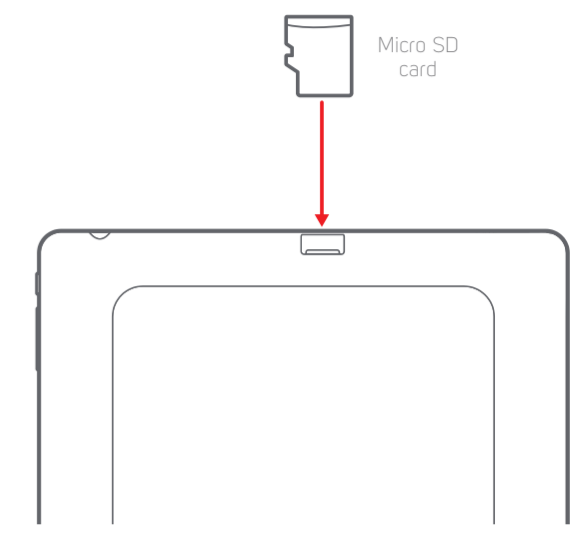
Buttons, ports & hardware



Expanding the storage

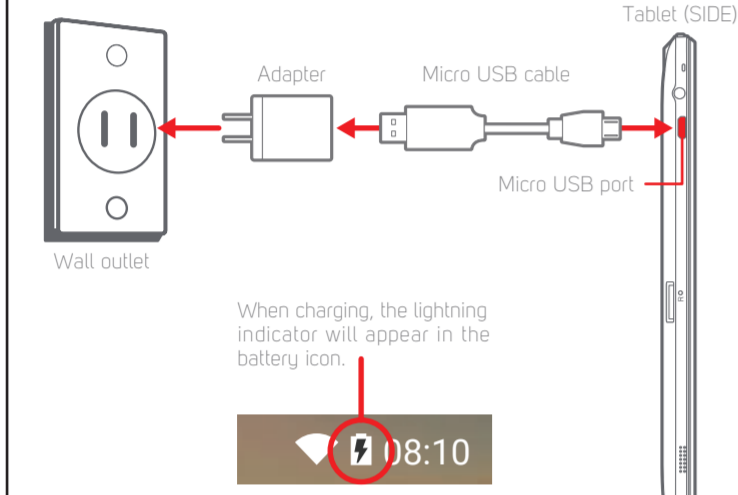
Inserting a Micro SD card
To install a Micro SD card into the tablet, carefully insert the card as shown below into the card slot until it clicks and locks into place.

To remove the Micro SD card, gently press it inward to eject.



Charging

Connect the tablet to a wall outlet using the included adapter as shown below.



When charging, the lightning indicator will appear in the battery icon.

- Battery Tips:**
- Turn off Wi-Fi when it's not in use.
 - Lock the tablet (turning the display off) to shorten charging time.
 - To optimize battery time and performance, adjust the "Brightness" and "Screen timeout" options in the Settings panel.
 - It is recommended to keep the brightness level at 50% or under if the tablet is in use while charging.

Power ON / OFF & Reset

Turning on the tablet
Press & hold the Power button until the startup screen appears.

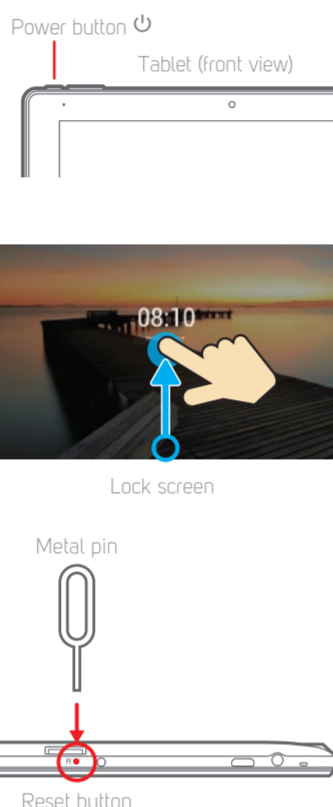
Power off the tablet
Press & hold the Power button until the "Power off" option appears.

Briefly press the Power button. (Lock the tablet to conserve the battery).
Unlock the tablet
Briefly press the Power button, and slide the "Lock icon" up.

Resetting the tablet
If the tablet malfunctions or freezes, you can use the reset button to restart it.

To reset the tablet, take a metal pin (such as the end of a paper clip) and gently push the recessed reset button on the side of the tablet as shown below.

The tablet will restart.



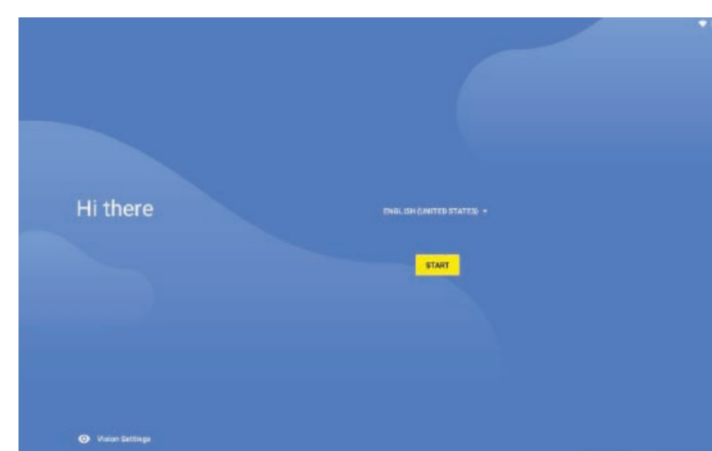
Turning on

1 Press and hold the Power button to get started.



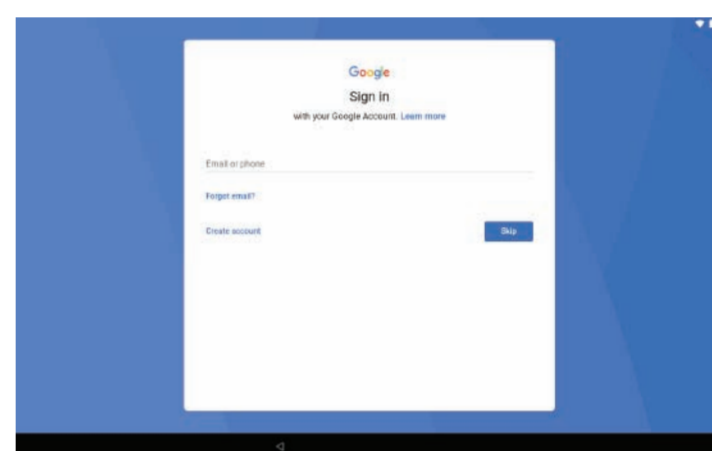
Startup screen

2 Follow the initial setup wizard prompts.



Setup wizard

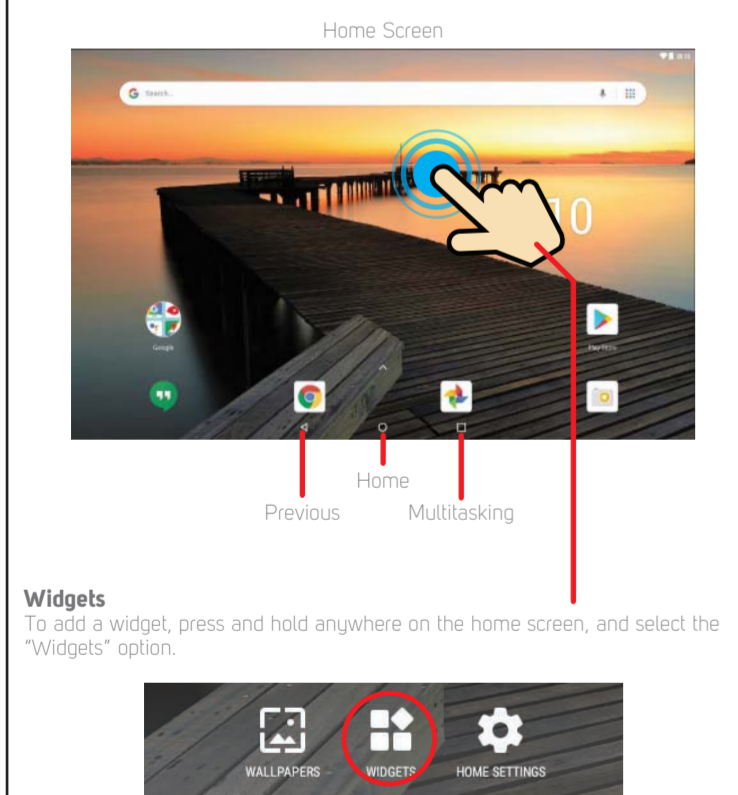
3 To use the Google Play store, sign in or create a Google account.



Google account

If you use Gmail, you already have a Google account —if not, you can create an account now.

Home Screen

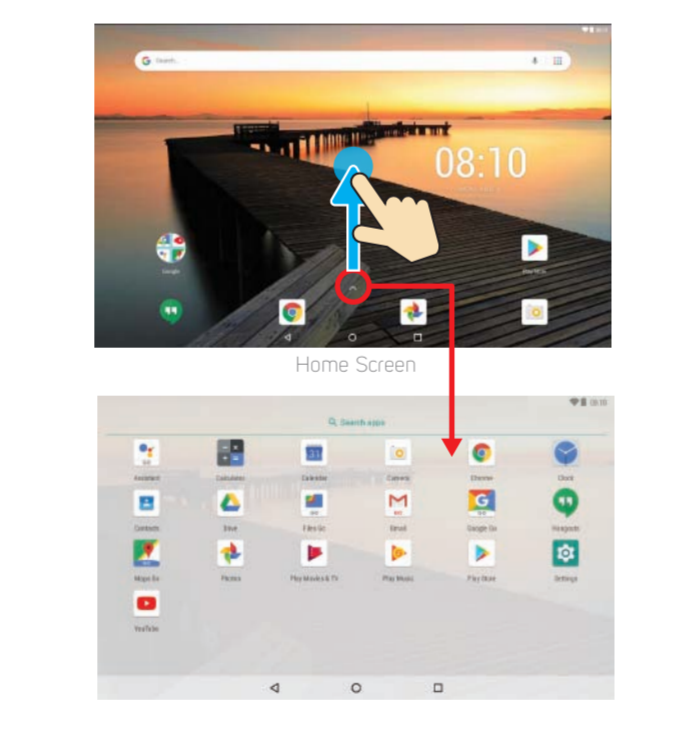


Widgets
To add a widget, press and hold anywhere on the home screen, and select the "Widgets" option.

Press and hold widgets to place them on the home screen as shown below.

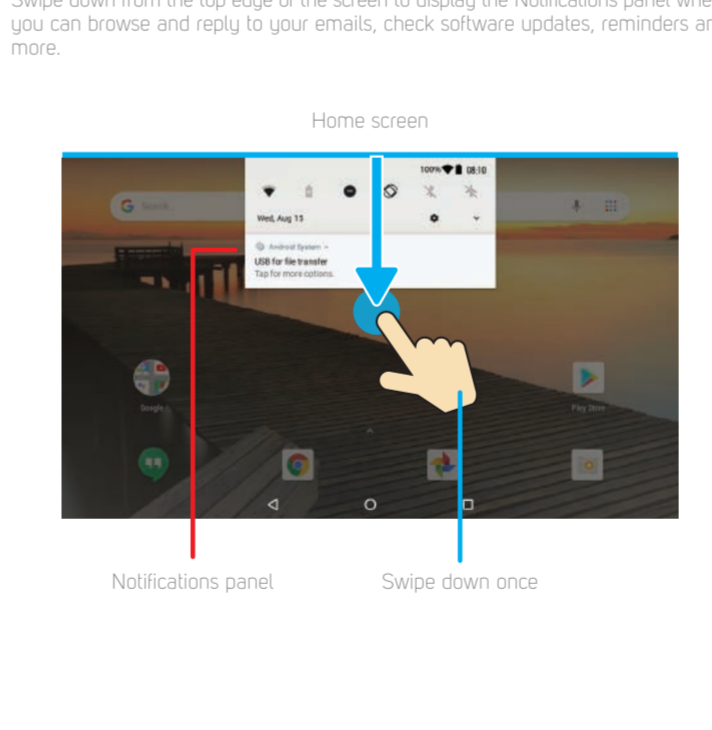


Swipe up ^ indicator on the home screen to access the Apps Screen.

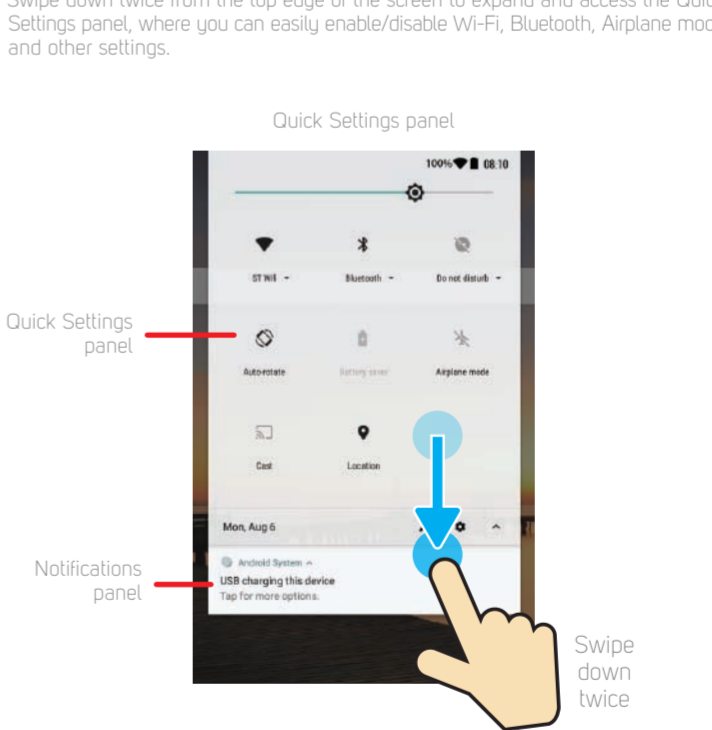


Notifications and Quick Settings

Notifications panel
Swipe down from the top edge of the screen to display the Notifications panel where you can browse and reply to your emails, check software updates, reminders and more.

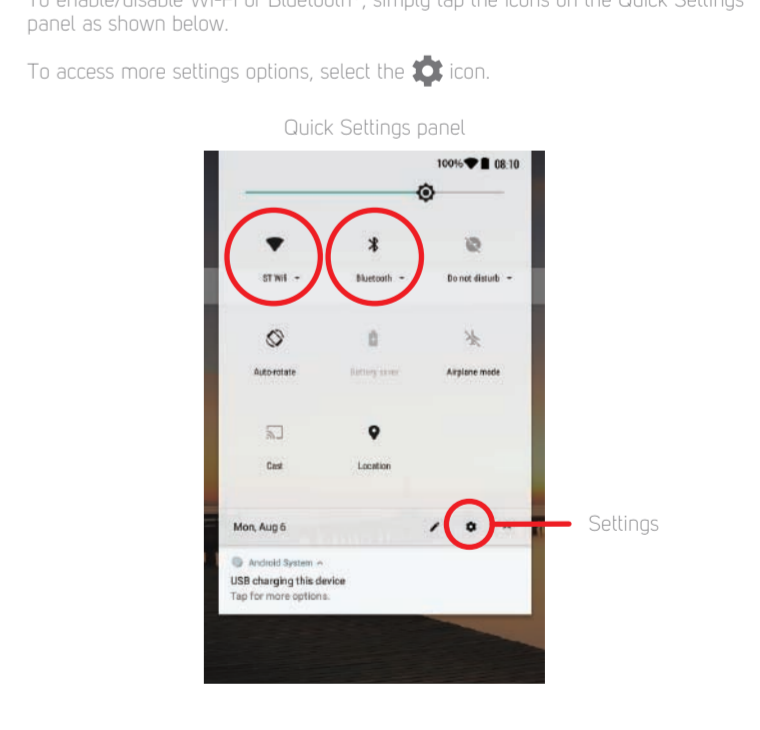


Quick Settings panel
Swipe down twice from the top edge of the screen to expand and access the Quick Settings panel, where you can easily enable/disable Wi-Fi, Bluetooth, Airplane mode and other settings.



Connecting

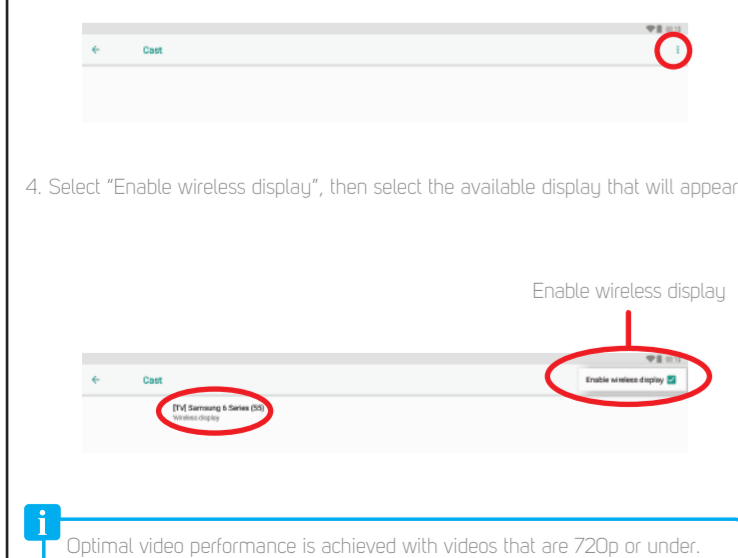
Wi-Fi and Bluetooth®
To enable/disable Wi-Fi or Bluetooth®, simply tap the icons on the Quick Settings panel as shown below.



Cast screen

Show your tablet's screen on devices with Miracast Wireless display capabilities:

1. Turn on the Miracast feature on your Miracast supported TV or Miracast dongle (not included).
2. Connect your tablet to the same Wi-Fi network as your Miracast enabled TV.
3. Go to Settings > Connected devices > Cast and tap on "Cast".

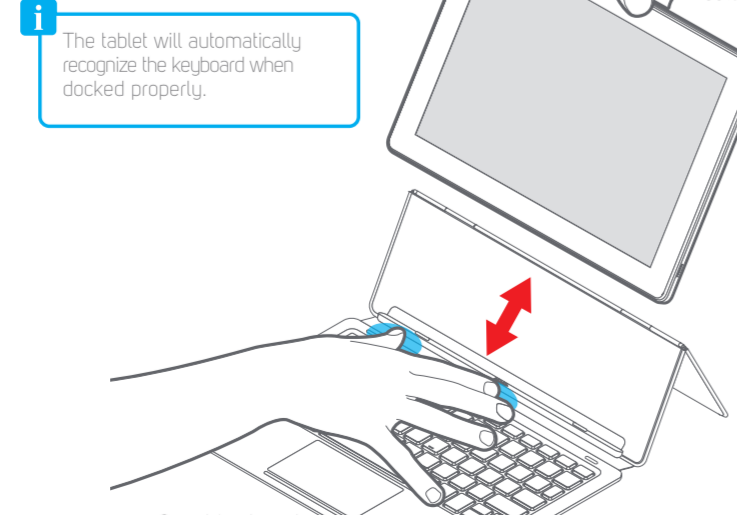


Optimal video performance is achieved with videos that are 720p or under.

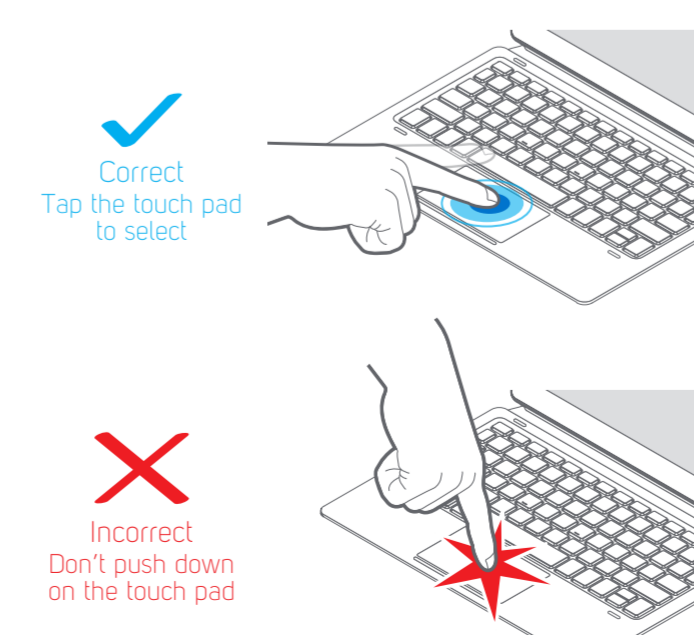
Smart keyboard

To dock the tablet to the smart keyboard, align the tablet and the smart keyboard, then slide the tablet into the dock as shown below.

To undock the tablet from the smart keyboard, firmly hold the keyboard as shown below, then gently pull the tablet upwards.

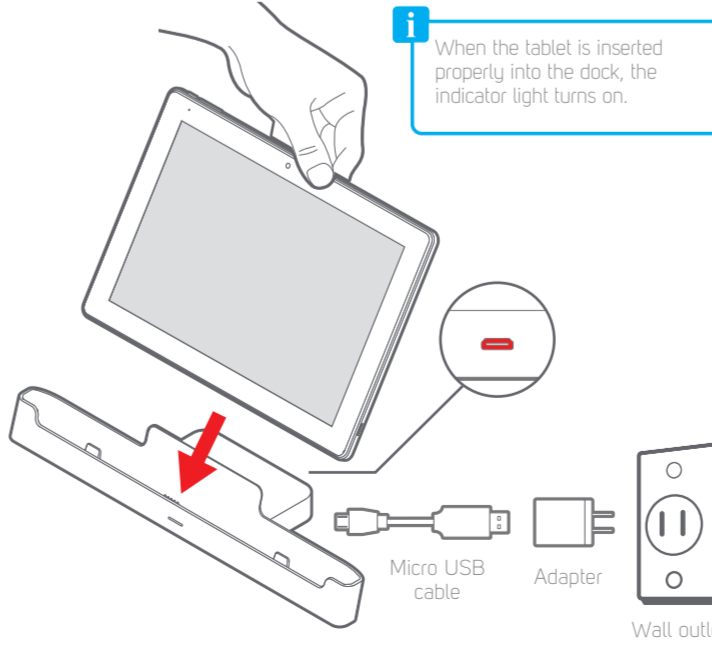


IMPORTANT
The touch pad does not have a mechanical click. Tap to select.



Charging Dock

Connect the Micro USB cable and adapter that were included with your tablet to the dock as shown below.



Legal information

FCC Part 15:
This device complies with Part 15 of the FCC Rules. Operation is subject to the following two conditions: (1) This device may not cause harmful interference, and (2) this device must accept any interference received, including interference that may cause undesired operation.

Information Regarding Exposure to Radio Frequency Energy:
This device is designed and tested to comply with the limits for a Class B digital device, pursuant to Part 15 of the FCC Rules. These limits are designed to provide reasonable protection against harmful interference in a residential installation. This device generates, uses, and can radiate radio frequency energy and, if not installed and used in accordance with the instructions, may cause harmful interference to radio communications. However, there is no guarantee that interference will not occur in a particular installation. If this equipment does cause harmful interference to radio or television reception, which can be determined by turning the equipment off and on, the user is encouraged to try to correct the interference by one or more of the following measures:

- Reorient or relocate the receiving antenna.
- Increase the separation between the equipment and receiver.
- Connect the equipment into an outlet on a circuit different from that to which the receiver is connected.
- Consult the dealer or an experienced radio/TV technician for help.

Battery Disposal & Recycle:
Packard Bell is a registered trademark of 3M Law Properties, LLC and is used under license. Google, Android, Google Play and other marks are trademarks of Google LLC. The Bluetooth word mark and logos are owned by the Bluetooth SIG, Inc. All other trademarks and trade names are those of their respective owners.

Limited Warranty

LIMITED WARRANTY TO ORIGINAL CONSUMER
This Product including any accessories included in the original packaging as supplied and distributed here by an authorized retailer is warranted by Southern Telecom, Inc. to the original consumer purchaser against defects in materials and workmanship ("Warranty") as follows:

Product Type: Tablet, Tablet, United States/Canada, Parts Warranty: 1 Year, Labor Warranty: 1 Year

To obtain warranty service:

- Call the Customer Support number located below, or go to our website portal to receive an SRQ number.
- Provide proof of the date of purchase within the package (dated bill of sale).
- Provide all shipping costs to the authorized service center, and arrange to insure your return.
- Include a return shipping address (no P.O. boxes), a telephone contact number, and the defective unit within the package.
- Describe the defect or reason you are returning the product.

Customer Support:
1-877-768-8485 (Toll Free) www.southern telecom.com
Monday - Friday 9AM - 5PM EST Click on "Product Support"

Your product will be repaired or replaced, at our option, for the same or similar model of equal value if examination by the service center determines the product is defective. Product repaired/damaged as a result of shipping will require you to be a client with the carrier.

The shipping address of the authorized service center is:

Customer Service Dept. 36
360 Squamish Trail
400 Kennedy Drive
Seymour, NJ 08672

Warranty service not provided
This device is not covered by the warranty if the damage is caused by accident, misuse, abuse, improper installation or operation, lack of reasonable care, unauthorized modification including software modifications such as the installation of custom firmwares. This warranty is voided in the event any unauthorized person opens, alters or repairs this product. All products being returned to the authorized service center for repair must be suitably packaged.

NO WARRANTIES, WHETHER EXPRESS OR IMPLIED, INCLUDING, BUT NOT LIMITED TO, ANY IMPLIED WARRANTIES OF MERCHANTABILITY OR FITNESS FOR A PARTICULAR PURPOSE, OTHER THAN THOSE EXPRESSLY SET FORTH ABOVE, SHALL APPLY TO THIS PRODUCT UNDER ANY CIRCUMSTANCES. THE WARRANTY PERIOD FOR THIS PRODUCT IS LIMITED TO THE ORIGINAL PURCHASE PRICE. AT CUSTOMER'S SOLE DISCRETION, ARE THE EXCLUSIVE REMEDIES OF THE CONSUMER. IN NO EVENT WILL CUSTOMER OR ITS FINANCIAL ADVISOR BE HELD LIABLE FOR ANY INCIDENTAL, DIRECT, INDIRECT, SPECIAL, PUNITIVE OR CONSEQUENTIAL DAMAGES, SUCH AS BUT NOT LIMITED TO, DAMAGES FOR LOSS OF PROFITS, BUSINESS, SAVINGS, DATA OR RECORDS CAUSED BY THE USE, MISUSE OR WARRANTY TO USE THE PRODUCT. EXCEPT WHERE SHOWN OTHERWISE, ALL OTHER WARRANTIES, INCLUDING ANY IMPLIED WARRANTIES OF MERCHANTABILITY OR FITNESS, SHALL NOT EXCEED THE PURCHASE PRICE OF THE PRODUCT SOLD BY THE DISTRIBUTOR. THIS WARRANTY SHALL NOT EXTEND TO ANYONE OTHER THAN THE ORIGINAL CONSUMER WHO PURCHASED THE PRODUCT FROM US THROUGH THE DISTRIBUTOR.

Some countries, states or provinces do not allow the exclusion or limitation of incidental or consequential damages or other limitations on warranties, so limitation or exclusions may not apply to you. This warranty gives you specific legal rights, and you may have other rights that vary from state to state or province to province. Contact your authorized retailer to determine if another warranty applies.