

Safety Information

IMPORTANT SAFETY INSTRUCTIONS DO NOT DESTROY

When using electrical appliances, basic safety precautions should always be followed to reduce the risk of fire, electric shock, and/or injury to persons. Misuse or failure to follow these warnings and instructions may cause overheating, fire, personal injury and/or property damage:

1. Be sure to read carefully all instructions before using this heated product.
2. Do not use this heated product with an infant, child, incapacitated or immobile person, paraplegic or quadriplegic, a diabetic, anyone insensitive to heat, such as a person with poor blood circulation, or anyone who cannot clearly understand the instructions and/or operate the controls.
3. Do not tuck in, pinch, flex or expose the wired heating area of this heated product.
4. Do not route electrical cords between the mattress and box spring. Do not allow the cords to be pinched. Do not use with damaged cords. Damaged cords can lead to overheating or fire.
5. Keep the control away from drafty areas that may become damp or wet such as an open window.
6. Do not use pins, needles or other sharp or metallic objects – They may damage the electric wiring.
7. Do not use if wet. If a spill occurs, turn heated product off, unplug, and dry before re-using.
8. Controller is not waterproof. Do not immerse in water or other liquids.
9. Be sure that this heated product is used only on an AC supply circuit of the proper voltage. Do not use with an extension cord. Do not use with generators, power converters or inverters.
10. Turn off or unplug this heated product when not in use.
11. Excessive heating may result from folding or bunching this heated product while in use.
12. Examine the heated product, cord and controller before each use for signs of wear or damage. If improper operation, wear or damage is observed, discontinue its use immediately.
13. For throw blankets and back/body pads only: Do not use with rocking chairs, recliners, chairs with casters or wheels, or other furniture subject to movement.
14. Do not use this heated product with an air mattress, on a waterbed, bunk bed, mechanically adjustable bed or a child's crib/bed.
15. Do not use in conjunction with another electrically heated product.
16. Do not tuck in the supply cord or control in a sofa or other furniture. All portions of this heated product should be visible at all times.

17. Wrapping of cord around the controller may damage the cord. Loop loosely when storing. Allow to cool before storing and do not create by placing items on top of it. Store in the original packaging, in a cool, dark, dry place.
18. Do not dry clean this heated product. Cleaning solvents may damage the insulation of the heating element. Improper laundering may cause problems with the heating wire, which can lead to fire.
19. Keep all animals, including dogs, cats and other pets away from this heated product. This is an electrical appliance that they can damage or be injured by.
20. If provided with a detachable controller, use only with the provided controller.
21. Do not use this heated product with analgesic creams, liniments, salve or ointment preparations. Skin burns could result.
22. Check with your healthcare provider before using with a pacemaker or any medical devices.
23. Not for hotel, motel, hospital or other institutional use.

SAVE THESE INSTRUCTIONS

NORTH AMERICAN MODELS WITH POLARIZED PLUGS:

POLARIZED PLUG

This appliance has a polarized plug (one blade is wider than the other). To reduce the risk of electric shock, this plug is intended to fit into a polarized outlet only one way. If the plug does not fit fully into the outlet, reverse the plug. If it still does not fit, contact a qualified electrician. Do not attempt to modify the plug in any way. If the plug fits loosely into the AC outlet or if the AC outlet feels warm do not use that outlet.



Compliance Information

READ CAREFULLY AND KEEP THIS MANUAL

FCC Information

This device complies with Part 15 of the FCC Rules.

Caution: Any changes or modifications not expressly approved could void the user's authority to operate the equipment.

Note: This equipment has been tested and found to comply with the limits for a Class B digital device, pursuant to part 15 of the FCC Rules. These limits are designed to provide reasonable protection against harmful interference in a residential installation. This equipment generates, uses and can radiate radio frequency energy and, if not installed and used in accordance with the instructions, may cause harmful interference to radio communications. However, there is no guarantee that interference will not occur in a particular installation. If this equipment does cause harmful interference to radio or television reception, which can be determined by turning the equipment off and on, the user is encouraged to try to correct the interference by one or more of the following measures:

- Reorient or relocate the receiving antenna.
- Increase the separation between the equipment and receiver.
- Connect the equipment into an outlet on a circuit different from that to which the receiver is connected.
- Consult the dealer or an experienced radio/TV technician for help.

This device complies with Part 15 of the FCC Rules. Operation is subject to the following two conditions: (1) This device may not cause harmful interference, and (2) this device must accept any interference received, including interference that may cause undesired operation

Radiation Exposure Information

The device has been evaluated to meet general RF exposure requirement. The device can be used in portable exposure condition without restriction.

This device complies with Industry Canada license – exempt RSS standard(s). Operation is subject to the following two conditions: (1) This device may not cause interference, and (2) This device must accept any interference, including interference that may cause undesired operation of the device. The digital apparatus complies with Canadian CAN ICES - 3 (B)/NMB - 3 (B). The device has been evaluated to meet general RF exposure requirement. The device can be used in portable exposure condition without restriction.

Rating Label Definitions



This symbol represents FCC Declaration of Conformity and compliance.



The ETL Mark is proof of product compliance to North American safety standards. Authorities Having Jurisdiction (AHJs) and code officials across the US and Canada accept the ETL Listed Mark as proof of product compliance to published industry standards.

Warranty Information

90-Day Limited Warranty

Territory: United States/Canada

LIMITED WARRANTY TO ORIGINAL CONSUMER

This product as supplied and distributed new by an authorized retailer is warranted by Southern Telecom, Inc. to the original consumer purchaser against defects in materials and workmanship ("Warranty") as follows:

To obtain warranty service:

- Visit our customer support portal: www.customersupport123.com
- Select the brand and model of your device
- Select "Service Request" and fill out the form to begin your inquiry
- Exchanges require dated proof of purchase from an authorized retailer

Your product will be repaired or replaced, at our option, for the same or similar model of equal value if examination by the service center determines this product is defective. Products received damaged as a result of shipping will require you to file a claim with the carrier.

Warranty service not provided

This warranty does not cover damage resulting from accident, misuse, abuse, improper installation or operation, lack of reasonable care, unauthorized modification including software modifications such as the installation of custom firmware. This warranty is voided in the event any unauthorized person opens, alters or repairs this product. All products being returned to the authorized service center for repair must be suitably packaged.

NO WARRANTIES, WHETHER EXPRESS OR IMPLIED, INCLUDING, BUT NOT LIMITED TO, ANY IMPLIED WARRANTIES OF MERCHANTABILITY OR FITNESS FOR A PARTICULAR PURPOSE, OTHER THAN THOSE EXPRESSLY DESCRIBED ABOVE SHALL APPLY. DISTRIBUTOR FURTHER DISCLAIMS ALL WARRANTIES AFTER THE EXPRESS WARRANTY PERIOD STATED ABOVE. NO OTHER EXPRESS WARRANTY OR GUARANTY GIVEN BY ANY PERSON, FIRM OR ENTITY WITH RESPECT TO THE PRODUCT SHALL BE BINDING ON DISTRIBUTOR. REPAIR, REPLACEMENT, OR REFUND OF THE ORIGINAL PURCHASE PRICE - AT DISTRIBUTOR'S SOLE DISCRETION - ARE THE EXCLUSIVE REMEDIES OF THE CONSUMER. IN NO EVENT WILL DISTRIBUTOR OR ITS MANUFACTURERS BE LIABLE FOR ANY INCIDENTAL, DIRECT, INDIRECT, SPECIAL, PUNITIVE OR CONSEQUENTIAL DAMAGES (SUCH AS, BUT NOT LIMITED TO, DAMAGES FOR LOSS OF PROFITS, BUSINESS, SAVINGS, DATA OR RECORDS) CAUSED BY THE USE, MISUSE OR INABILITY TO USE THE PRODUCT. EXCEPT AS STATED HEREIN, NO OTHER WARRANTIES SHALL APPLY. NOTWITHSTANDING THE FOREGOING, CONSUMER'S RECOVERY AGAINST DISTRIBUTOR SHALL NOT EXCEED THE PURCHASE PRICE OF THE PRODUCT SOLD BY DISTRIBUTOR. THIS WARRANTY SHALL NOT EXTEND TO ANYONE OTHER THAN THE ORIGINAL CONSUMER WHO PURCHASED THE PRODUCT AND IS NOT TRANSFERABLE.

Some countries, states or provinces do not allow the exclusion or limitation of incidental or consequential damages or allow limitations on warranties, so limitation or exclusions may not apply to you. This warranty gives you specific legal rights, and you may have other rights that vary from state to state or province to province. Contact your authorized retailer to determine if another warranty applies.

MÄHLI

Soft Plush Heated Blanket



MÄHLI

All product names, trademarks, and registered trademarks are property of their respective owners. All company, product, and service names used in this document are for identification purposes only. Use of these names, trademarks, and brands does not imply endorsement.

Instruction Manual
MDM6007

Printed in China
v1_04-2021

Before You Begin...

NOT Intended for Medical Use

This product is designed as a non-professional device for comfort and relaxation. **It is not intended to be a substitute for medical attention.** If your ailments persist or worsen after use, contact your doctor immediately.

Please consult your doctor prior to using this product, if

- You are pregnant
- You have a pacemaker
- You have any concerns regarding your health

⚠ Caution

Make sure to read ALL cleaning and safety instructions in this manual before using.

- THIS IS NOT A TOY, please keep away from children
- Do not expose the unit to extreme temperatures (heat or cold), open flames, humid conditions, or wet conditions
- **Do not submerge in water**
- This product should not be used by people who are sensitive to heat or anyone who is unable to properly operate the controls
- Children and persons with reduced ability to operate the controls should not use the product except under strict supervision
- Never leave the appliance operating unattended
- Do not operate after taking pain killers, sedatives or alcohol
- The electrical and magnetic fields emitted by this unit may interfere with the function of a pacemaker. Please consult your doctor and the manufacturer of your pacemaker before using
- This unit must be checked frequently for signs of wear and tear or damage. If you detect signs of improper use of the unit, it must be inspected by the manufacturer before turning it on again.
- If the cables of this unit or the charger are damaged, they MUST be replaced by the manufacturer, its customer service department or similarly qualified person
- Do NOT open this product or attempt to repair the unit yourself should it not be working.

Questions & Customer Support

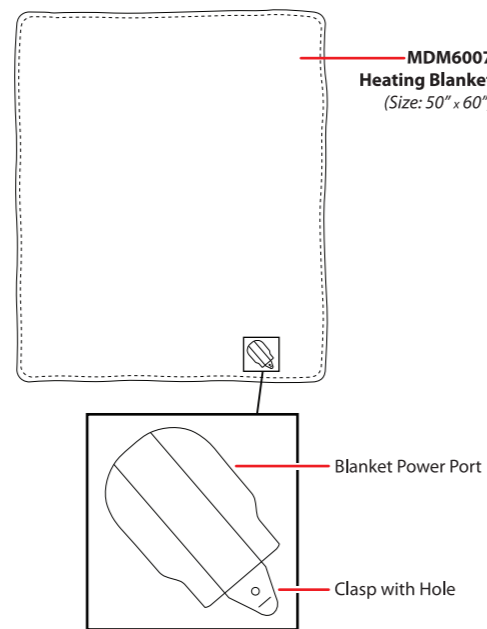
For questions, troubleshooting or any other assistance, please visit our website at customersupport123.com.

Location of Controls

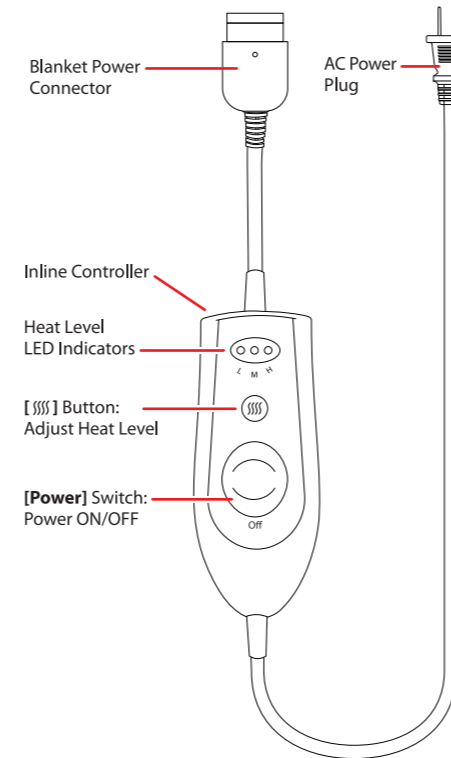
In the Box

- MDM6007 - Heated Blanket (x1)
- Power Cord with Inline Controller (x1)
- Instruction Manual (x1)

Location of Controls



Location of Controls (cont'd)



Getting Started

Setting Up

1. Locate the power port near the bottom of the blanket. Line the power adapter's Blanket Power Connector up with the blanket's power port in the correct direction, as shown in the diagram on the right. The connector only fits in one direction.
2. Plug the connector into the port. The bump on the top of the connector will snap into the clasp hole on the port.
3. Plug the adapter's AC power plug into a nearby wall socket.

Powering ON/OFF

Move the [Power] switch on the inline controller up or down to power the blanket ON or OFF.

⚠ **NOTE:** The heating blanket has a 2-hour automatic shut-off timer. If the blanket shuts off automatically, you must move the [Power] switch to the OFF position before you can power it back on again.

Using the Blanket

- Power the blanket ON. All 3 Heat Level LED Indicators will light up, meaning the blanket is powered ON in High Heat [H] mode.
- Press the [||||] button to switch to Medium Heat [M] mode.
 - Press the [||||] button again to switch to Low Heat [L] mode.
 - Press the [||||] button a 3rd time to turn the heat off.
 - Press a 4th time to return to High Heat [H] mode.

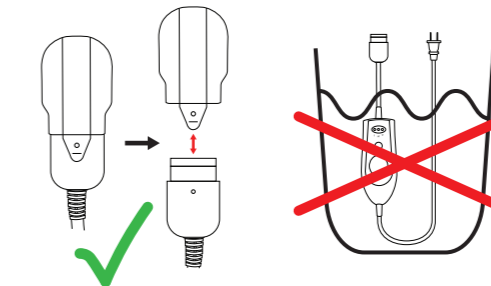
LED Indicators	
●●●●	High Heat Mode
●●●○	Med. Heat Mode
●●○●	Low Heat Mode
○○○○	Heating Off

Cleaning & Maintenance

Washing Instructions

⚠ **Warning:** Failure to follow proper washing instructions can result in fire, personal injury and/or damage to the blanket.

- **Disconnect power cord before washing.**
- Hand wash or machine wash warm on gentle or delicate cycle only. See the following sections for detailed instruction.
- NEVER dry clean or use bleach.
- NEVER submerge cords or control unit. Place blanket without cords in the washing machine.



Hand Washing (Recommended)

Washing this item by hand will result in a much longer product-life then using a machine.

1. **Disconnect the power cord** and wash the blanket separately by hand in lukewarm (100°F) water, using a small amount of mild laundry detergent. Soak for 5 minutes, then gently work the blanket up and down for 5 more minutes. NEVER rub or scrub the blanket.
2. Rinse thoroughly in cool water until all traces of detergent are gone. Squeeze excess water out by hand, NEVER twist. Do NOT use a wringer.

Machine Washing

1. Before inserting blanket, fill washer with warm water. Add a minimal amount of all-purpose detergent. Stir to dissolve the detergent.
2. **Make sure the power cord is detached from the blanket.** Place the blanket in the machine, and soak for 5 minutes.
3. Spin for 2 minutes. Fill with cool water to rinse, and spin for 1 minute.

Drying Instructions

⚠ **Warning:** NEVER use commercial dryers at the laundromat as they may be extra hot and can damage the wiring of the product.

- Do NOT iron.
- Do NOT plug in until completely dry.

It is recommended to air dry the blanket, but it can also be machine dried.

- **To air dry (recommended),** simply drape the blanket over clotheslines or a shower rod, and let completely dry.
- **To machine dry,** tumble dry on low heat until completely dry. Ensure that the blanket has enough room to tumble freely.

Do NOT reconnect the item until it is completely dry. Do NOT use clothespins that can pinch wires.

Storage

Unplug and let cool down completely. Disconnect the power cord.

Store the blanket and power cord away from sources of wind, heat, sunlight and water. They are best stored in an airtight box or bag (not included).