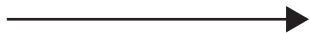


FOLD INWARD



(Back Cover)



(Front Cover)



Compliance Information

READ CAREFULLY AND KEEP THIS MANUAL

FCC Information

This device complies with Part 15 of the FCC Rules.

Caution: Any changes or modifications not expressly approved could void the user's authority to operate the equipment.

Note: This equipment has been tested and found to comply with the limits for a Class B digital device, pursuant to part 15 of the FCC Rules. These limits are designed to provide reasonable protection against harmful interference in a residential installation. This equipment generates, uses and can radiate radio frequency energy and, if not installed and used in accordance with the instructions, may cause harmful interference to radio communications. However, there is no guarantee that interference will not occur in a particular installation. If this equipment does cause harmful interference to radio or television reception, which can be determined by turning the equipment off and on, the user is encouraged to try to correct the interference by one or more of the following measures:

- Reorient or relocate the receiving antenna.
- Increase the separation between the equipment and receiver.
- Connect the equipment into an outlet on a circuit different from that to which the receiver is connected.
- Consult the dealer or an experienced radio/TV technician for help.

This device complies with Part 15 of the FCC Rules. Operation is subject to the following two conditions: (1) This device may not cause harmful interference, and (2) this device must accept any interference received, including interference that may cause undesired operation.

Radiation Exposure Information

This device has been evaluated to meet general RF exposure requirements. The device can be used in portable exposure conditions without restriction.

Rating Label Definitions



Direct current symbol



This symbol represents FCC Declaration of Conformity and compliance.

Warranty Information

90-day Limited Warranty

Territory: United States/Canada

LIMITED WARRANTY TO ORIGINAL CONSUMER

This product (including any accessories included in the original packaging) as supplied and distributed new by an authorized retailer is warranted by Southern Telecom, Inc. to the original consumer purchaser against defects in materials and workmanship ("Warranty") as follows:

To obtain warranty service:

- Visit our website at www.southerntelecom.com
- Click on **Product Support**
- Select the **Brand** of your device
- Select **Service Request** and fill out the form to begin your inquiry

Your product will be repaired or replaced, at our option, for the same or similar model of equal value if examination by the service center determines this product is defective. Products received damaged as a result of shipping will require you to file a claim with the carrier.

Warranty service not provided

This warranty does not cover damage resulting from accident, misuse, abuse, improper installation or operation, lack of reasonable care, unauthorized modification including software modifications such as the installation of custom firmware. This warranty is voided in the event any unauthorized person opens, alters or repairs this product. All products being returned to the authorized service center for repair must be suitably packaged.

NO WARRANTIES, WHETHER EXPRESS OR IMPLIED, INCLUDING, BUT NOT LIMITED TO, ANY IMPLIED WARRANTIES OF MERCHANTABILITY OR FITNESS FOR A PARTICULAR PURPOSE, OTHER THAN THOSE EXPRESSLY DESCRIBED ABOVE SHALL APPLY. DISTRIBUTOR FURTHER DISCLAIMS ALL WARRANTIES AFTER THE EXPRESS WARRANTY PERIOD STATED ABOVE. NO OTHER EXPRESS WARRANTY OR GUARANTY GIVEN BY ANY PERSON, FIRM OR ENTITY WITH RESPECT TO THE PRODUCT SHALL BE BINDING ON DISTRIBUTOR. REPAIR, REPLACEMENT, OR REFUND OF THE ORIGINAL PURCHASE PRICE - AT DISTRIBUTOR'S SOLE DISCRETION - ARE THE EXCLUSIVE REMEDIES OF THE CONSUMER. IN NO EVENT WILL DISTRIBUTOR OR ITS MANUFACTURERS BE LIABLE FOR ANY INCIDENTAL, DIRECT, INDIRECT, SPECIAL, PUNITIVE OR CONSEQUENTIAL DAMAGES (SUCH AS, BUT NOT LIMITED TO, DAMAGES FOR LOSS OF PROFITS, BUSINESS, SAVINGS, DATA OR RECORDS) CAUSED BY THE USE, MISUSE OR INABILITY TO USE THE PRODUCT, EXCEPT AS STATED HEREIN. NO OTHER WARRANTIES SHALL APPLY, NOTWITHSTANDING THE FOREGOING. CONSUMER'S RECOVERY AGAINST DISTRIBUTOR SHALL NOT EXCEED THE PURCHASE PRICE OF THE PRODUCT SOLD BY DISTRIBUTOR. THIS WARRANTY SHALL NOT EXTEND TO ANYONE OTHER THAN THE ORIGINAL CONSUMER WHO PURCHASED THE PRODUCT AND IS NOT TRANSFERABLE.

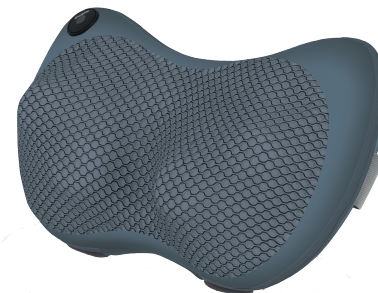
Some countries, states or provinces do not allow the exclusion or limitation of incidental or consequential damages or allow limitations on warranties, so limitation or exclusions may not apply to you. This warranty gives you specific legal rights, and you may have other rights that vary from state to state or province to province. Contact your authorized retailer to determine if another warranty applies.

All product names, trademarks, and registered trademarks are property of their respective owners. All company, product, and service names used in this document are for identification purposes only. Use of these names, trademarks, and brands does not imply endorsement.

Designed in the U.S.
Made in China
v1. 09/2020

MÄHLI

HEATING SHIATSU Massage Pillow



User Guide
MDM1201

Before You Begin...

NOT Intended for Medical Use

This product is designed as a non-professional device for comfort and relaxation. It is not intended to be a substitute for medical attention. If your ailments persist or worsen after use, contact your doctor immediately.

Please consult your doctor prior to using this product, if

- You are pregnant
- You have a pacemaker
- You have any concerns regarding your health

Caution

- **THIS IS NOT A TOY, please keep away from children**
- Keep away from water and extreme temperatures
- This product should not be used by people who are sensitive to heat or anyone who is unable to properly operate the controls
- Children and persons with reduced ability to operate the controls should not use the product except under strict supervision
- Never leave the appliance operating unattended
- Do not operate after taking pain killers, sedatives or alcohol
- The electrical and magnetic fields emitted by this unit may interfere with the function of a pacemaker. Please consult your doctor and the manufacturer of your pacemaker before using
- This unit must be checked frequently for signs of wear and tear or damage. If you detect signs of improper use of the unit, it must be inspected by the manufacturer before turning it on again.
- If the cables of this unit or the charger are damaged, they MUST be replaced by the manufacturer, its customer service department or similarly qualified person

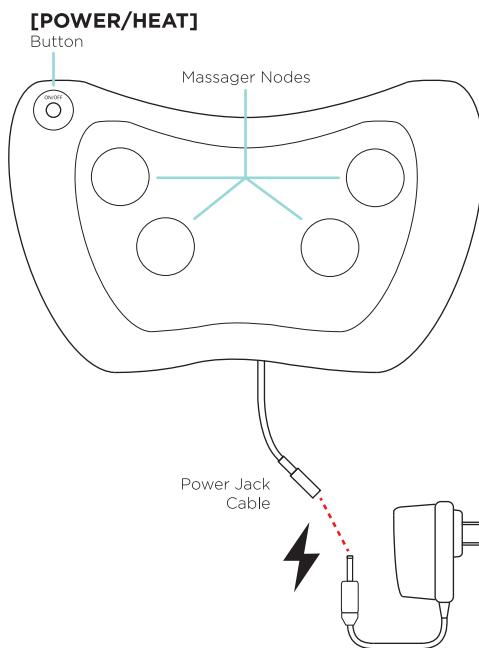
Questions & Customer Support

For questions, troubleshooting or any other assistance, please visit our website at SouthernTelecom.com and click on **Product Support**.

In the Box

- MDM1201 - Shiatsu Massager (x1)
- Power Adapter (x1)
- Instruction Manual (x1)

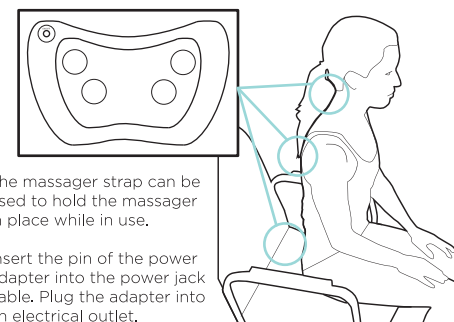
Location of Controls



Getting Started

Placement & Setup

The massager is intended for use on the neck, lower back, and shoulders. For optimal use, sit in a chair and place the massager in the spot you would like to massage.



The massager strap can be used to hold the massager in place while in use.

Insert the pin of the power adapter into the power jack cable. Plug the adapter into an electrical outlet.

Using the Massager

- Press the **[Power/Heat]** button to turn the massager on. Heat will be enabled and the LED indicator will turn red. The nodes will begin massaging, alternating direction every 1 minute.
- Press the **[Power/Heat]** button again and the massage nodes will massage in a single direction, alternating every minute.
- Press the **[Power/Heat]** button a 3rd time to disable the heat. The LED indicator will turn off.
- Press the **[Power/Heat]** button a 4th time to power OFF.

Note: The massager will automatically turn OFF after 15 minutes.

Note: If the massager nodes are held in place, the massager will automatically shut off. To restart, power the massager back on.