

# LOMIMEN

## Nose & Ear Groomer LOMMN1113

### READ FULL CARD CAREFULLY BEFORE USE AND KEEP FOR FUTURE REFERENCE

#### **⚠ Important Safety Warning**

Do NOT insert the groomer too far into the ear or nostril, as this can cause injury. Do not use on any other body parts. Please consult your doctor prior to using this product if you have any concerns regarding your health.

#### **General Warnings**

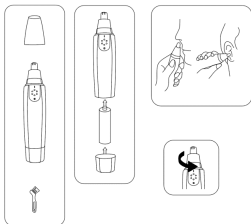
- THIS IS NOT A TOY, **please keep away from children.**
- Follow **all** instructions. Use the appliance only for its intended uses as described in this manual.
- Keep away from extreme temperatures (heat or cold) and open flames.
- Supervision is recommended when this appliance is used by, on or near children or individuals with certain disabilities.
- Never operate an appliance if it is not working properly or is damaged.
- Keep the appliance away from heated surfaces.
- Do not operate after taking pain killers, sedatives or alcohol.
- Do not open this product or attempt to repair the unit yourself.

#### **In the Box**

- Groomer (x1)
- Brush (x1)
- Instruction Card (x1)

#### **Installing a Battery**

1. Unscrew the battery compartment from the bottom of the groomer.
2. Install one (1) new AA-sized battery (not included), following the polarity (+/-) diagram in the compartment.
3. Screw the compartment cover back on.



#### **Using the Groomer**

Press the button on the handle to power the groomer ON. Carefully trim the hair in your nostril or ear, staying close to the opening of the nostril or ear. When finished grooming, power OFF and use the included brush to clear trimmed hairs away.

## Storing the Groomer

When not using for a long period of time, remove the battery and store the groomer in a cool, dry location, away from sources of water, heat or dust. It is best stored in an airtight box or bag (*not included*).

## Cleaning the Groomer

Clean the groomer with a soft, damp cloth, using no abrasive cleaners. Do NOT immerse in water or any type of liquid, or allow the battery to get wet. Allow to dry completely before using.

## 90-day Limited Warranty

Territory: United States/Canada

### LIMITED WARRANTY TO ORIGINAL CONSUMER

This product as supplied and distributed new by an authorized retailer is warranted by Southern Telecom, Inc. to the original consumer purchaser against defects in materials and workmanship ("Warranty") as follows:

#### To obtain warranty service:

- Visit our customer support portal: [www.customersupport123.com](http://www.customersupport123.com)
- Select the brand and model of your device
- Select "Service Request" and fill out the form to begin your inquiry
- Exchanges require dated proof of purchase from an authorized retailer

Your product will be repaired or replaced, at our option, for the same or similar model of equal value if examination by the service center determines this product is defective. Products received damaged as a result of shipping will require you to file a claim with the carrier.

#### Warranty service not provided

This warranty does not cover damage resulting from accident, misuse, abuse, improper installation or operation, lack of reasonable care, unauthorized modification including software modifications such as the installation of custom firmware. This warranty is voided in the event any unauthorized person opens, alters or repairs this product. All products being returned to the authorized service center for repair must be suitably packaged.

NO WARRANTIES, WHETHER EXPRESS OR IMPLIED, INCLUDING, BUT NOT LIMITED TO, ANY IMPLIED WARRANTIES OF MERCHANTABILITY OR FITNESS FOR A PARTICULAR PURPOSE, OTHER THAN THOSE EXPRESSLY DESCRIBED ABOVE SHALL APPLY. DISTRIBUTOR FURTHER DISCLAIMS ALL WARRANTIES AFTER THE EXPRESS WARRANTY PERIOD STATED ABOVE. NO OTHER EXPRESS WARRANTY OR GUARANTEE GIVEN BY ANY PERSON, FIRM OR ENTITY WITH RESPECT TO THE PRODUCT SHALL BE BINDING ON DISTRIBUTOR. REPAIR, REPLACEMENT, OR REFUND OF THE ORIGINAL PURCHASE PRICE - AT DISTRIBUTOR'S SOLE DISCRETION - ARE THE EXCLUSIVE REMEDIES OF THE CONSUMER. IN NO EVENT WILL DISTRIBUTOR OR ITS MANUFACTURERS BE LIABLE FOR ANY INCIDENTAL, DIRECT, INDIRECT, SPECIAL, PUNITIVE OR CONSEQUENTIAL DAMAGES (SUCH AS, BUT NOT LIMITED TO, DAMAGES FOR LOSS OF PROFITS, BUSINESS, SAVINGS, DATA OR RECORDS) CAUSED BY THE USE, MISUSE OR INABILITY TO USE THE PRODUCT. EXCEPT AS STATED HEREIN, NO OTHER WARRANTIES SHALL APPLY. NOTWITHSTANDING THE FOREGOING, CONSUMER'S RECOVERY AGAINST DISTRIBUTOR SHALL NOT EXCEED THE PURCHASE PRICE OF THE PRODUCT SOLD BY DISTRIBUTOR. THIS WARRANTY SHALL NOT EXTEND TO ANYONE OTHER THAN THE ORIGINAL CONSUMER WHO PURCHASED THE PRODUCT AND IS NOT TRANSFERABLE.

Some countries, states or provinces do not allow the exclusion or limitation of incidental or consequential damages or allow limitations on warranties, so limitation or exclusions may not apply to you. This warranty gives you specific legal rights, and you may have other rights that vary from state to state or province to province. Contact your authorized retailer to determine if another warranty applies.

**All product names, trademarks, and registered trademarks are property of their respective owners. All company, product, and service names used in this document are for identification purposes only. Use of these names, trademarks, and brands does not imply endorsement.**

Printed in China  
v1. 02-2021