

Brookstone®

PATIOOLITE

Wireless LED Umbrella Speaker

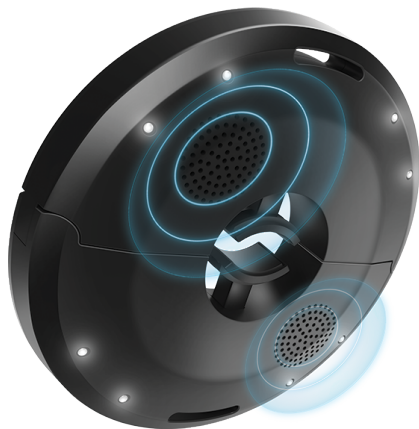


TABLE OF CONTENTS

Compliance Information.....	1
Before You Begin...	
Additional Warnings.....	3
In the Box.....	3
Getting Started	
Location of Controls.....	4
Charging the Speaker.....	5
Powering ON/OFF.....	5
Turning the Lights ON/OFF.....	5
Bluetooth Pairing.....	6
Using the AUX Port.....	6
Attaching to an Umbrella.....	7
Warranty Information.....	8

FCC Information

This device complies with Part 15 of the FCC Rules.

Caution: Any changes or modifications not expressly approved could void the user's authority to operate the equipment.

Note: This equipment has been tested and found to comply with the limits for a Class B digital device, pursuant to part 15 of the FCC Rules. These limits are designed to provide reasonable protection against harmful interference in a residential installation. This equipment generates, uses and can radiate radio frequency energy and, if not installed and used in accordance with the instructions, may cause harmful interference to radio communications. However, there is no guarantee that interference will not occur in a particular installation. If this equipment does cause harmful interference to radio or television reception, which can be determined by turning the equipment off and on, the user is encouraged to try to correct the interference by one or more of the following measures:

- Reorient or relocate the receiving antenna.
- Increase the separation between the equipment and receiver.
- Connect the equipment into an outlet on a circuit different from that to which the receiver is connected.
- Consult the dealer or an experienced radio/TV technician for help.

This device complies with Part 15 of the FCC Rules. Operation is subject to the following two conditions: (1) This device may not cause harmful interference, and (2) this device must accept any interference received, including interference that may cause undesired operation.

Radiation Exposure Information

The device has been evaluated to meet general RF exposure requirement. The device can be used in portable exposure condition without restriction.

WARNING Li-ion Battery Inside

This product is fitted with a Li-ion battery. Do not damage, open, or dismantle the battery and do not use it in damp and/or corrosive conditions. Use only with compatible chargers. Never dispose of batteries in a fire, and never expose them to high temperatures. Do not expose the product to temperatures exceeding 60°C (140°F).



Rating Label Definitions



Direct current symbol.



This symbol signifies that this is a wireless device powered by Bluetooth® technology. The Bluetooth® word mark and logos are registered trademarks owned by Bluetooth SIG, Inc., used under license.



This symbol signifies that the product must not be discarded as household waste, and should be delivered to an appropriate collection facility for recycling. Proper disposal and recycling helps protect natural resources, human health and the environment.



This symbol signifies and declares that this equipment complies with battery charging which complies with California CEC and energy efficiency.

Before You Begin...

READ THIS MANUAL CAREFULLY AND SAVE FOR FUTURE REFERENCE

To ensure safe and proper use, read all safety information before using the device. Only use with manufacturer-approved batteries, chargers, accessories, and supplies.

- **THIS DEVICE IS NOT A TOY**, do NOT allow children or pets to use or play with this device.
- **Do not disassemble, modify, or repair the device.**
- Do not expose the device to extreme temperatures (heat or cold), open flames, humid, or wet conditions.
- Low battery may cause poor Bluetooth connection or sound distortion.
- Do not overcharge battery.
- **Do not submerge in water.**
- Do not allow any of the ports on the speaker or any of the connectors of the supplied power adapter or cables to be exposed to dust or water, or come into contact with any conductive materials such as liquids, metallic powders, etc.
- The speaker contains a built-in battery and should not be disposed of with regular household waste. Please consult the local authorities on the correct way to dispose of this device.

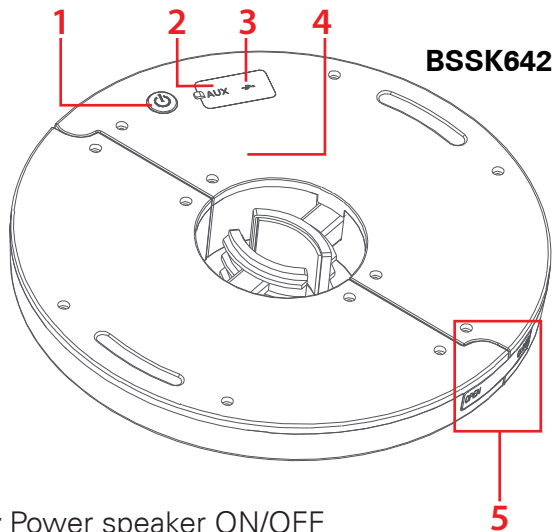
Questions & Customer Support


For any issues concerning this product, please visit our website at **customersupport123.com**.

In the Box

- BSSK642 - Wireless Speaker (x1)
- Micro-USB Charging Cable (x1)
- Instruction Manual (x1)

Location of Controls



1.  Button:
Press + hold: Power speaker ON/OFF
Press: Turn lights ON/OFF
2. 3.5mm Auxiliary Input Jack
3. Micro-USB Charging Port
4. LED Indicator
5. Umbrella Locking Clasp

Charging the Speaker

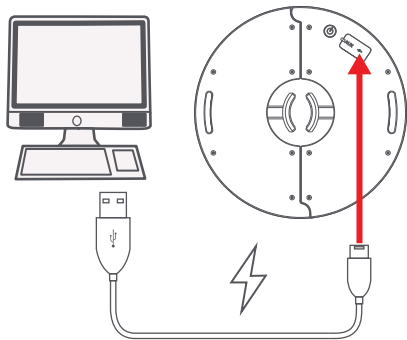
WARNING: While charging, the speaker should NOT be exposed to any water or liquid.

NOTE: The speaker should not be used while charging as it will not properly or fully charge while in use.



Undo the protective seal and plug the micro-USB connector (smaller) of the supplied charging cable into the micro-USB charging port on the speaker.

Plug the USB connector (larger) into a USB power source, such as the USB port on a computer, or a **5V USB adapter** (not included).


The LED indicator will turn RED while charging and turn OFF when fully charged.



Powering ON/OFF

- **Press + hold** the  button to turn the speaker ON.
- **Press + hold** the  button again to turn the speaker OFF.

Turning the Lights ON/OFF

- Press the  button to turn the lights ON/OFF.

Bluetooth Pairing

1. Power the speaker ON. A tone will be heard and the LED indicator will **flash WHITE**.
2. Set your mobile device to search for Bluetooth devices. When it appears, select **BSSK642** from the list of found devices.
3. After a successful pairing, a tone will be heard and the LED indicator will continue to flash white, and you will be able to play music on the speaker.

WARNING: This speaker has an IPX4 rating. This means it is protected from a splash of water in any direction for no more than 10 minutes, but **CANNOT**, under any circumstances, be submerged in water. The protective rubber seal needs to completely cover the speaker's input panel to protect it from water damage.

If the Speaker Gets Wet: If you are going to charge the speaker or connect a device to it with the AUX cable, move the speaker to a dry location, dry the speaker off, then undo the rubber seal, checking that nothing underneath the seal is wet, before attaching any cables to the charging port of the Aux-in jack.

Using the AUX Port

WARNING: Do NOT use the auxiliary input jack if the speaker is wet. The auxiliary input jack **MUST** be dry before using.

Undo the protective seal over the AUX port on the speaker, and plug one end of a 3.5 mm auxiliary cable (*not included*). Plug the other end into the headphone jack or 3.5 mm AUX output port on your media-playing device.

In AUX mode, all playback and volume will be controlled by your connected device.

Attaching to an Umbrella

Make sure that the umbrella or pole you are attaching the speaker to is sturdy and **between 1.5" and 2.0"** in diameter.

NOTE: The speaker is water resistant but should NOT come into direct contact with water or heavy rainfall.

Releasing (1-2) and Closing (3-4) the Clasp



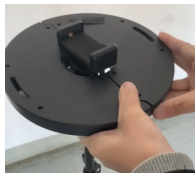
1. Press in left side of clasp.



2. Pull right side of clasp out.
Open speaker.



3. Place speaker around umbrella or pole. Close.
Press in left side of clasp.

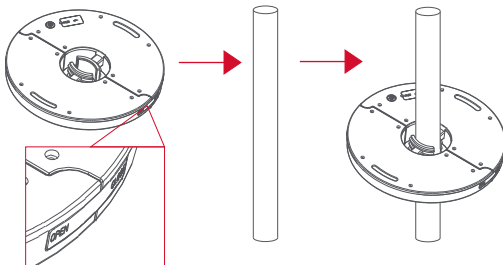


4. Press in right side of clasp to lock.

Release the umbrella lock on the side of the speaker and open.

Place the speaker at the position of your choice around the pole of a table umbrella and close the speaker.

Lock the speaker.



Warranty Information

90-Day Limited Warranty

Territory: United States

LIMITED WARRANTY TO ORIGINAL CONSUMER

This product as supplied and distributed new by an authorized retailer is warranted by Southern Telecom, Inc. to the original consumer purchaser against defects in materials and workmanship ("Warranty") as follows:

To obtain warranty service:

- Visit our customer support portal: **www.customersupport123.com** and select "**Support**".
- Select the brand, fill out the corresponding form (exchanges require dated proof of purchase from an authorized retailer) then submit your request.

Your product will be repaired or replaced, at our option, for the same or similar model of equal value if examination by the service center determines this product is defective. Products received damaged as a result of shipping will require you to file a claim with the carrier.

Warranty service not provided

This warranty does not cover damage resulting from accident, misuse, abuse, improper installation or operation, lack of reasonable care, unauthorized modification including software modifications such as the installation of custom firmware. This warranty is voided in the event any unauthorized person opens, alters or repairs this product. All products being returned to the authorized service center for repair must be suitably packaged.

Warranty (cont'd)

NO WARRANTIES, WHETHER EXPRESS OR IMPLIED, INCLUDING, BUT NOT LIMITED TO, ANY IMPLIED WARRANTIES OF MERCHANTABILITY OR FITNESS FOR A PARTICULAR PURPOSE, OTHER THAN THOSE EXPRESSLY DESCRIBED ABOVE SHALL APPLY. DISTRIBUTOR FURTHER DISCLAIMS ALL WARRANTIES AFTER THE EXPRESS WARRANTY PERIOD STATED ABOVE. NO OTHER EXPRESS WARRANTY OR GUARANTY GIVEN BY ANY PERSON, FIRM OR ENTITY WITH RESPECT TO THE PRODUCT SHALL BE BINDING ON DISTRIBUTOR. REPAIR, REPLACEMENT, OR REFUND OF THE ORIGINAL PURCHASE PRICE - AT DISTRIBUTOR'S SOLE DISCRETION - ARE THE EXCLUSIVE REMEDIES OF THE CONSUMER. IN NO EVENT WILL DISTRIBUTOR OR ITS MANUFACTURERS BE LIABLE FOR ANY INCIDENTAL, DIRECT, INDIRECT, SPECIAL, PUNITIVE OR CONSEQUENTIAL DAMAGES (SUCH AS, BUT NOT LIMITED TO, DAMAGES FOR LOSS OF PROFITS, BUSINESS, SAVINGS, DATA OR RECORDS) CAUSED BY THE USE, MISUSE OR INABILITY TO USE THE PRODUCT. EXCEPT AS STATED HEREIN, NO OTHER WARRANTIES SHALL APPLY. NOTWITHSTANDING THE FOREGOING, CONSUMER'S RECOVERY AGAINST DISTRIBUTOR SHALL NOT EXCEED THE PURCHASE PRICE OF THE PRODUCT SOLD BY DISTRIBUTOR. THIS WARRANTY SHALL NOT EXTEND TO ANYONE OTHER THAN THE ORIGINAL CONSUMER WHO PURCHASED THE PRODUCT AND IS NOT TRANSFERABLE.

Some countries, states or provinces do not allow the exclusion or limitation of incidental or consequential damages or allow limitations on warranties, so limitation or exclusions may not apply to you. This warranty gives you specific legal rights, and you may have other rights that vary from state to state or province to province. Contact your authorized retailer to determine if another warranty applies.

All product names, trademarks, and registered trademarks are property of their respective owners. All company, product, and service names used in this document are for identification purposes only. Use of these names, trademarks, and brands does not imply endorsement.

The Bluetooth® word mark and logos are registered trademarks owned by Bluetooth SIG, Inc., used under license.

Brookstone© trademark, name and logos are trademarks of BKST Brand Holdings LLC and used under license.

Manufactured and Marked by Southern Telecom, Inc. under license.

Southern Telecom
Brooklyn, NY 11220

Model No.: BSSK642