

# Brookstone®

---

## BIG BLUE PARTY

HIGH POWER WIRELESS SPEAKER

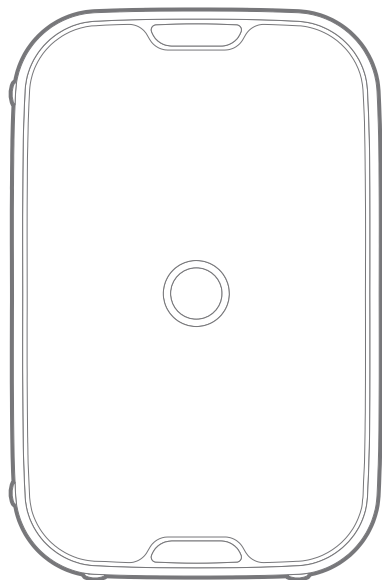


BKS800

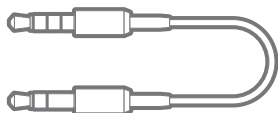
# INDEX

In the Box	01
Location of Controls	02
Speaker Placement	04
Charging	05
Power Button	06
Power ON/OFF	07
Bluetooth Pairing	08
Linking Two Speakers	11
Battery Indicator	14
Power Bank	15
Qi Wireless Charging Pad	16
Light Modes	17
Factory Reset	18
Waterproof Rating – IPX5	19
FCC Information	20
Limited Warranty	21

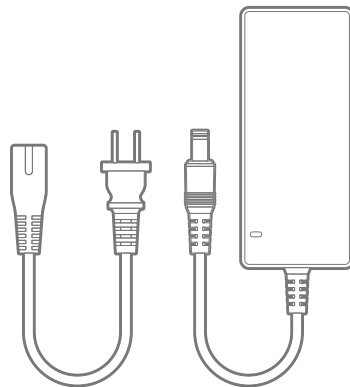
# IN THE BOX



Wireless Speaker



3.5mm Audio Cable

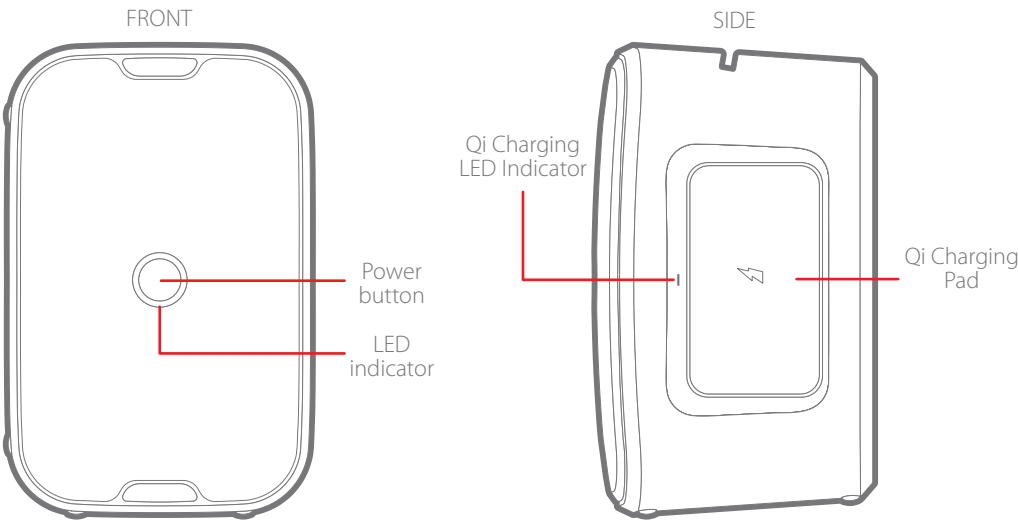
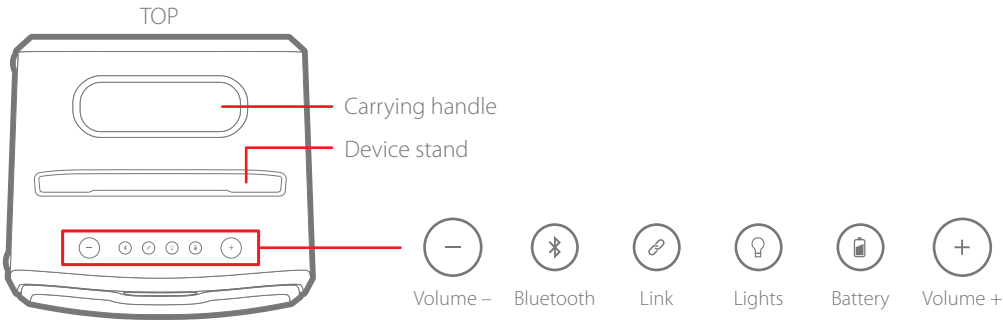


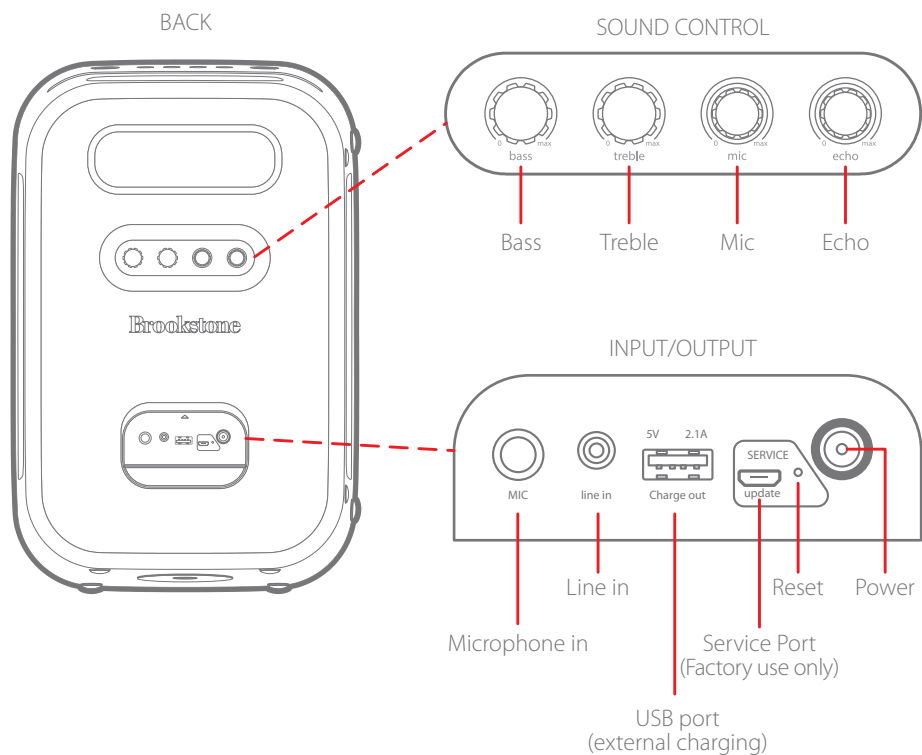
Adapter



User Guide

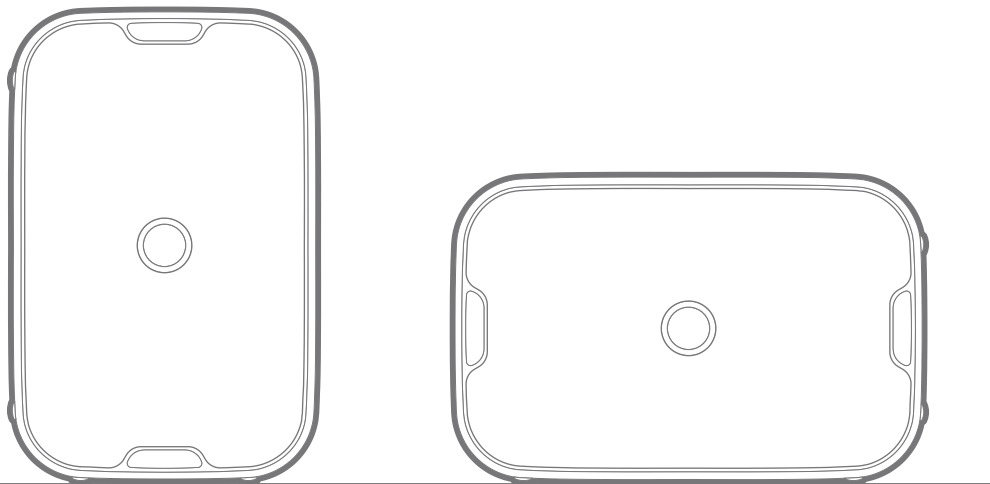
# LOCATION OF CONTROLS





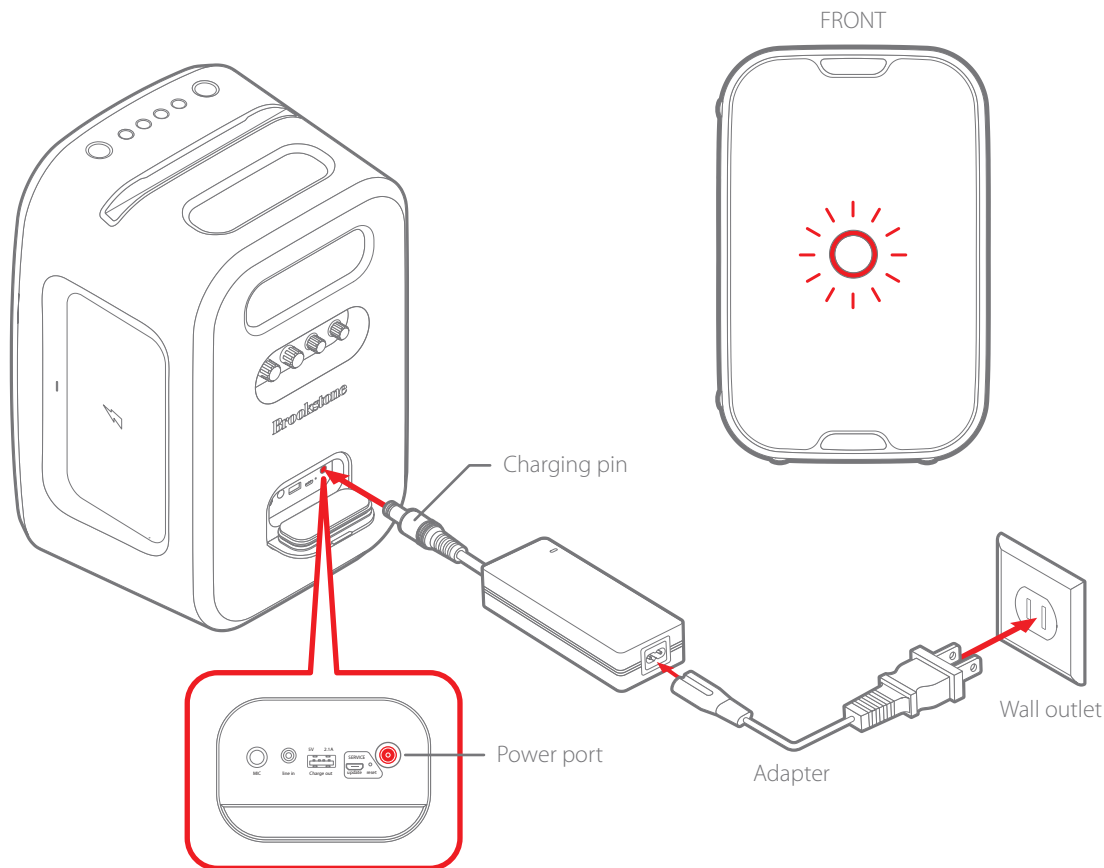
## SPEAKER PLACEMENT

Place the speaker as shown below, on a flat and stable surface.



# CHARGING

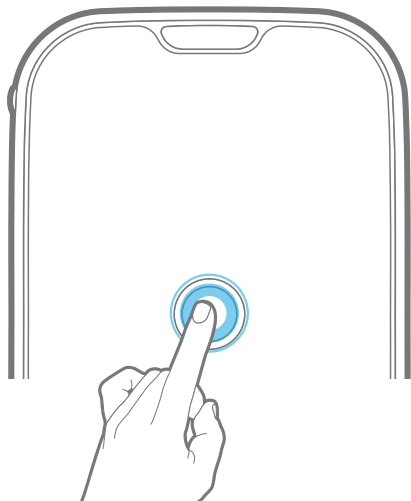
Insert the charging pin of the adapter into the speaker's power port as shown below and connect the other end to a wall outlet. The speaker's LED indicator will light up red while charging and turn off when fully charged.



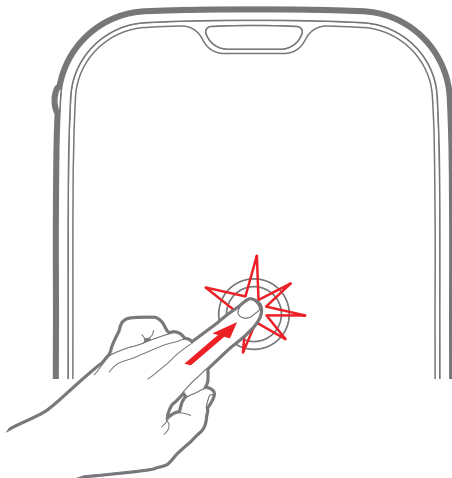
# POWER BUTTON

The Power button is used to power the speaker on/off or play/pause your music.

The power button is touch sensitive, do not push it down hard when using it.



Correct  
Gently touch the Power button



Incorrect  
Don't push down on the Power button



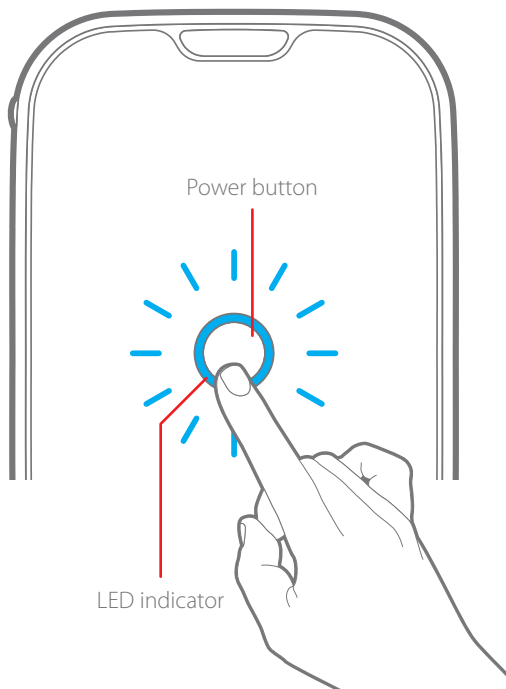
# POWER ON/OFF

## Power On

Touch and **HOLD** the Power button for 2 seconds until the speaker powers on.

## Power Off

Touch and **HOLD** the Power button for 2 seconds until the speaker's LED indicator turns off.



## Notes:

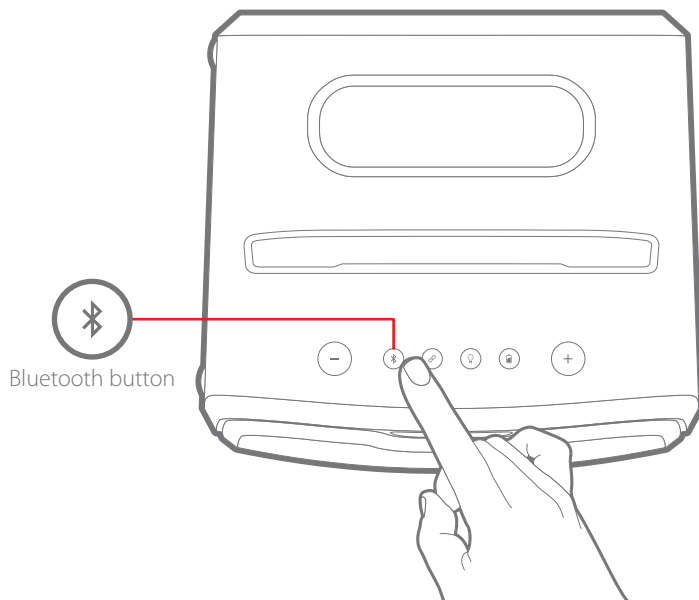
1. The speaker will automatically power off after 15 minutes when it's not connected to a device.
2. The speaker will automatically power off after 30 minutes of inactivity.

# BLUETOOTH PAIRING

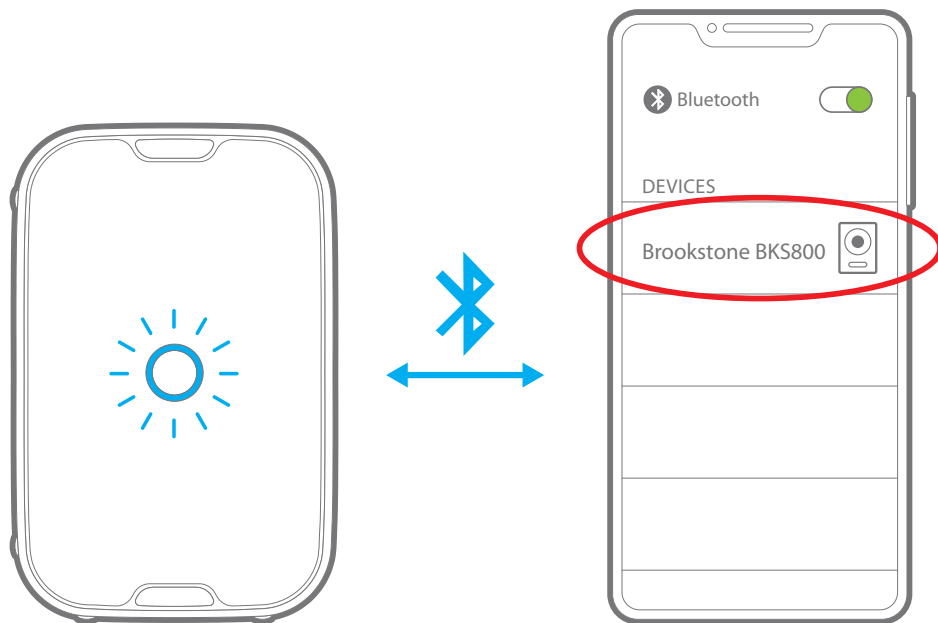
## Connecting

1. While powered on, press the Bluetooth button and the speaker's LED will slowly flash **BLUE** indicating that the speaker is in Bluetooth pairing mode.

Bluetooth Profile: A2DP V1.3, AVRCP V1.6



2. Open your device's Bluetooth menu and find **Brookstone BKS800** and select it to pair.
3. Once paired, the voice prompt "Connected" will be heard and the speaker's LED indicator will turn solid **BLUE**.

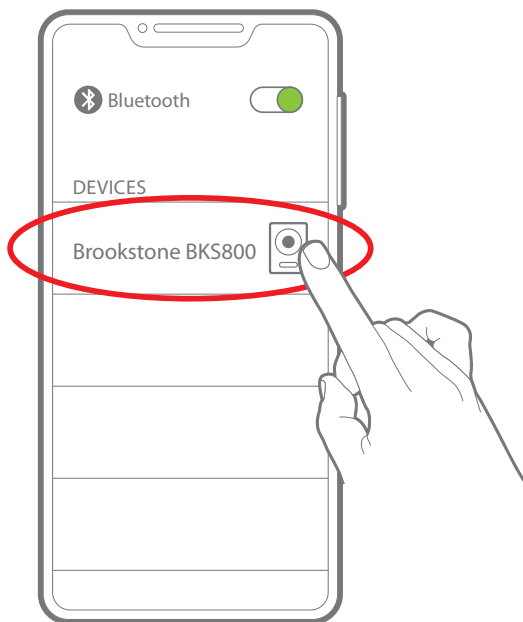


### Connecting a second device

If you would like to connect another device to the speaker, simply repeat the pairing process. Up to two devices can be connected to the speaker simultaneously.

## Disconnecting

Open your device's Bluetooth menu and find **Brookstone BKS800** and select it to disconnect.

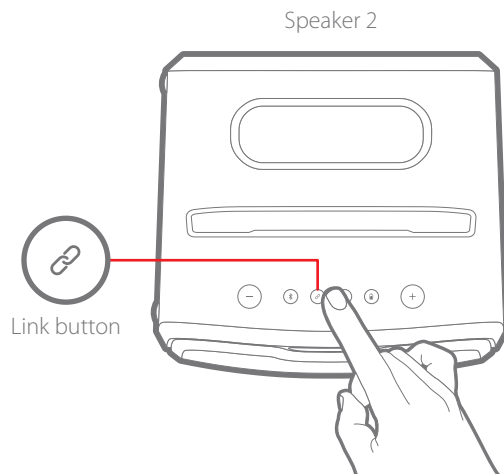
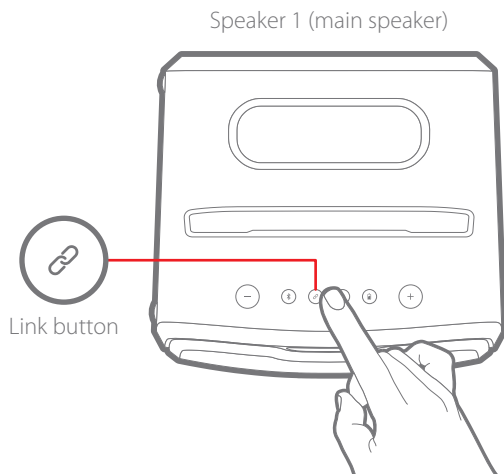


## LINKING TWO SPEAKERS

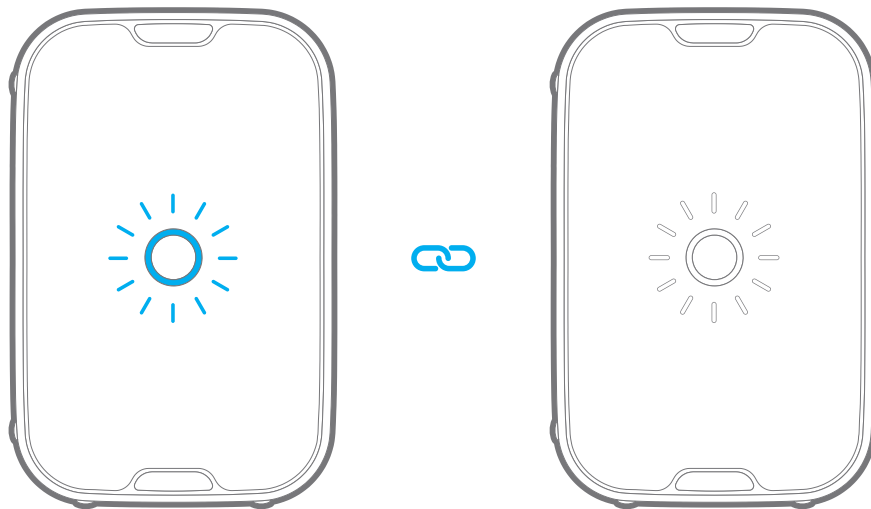
You can link two Brookstone Big Blue Party speakers to create a TWS (true wireless) pairing. Before beginning the linking process, make sure that only one of the speakers (not both speakers) is paired and connected to a Bluetooth enabled device (see page 8). We will refer to that speaker as **Speaker 1** (main speaker) and the other speaker as **Speaker 2**.

**Note:** Make sure that only one speaker is paired to a Bluetooth device before going through the linking process. If both speakers are connected to a Bluetooth device, it will cause the speakers to factory reset after the linking process is completed.

1. Press the "Link" button of either speaker until you hear the "Linking" voice prompt and the LED indicator of that speaker starts quickly flashing white. Repeat the process for the other speaker.



2. Once the speakers are linked, you'll hear the "Speaker Linked" voice prompt and the LED indicator of **Speaker 1** (main speaker) will turn solid **BLUE** while **Speaker 2** will be solid **WHITE**.



Speaker 1 (main speaker)

Speaker 2

The main speaker that is connected to a Bluetooth enabled device and which is used as the audio source.

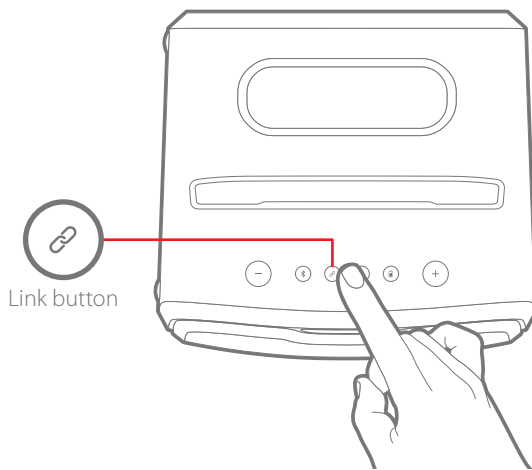
The additional speaker that is linked to the main speaker.

### Note:

When the speakers are linked, Right and Left channels are created by default. To play the same sound on both speakers, press and hold the Link button of any speaker for 3 seconds. The link button LED of that speaker will flash once to confirm the change. Repeat the process to return to the default sound mode of Left and Right channels.

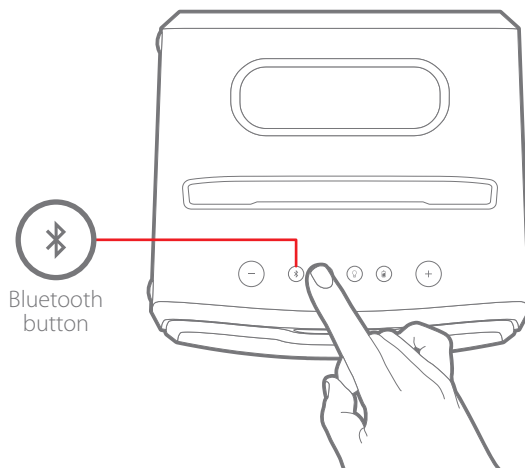
### Unlinking the speakers

Press the "Link" button of either speaker to unlink them, you'll hear the "Unlinked" voice prompt. The LED indicator of **Speaker 1** will remain solid **BLUE** while **Speaker 2** will slowly flash **WHITE**.



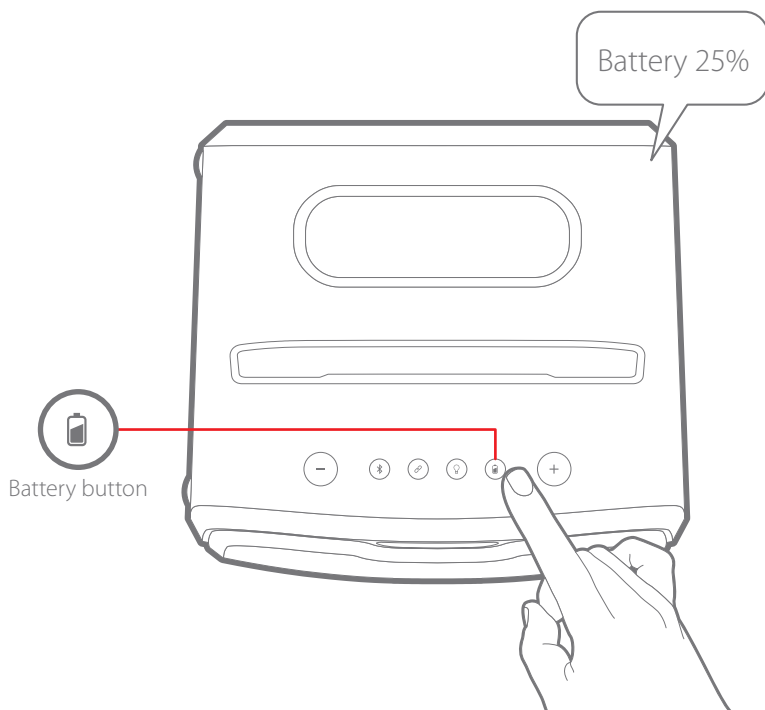
### Disconnecting a device from a linked speaker

Press the "Bluetooth" button of **Speaker 1** and you will hear the voice prompt "Disconnected" and the LED indicator of that speaker will slowly flash **BLUE**. You can now connect that speaker to another device.



# BATTERY INDICATOR

Press the battery button on the top of the speaker to know the current battery level.

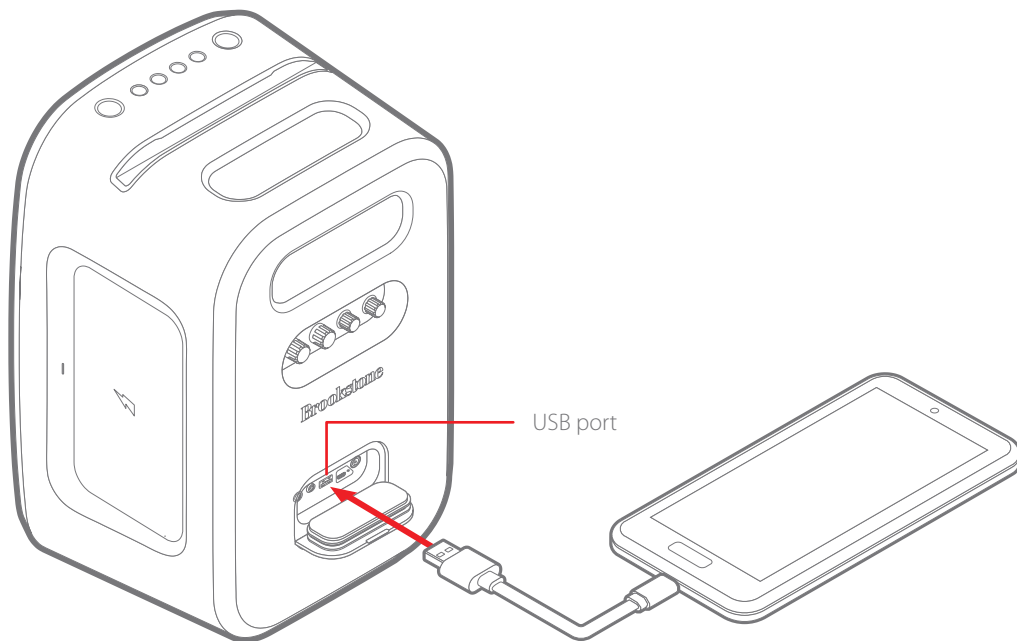




## POWER BANK

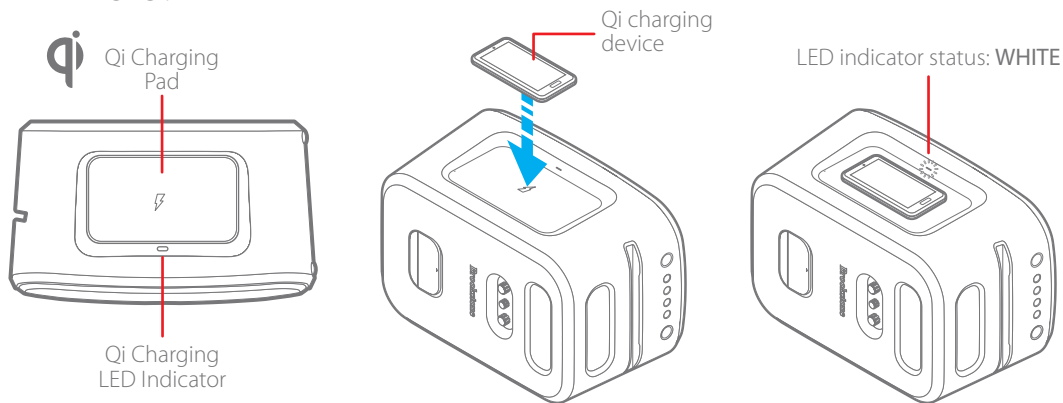
Use the “USB Charging Output” port as shown below to charge your devices.

**Note:** When charging external devices from the USB port, please make sure the speaker is powered on or plugged into a wall outlet.

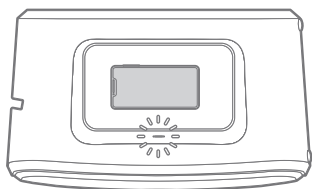


## Qi WIRELESS CHARGING PAD

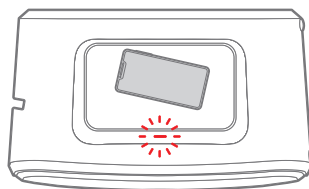
The speaker includes a Qi-certified pad which can be used to wirelessly charge devices that support Qi charging. Place the device on the pad as shown below. The LED indicator will turn on **WHITE** when the device is placed properly on the charging pad and the LED indicator will shut off when the device is removed from the charging pad.



**Note:** If the LED indicator turns on **RED**, the device is not properly placed on the pad. Slightly move the device until the LED indicator lights up **WHITE**.



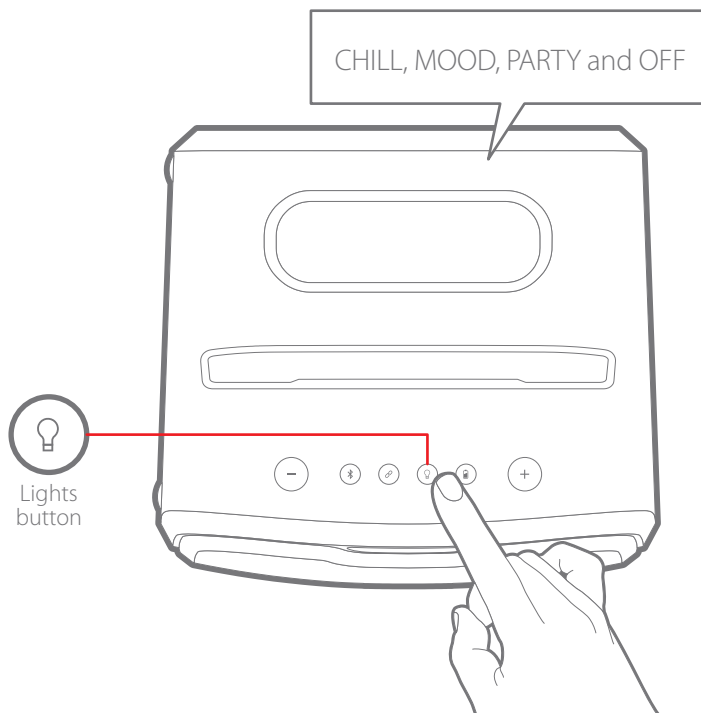
✓  
Properly placed



✗  
Improperly placed

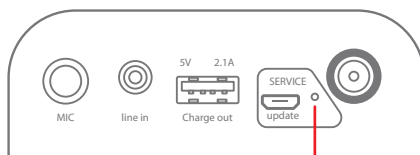
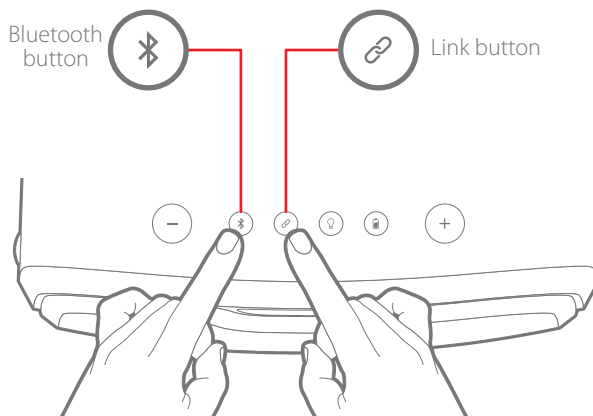
## LIGHT MODES

There are four light modes to choose from: **CHILL (default)**, **MOOD**, **PARTY**, and **OFF**. Press the "Lights" button to toggle between the different modes.



# FACTORY RESET

To return the speaker back to its factory default settings, press and HOLD the Bluetooth and Link buttons for 5 seconds. You'll hear the **"Factory reset complete"** voice prompt and the LED of the Power button will flash **RED** 3 times. The speaker will automatically enter the Bluetooth Pairing mode and the LED of the Power button will flash **BLUE**.



Reset hole

If you are experiencing problems with the speaker, or if some of the buttons don't work, insert a pin into the Reset hole for 5 seconds until the speaker powers off.

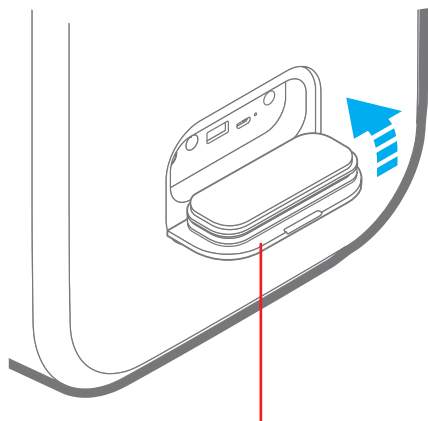


## WATERPROOF RATING – IPX5

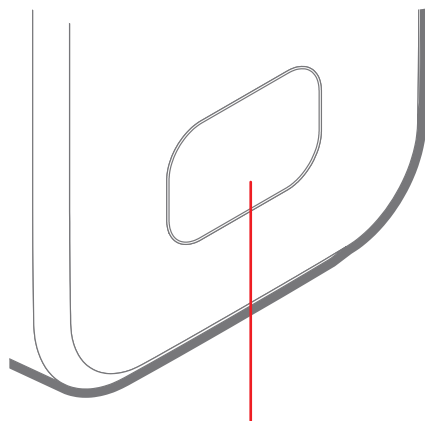
- This speaker has an ingress protection rating of 5 (IPX5). This means it can resist a sustained, low-pressure water jet spray.
- The protective rubber seal needs to completely cover the speaker's input panel to protect it from water damage.
- Dry the speaker off completely before charging or using the AUX inputs.
- Do NOT charge near sources of water or wet areas.

### BEFORE EXPOSING TO WATER:

- REMOVE ALL CABLES CONNECTED TO THE SPEAKER
- MAKE SURE THE PORTS COVER IS SEALED TIGHTLY
- DO NOT EXPOSE TO WATER WHILE CHARGING



Ports cover



Seal the ports cover tightly.

# FCC INFORMATION

This device complies with Part 15 of the FCC Rules. Operation is subject to the following two conditions: (1) this device may not cause harmful interference, and (2) this device must accept any interference received, including interference that may cause undesired operation.

**Warning:** Changes or modifications to this unit not expressly approved by the party responsible for compliance could void the user's authority to operate the equipment.

**NOTE:** This equipment has been tested and found to comply with the limits for a Class B digital device, pursuant to Part 15 of the FCC Rules. These limits are designed to provide reasonable protection against harmful interference in a residential installation. This equipment generates, uses and can radiate radio frequency energy and, if not installed and used in accordance with the instructions, may cause harmful interference to radio communications. However, there is no guarantee that interference will not occur in a particular installation. If this equipment does cause harmful interference to radio or television reception, which can be determined by turning the equipment off and on, the user is encouraged to try to correct the interference by one or more of the following measures:

- Reorient or relocate the receiving antenna.
- Increase the separation between the equipment and receiver.
- Connect the equipment into an outlet on a circuit different from that to which the receiver is connected.
- Consult the dealer or an experienced radio/ TV technician for help

## Information Regarding Exposure to Radio Frequency Energy

Your device is designed and manufactured not to exceed the emission limits for exposure to RF energy set by the Federal Communications Commission of the United States (FCC). Information on your Device is on file with the FCC and can be found under the Display Grant section of <http://www.fcc.gov/oet/ea/> after searching on the FCC ID for your Device, which can be found on the back of the Device.

## LITHIUM POLYMER BATTERY WARNINGS

This device contains a non-removable Lithium-Polymer battery. The battery must be recycled or disposed of properly. Contact your local waste management office for information on battery recycling or disposal.



## Rating Label Definitions



Direct current symbol.



This symbol signifies the product must not be discarded as household waste, and should be delivered to an appropriate collection facility for recycling. Proper disposal and recycling helps protect natural resources, human health and the environment.



This symbol signifies and declares that this equipment has battery charging which complies with California CEC and energy efficiency.



This symbol signifies that this is a wireless device powered by Bluetooth® technology. The Bluetooth® word mark and logos are registered trademarks owned by Bluetooth SIG, Inc., used under license.

# LIMITED WARRANTY

## 1-Year Limited Warranty

Territory: United States/Canada

### LIMITED WARRANTY TO ORIGINAL CONSUMER

This product as supplied and distributed new by an authorized retailer is warranted by Southern Telecom, Inc. to the original consumer purchaser against defects in materials and workmanship ("Warranty") as follows:

#### To obtain warranty service:

- Visit our website at [www.southern telecom.com](http://www.southern telecom.com)
- Select **"Product Support"**
- Select the brand and model of your device
- Select **"Service Request"** and fill out the form to begin your inquiry
- Exchanges require dated proof of purchase from an authorized retailer

Your product will be repaired or replaced, at our option, for the same or similar model of equal value if examination by the service center determines this product is defective. Products received damaged as a result of shipping will require you to file a claim with the carrier.

#### Warranty service not provided

This warranty does not cover damage resulting from accident, misuse, abuse, improper installation or operation, lack of reasonable care, unauthorized modification including software modifications such as the installation of custom firmware. This warranty is voided in the event any unauthorized person opens, alters or repairs this product. All products being returned to the authorized service center for repair must be suitably packaged.

NO WARRANTIES, WHETHER EXPRESS OR IMPLIED, INCLUDING, BUT NOT LIMITED TO, ANY IMPLIED WARRANTIES OF MERCHANTABILITY OR FITNESS FOR A PARTICULAR PURPOSE, OTHER THAN THOSE EXPRESSLY DESCRIBED ABOVE SHALL APPLY. DISTRIBUTOR FURTHER DISCLAIMS ALL WARRANTIES AFTER THE EXPRESS WARRANTY PERIOD STATED ABOVE. NO OTHER EXPRESS WARRANTY OR GUARANTY GIVEN BY ANY PERSON, FIRM OR ENTITY WITH RESPECT TO THE PRODUCT SHALL BE BINDING ON DISTRIBUTOR. REPAIR, REPLACEMENT, OR REFUND OF THE ORIGINAL PURCHASE PRICE - AT DISTRIBUTOR'S SOLE DISCRETION - ARE THE EXCLUSIVE REMEDIES OF THE CONSUMER. IN NO EVENT WILL DISTRIBUTOR OR ITS MANUFACTURERS BE LIABLE FOR ANY INCIDENTAL, DIRECT, INDIRECT, SPECIAL, PUNITIVE OR CONSEQUENTIAL DAMAGES (SUCH AS, BUT NOT LIMITED TO, DAMAGES FOR LOSS OF PROFITS, BUSINESS, SAVINGS, DATA OR RECORDS) CAUSED BY THE USE, MISUSE OR INABILITY TO USE THE PRODUCT. EXCEPT AS STATED HEREIN, NO OTHER WARRANTIES SHALL APPLY. NOTWITHSTANDING THE FOREGOING, CONSUMER'S RECOVERY AGAINST DISTRIBUTOR SHALL NOT EXCEED THE PURCHASE PRICE OF THE PRODUCT SOLD BY DISTRIBUTOR. THIS WARRANTY SHALL NOT EXTEND TO ANYONE OTHER THAN THE ORIGINAL CONSUMER WHO PURCHASED THE PRODUCT AND IS NOT TRANSFERABLE.

Some countries, states or provinces do not allow the exclusion or limitation of incidental or consequential damages or allow limitations on warranties, so limitation or exclusions may not apply to you. This warranty gives you specific legal rights, and you may have other rights that vary from state to state or province to province. Contact your authorized retailer to determine if another warranty applies.

All product names, trademarks, and registered trademarks are property of their respective owners. All company, product, and service names used in this document are for identification purposes only. Use of these names, trademarks, and brands does not imply endorsement.

The Bluetooth® word mark and logos are registered trademarks owned by Bluetooth SIG, Inc., used under license.

**Brookstone®**