



***CIPTON***

LED Light Up  
**Basketball Kit**

**Instruction Manual**

CPBDL501BB

# Before You Begin...

## **READ CAREFULLY AND KEEP THIS MANUAL FOR FUTURE REFERENCE**

### General Warnings

- Adult supervision required.
- Do not use in the rain, sleet or snow. Keep away from water and extreme temperatures.
- Adult supervision is required when performing any maintenance on the ball.
- The ball, wrist bands and remote control come with built-in batteries which should not be disposed of with regular household waste. Follow all local laws and regulations in disposing of batteries.
- Do not open these products or attempt to repair the units yourself should they not be working.
- Do not expose the units to extreme temperatures (heat or cold), open flames, humid conditions, or wet conditions.
- Do not submerge in water.

### In the Box

- Basketball (x1)
- 5-ft. Rim Light with Remote Control (x1)
- Adhesive Hook-and-Loop Fastener (x1)
- Hook-and-Loop Fastener Strips (x8)
- LED Bracelets (x4)
- 12" Air Pump (x1)
- Carrying Bag (x1)
- Instruction Manual (x1)

# Using the Basketball

## Inflating the Basketball

1. Attach an inflation needle onto the included ball pump.
2. Carefully stick the inflation needle into the valve on the ball.
3. Pull and push the handle on the back of the ball pump to pump up the ball to a PSI of between 7 and 9. Be careful not to over-inflate the ball, as this can pop it.
4. When finished, remove the inflation needle from the ball, and store the ball pump away.

## Basketball LED Setup

- The ball comes with batteries already installed. Pull the tab marked "PULL" to remove the spacer insulating the batteries.
- To activate the lights, bounce the ball. The lights are impact-activated.
- If the spacer is broken and cannot be pulled out, or if the ball does not light up after the spacer is removed, try following the steps in the **Replacing the Batteries** section below to re-install the light unit or replace the batteries.

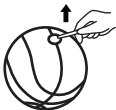
## Replacing the Basketball Batteries

**CAUTION:** Do not use a sharp tool to open the cap. It is recommended to use a key. These procedures should be done carefully, under adult supervision ONLY.

Keep all batteries, wrenches, plastic bags and other accessories away from babies, children and pets. They are NOT toys. They can cause injury, suffocation, poisoning or other dangers.

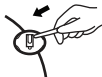
**(Continued on the next page)**

## Replacing the Basketball Batteries (cont'd)



### STEP 1

Deflate the ball slightly and use a non-sharp tool such as a key to pry open the end cap. Do not use a sharp tool as this may damage the ball.



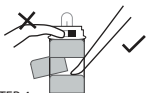
### STEP 2

Use the hook of the tool to pull out the light unit.



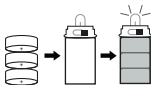
### STEP 3

Pull the transparent tube containing the batteries out of the unit.



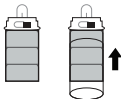
### STEP 4

Use the tool to push the batteries out of the unit as shown above.



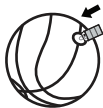
### STEP 5

Insert 3 new LR44 coin cell batteries with the positive poles facing down. Do not mix old and new batteries, or mix different types or brands of battery.



### STEP 6

Place the transparent tube of batteries back into the light unit.



### STEP 7

Return the light unit into its container in the ball.



### STEP 8

Replace the cap, with the textured side facing outward. Press into the ball until secured.



### STEP 9

Use the assembly tool to adjust the cap so that it is flat against the ball surface.

# Using the Rim Lights

## Rim Light Battery Installation

1. Undo the 2 clasps on the rim lights' attached battery compartment, and open the compartment.
2. Install 3 AA-sized Alkaline batteries, following the polarity (+/-) diagram in the compartment. Do not mix old and new batteries, or mix different brands or types of battery.
3. Close the compartment, and lock the 2 clasps.

## Rim Light Installation

1. Install batteries according to the instructions above.
2. Mount the battery pack to your backboard using the included 3M™ adhesive hook-and-loop fastener.
  - Peel off one side's adhesive, stick on the battery pack. Press and hold for 1 minute.
  - Peel off the other side's adhesive, stick on desired location. Press + hold for 1 min.
3. Secure the lights to the rim by wrapping the included hook-and-loop fastener strips in tight circles around.

## Using the Rim Lights

- Press the button on the outside of the battery pack to turn the rim lights ON.
- Press the button additional times to flip through the different modes, and to turn the lights OFF.
- The rim lights can also be controlled with the included remote control. See the **Using the Rim Lights Remote Control** section below for details.

## Using the Rim Lights Remote Control

1. Set up and install the rim lights according to the above instructions.
2. Remove the plastic tab sticking out of the bottom of the remote control.
3. Press the remote control buttons to turn the rim lights ON/OFF, change colors, and set an automatic shutoff timer.

# Using the LED Bracelets

## LED Bracelet Setup

The LED bracelets come with batteries already installed.

To activate the LED bracelets, remove the plastic tabs sticking out of the sides of the battery units.

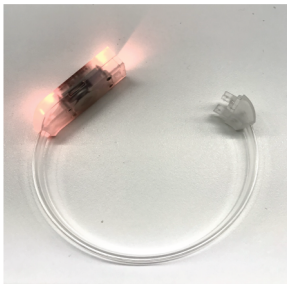
## Opening/Closing the Bracelet

- To open the bracelet, pull apart at the clasp near the top of the bracelet. See photo at right.
- To close the bracelet, line the clasp up, and push closed.

## Powering ON/OFF

- Press the button on the side of the bracelet's battery pack to power the LED lights ON.
- Press the button additional times to flip through the different LED light colors and modes.
- Press and hold the button to power the LED lights OFF.

**Note:** You MUST remove the plastic tab to activate the batteries before the LED lights will work. If the lights are not working, check to make sure you have pulled out the tab.



# Compliance Information

## FCC Information

This device complies with Part 15 of the FCC Rules.

**Caution:** Any changes or modifications not expressly approved could void the user's authority to operate the equipment.

**Note:** This equipment has been tested and found to comply with the limits for a Class B digital device, pursuant to part 15 of the FCC Rules. These limits are designed to provide reasonable protection against harmful interference in a residential installation. This equipment generates, uses and can radiate radio frequency energy and, if not installed and used in accordance with the instructions, may cause harmful interference to radio communications. However, there is no guarantee that interference will not occur in a particular installation. If this equipment does cause harmful interference to radio or television reception, which can be determined by turning the equipment off and on, the user is encouraged to try to correct the interference by one or more of the following measures:

- Reorient or relocate the receiving antenna.
- Increase the separation between the equipment and receiver.
- Connect the equipment into an outlet on a circuit different from that to which the receiver is connected.
- Consult the dealer or an experienced radio/TV technician for help.

## Rating Label Definitions



This symbol signifies the product must not be discarded as household waste, and should be delivered to an appropriate collection facility for recycling. Proper disposal and recycling helps protect natural resources, human health and the environment.

# Warranty Information

## 90-Day Limited Warranty

Territory: United States

### LIMITED WARRANTY TO ORIGINAL CONSUMER

This product as supplied and distributed new by an authorized retailer is warranted by Southern Telecom, Inc. to the original consumer purchaser against defects in materials and workmanship ("Warranty") as follows:

#### To obtain warranty service:

- Visit our customer support portal: **[www.customersupport123.com](http://www.customersupport123.com)** and select "Support".
- Select the brand, fill out the corresponding form (exchanges require dated proof of purchase from an authorized retailer) then submit your request.

Your product will be repaired or replaced, at our option, for the same or similar model of equal value if examination by the service center determines this product is defective. Products received damaged as a result of shipping will require you to file a claim with the carrier.

#### Warranty service not provided

This warranty does not cover damage resulting from accident, misuse, abuse, improper installation or operation, lack of reasonable care, unauthorized modification including software modifications such as the installation of custom firmware. This warranty is voided in the event any unauthorized person opens, alters or repairs this product. All products being returned to the authorized service center for repair must be suitably packaged.

NO WARRANTIES, WHETHER EXPRESS OR IMPLIED, INCLUDING, BUT NOT LIMITED TO, ANY IMPLIED WARRANTIES OF MERCHANTABILITY OR FITNESS FOR A PARTICULAR PURPOSE, OTHER THAN THOSE EXPRESSLY DESCRIBED ABOVE SHALL APPLY. DISTRIBUTOR FURTHER DISCLAIMS ALL WARRANTIES AFTER THE EXPRESS WARRANTY PERIOD STATED ABOVE. NO OTHER EXPRESS WARRANTY OR GUARANTEE GIVEN BY ANY PERSON, FIRM OR ENTITY WITH RESPECT TO THE PRODUCT SHALL BE BINDING ON DISTRIBUTOR. REPAIR, REPLACEMENT, OR REFUND OF THE ORIGINAL PURCHASE PRICE - AT DISTRIBUTOR'S SOLE DISCRETION - ARE THE EXCLUSIVE REMEDIES OF THE CONSUMER. IN NO EVENT WILL DISTRIBUTOR OR ITS MANUFACTURERS BE LIABLE FOR ANY INCIDENTAL, DIRECT, INDIRECT, SPECIAL, PUNITIVE OR CONSEQUENTIAL DAMAGES (SUCH AS, BUT NOT LIMITED TO, DAMAGES FOR LOSS OF PROFITS, BUSINESS, SAVINGS, DATA OR RECORDS) CAUSED BY THE USE, MISUSE OR INABILITY TO USE THE PRODUCT. EXCEPT AS STATED HEREIN, NO OTHER WARRANTIES SHALL APPLY. NOTWITHSTANDING THE FOREGOING, CONSUMER'S RECOVERY AGAINST DISTRIBUTOR SHALL NOT EXCEED THE PURCHASE PRICE OF THE PRODUCT SOLD BY DISTRIBUTOR. THIS WARRANTY SHALL NOT EXTEND TO ANYONE OTHER THAN THE ORIGINAL CONSUMER WHO PURCHASED THE PRODUCT AND IS NOT TRANSFERABLE.

Some countries, states or provinces do not allow the exclusion or limitation of incidental or consequential damages or allow limitations on warranties, so limitation or exclusions may not apply to you. This warranty gives you specific legal rights, and you may have other rights that vary from state to state or province to province. Contact your authorized retailer to determine if another warranty applies.

**All product names, trademarks, and registered trademarks are property of their respective owners. All company, product, and service names used in this document are for identification purposes only. Use of these names, trademarks, and brands does not imply endorsement.**

Printed in China  
Designed in USA  
v1. 04-2022