

Compliance Information

READ CAREFULLY AND KEEP THIS MANUAL

FCC Information

This device complies with Part 15 of the FCC Rules.

Caution: Any changes or modifications not expressly approved could void the user's authority to operate the equipment.

Note: This equipment has been tested and found to comply with the limits for a Class B digital device, pursuant to part 15 of the FCC Rules. These limits are designed to provide reasonable protection against harmful interference in a residential installation. This equipment generates, uses and can radiate radio frequency energy and, if not installed and used in accordance with the instructions, may cause harmful interference to radio communications. However, there is no guarantee that interference will not occur in a particular installation. If this equipment does cause harmful interference to radio or television reception, which can be determined by turning the equipment off and on, the user is encouraged to try to correct the interference by one or more of the following measures:

- Reorient or relocate the receiving antenna.
 - Increase the separation between the equipment and receiver.
 - Connect the equipment into an outlet on a circuit different from that to which the receiver is connected.
 - Consult the dealer or an experienced radio/TV technician for help.
- The device has been evaluated to meet general RF exposure requirement. The device can be used in portable exposure condition without restriction.

Radiation Exposure Information

The device has been evaluated to meet general RF exposure requirement. The device can be used in portable exposure condition without restriction.

Rating Label Definitions

— Direct current symbol.

The Bluetooth® word mark and logos are registered trademarks owned by the Bluetooth SIG, Inc. and any use of such marks by Southern Telecom is under license.

Warranty Information

90-day Limited Warranty

Territory: United States/Canada

LIMITED WARRANTY TO ORIGINAL CONSUMER

This product (including any accessories included in the original packaging) as supplied and distributed new by an authorized retailer is warranted by Southern Telecom, Inc. to the original consumer purchaser against defects in materials and workmanship ("Warranty") as follows:

To obtain warranty service:

- Visit our website at www.southerntelecom.com
- Click on **Product Support**
- Select the **Brand** of your device
- Select **Service Request** and fill out the form to begin your inquiry

Or call the Customer Support number below

1-877-668-4839 (Toll Free)
Monday - Friday: 8AM - 10PM (EST)

Your product will be repaired or replaced, at our option, for the same or similar model of equal value if examination by the service center determines this product is defective. Products received damaged as a result of shipping will require you to file a claim with the carrier.

Warranty service not provided

This warranty does not cover damage resulting from accident, misuse, abuse, improper installation or operation, lack of reasonable care, unauthorized modification including software modifications such as the installation of custom firmware. This warranty is voided in the event any unauthorized person opens, alters or repairs this product. All products being returned to the authorized service center for repair must be suitably packaged.

NO WARRANTIES, WHETHER EXPRESS OR IMPLIED, INCLUDING, BUT NOT LIMITED TO, ANY IMPLIED WARRANTIES OF MERCHANTABILITY OR FITNESS FOR A PARTICULAR PURPOSE, OTHER THAN THOSE EXPRESSLY DESCRIBED ABOVE SHALL APPLY. DISTRIBUTOR FURTHER DISCLAIMS ALL WARRANTIES AFTER THE EXPRESS WARRANTY PERIOD STATED ABOVE. NO OTHER EXPRESS WARRANTY OR GUARANTY GIVEN BY ANY PERSON, FIRM OR ENTITY WITH RESPECT TO THE PRODUCT SHALL BE BINDING ON DISTRIBUTOR. REPAIR, REPLACEMENT, OR REFUND OF THE ORIGINAL PURCHASE PRICE - AT DISTRIBUTOR'S SOLE DISCRETION - ARE THE EXCLUSIVE REMEDIES OF THE CONSUMER. IN NO EVENT WILL DISTRIBUTOR OR ITS MANUFACTURERS BE LIABLE FOR ANY INCIDENTAL, DIRECT, INDIRECT, SPECIAL, PUNITIVE OR CONSEQUENTIAL DAMAGES (SUCH AS, BUT NOT LIMITED TO, DAMAGES FOR LOSS OF PROFITS, BUSINESS, SAVINGS, DATA OR RECORDS) CAUSED BY THE USE, MISUSE OR INABILITY TO USE THE PRODUCT. EXCEPT AS STATED HEREIN, NO OTHER WARRANTIES SHALL APPLY. NOTWITHSTANDING THE FOREGOING, CONSUMER'S RECOVERY AGAINST DISTRIBUTOR SHALL NOT EXCEED THE PURCHASE PRICE OF THE PRODUCT SOLD BY DISTRIBUTOR. THIS WARRANTY SHALL NOT EXTEND TO ANYONE OTHER THAN THE ORIGINAL CONSUMER WHO PURCHASED THE PRODUCT AND IS NOT TRANSFERABLE.

Some countries, states or provinces do not allow the exclusion or limitation of incidental or consequential damages or allow limitations on warranties, so limitation or exclusions may not apply to you. This warranty gives you specific legal rights, and you may have other rights that vary from state to state or province to province. Contact your authorized retailer to determine if another warranty applies.

ART+SOUND™

All product names, trademarks, and registered trademarks are property of their respective owners. All company, product, and service names used in this document are for identification purposes only. Use of these names, trademarks, and brands does not imply endorsement.

Printed in China
Designed in USA
v1.05-2019

ART+SOUND™

Symphonics Wireless Jukebox



Instruction Manual AR3010

Before You Begin...

Caution

- THIS IS NOT A TOY, **please keep away from children**
- Keep away from water and extreme temperatures

Questions & Customer Support

For questions, troubleshooting or any other assistance, please visit our website at **SouthernTelecom.com** and click on **Product Support**.

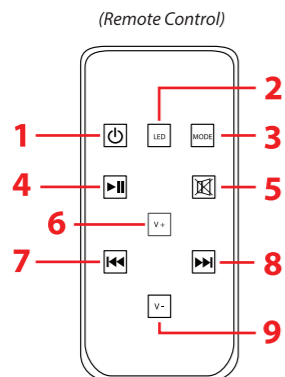
In the Box

- AR3010 - **Wireless Jukebox** (x1)
- Remote Control (x1)
- AC Adapter (x1)
- RCA Cable (x1)
- 3.5 mm Auxiliary Cable (x1)
- User Manual (x1)

Location of Controls

(Remote Control)

1. [⏻] Button
2. [LED] Button
3. [MODE] Button
4. [▶||] Button
5. [⏸] Button
6. [V+] Button
7. [◀◀] Button
8. [▶▶] Button
9. [V-] Button

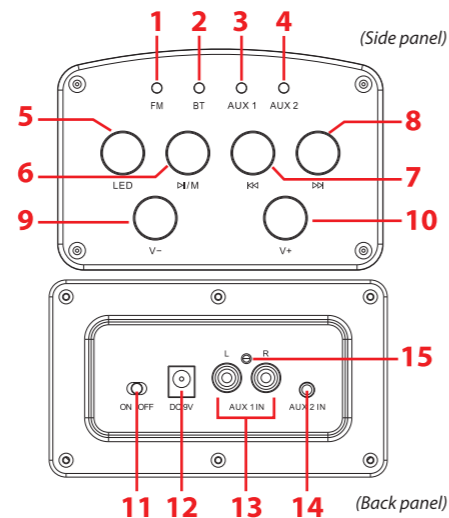


(Back panel)

11. [POWER] Switch
12. DC 9V Power Jack
13. AUX 1 IN
14. AUX 2 IN
15. FM Antenna cable

(Side panel)

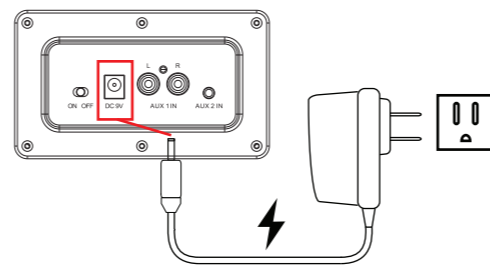
1. FM LED Indicator
2. Bluetooth LED Indicator
3. AUX 1 LED Indicator
4. AUX 2 LED Indicator
5. [LED] Button: Turn LED lights ON/OFF
6. [▶||/M] Button
Long Press - Switch input mode
Quick Press - Play/pause music
Quick Press - Autoscans radio signal (in FM radio)
7. [◀◀] Button: Skip to previous track
8. [▶▶] Button: Skip to next track
9. [V-] Button: Decrease volume
10. [V+] Button: Increase volume



Using the Jukebox

Setting Up the Jukebox

Plug the small end of the AC adapter into the DC 9V power jack on the back panel of the speaker. Plug the other end into the nearest wall outlet.



Powering ON/OFF

- Move the [POWER] switch to the ON position to power the jukebox ON. A tone will be heard and the speaker will enter Bluetooth pairing mode. The speaker will automatically re-pair to any nearby previously paired devices.
- Move the [POWER] switch to the OFF position to power the jukebox OFF.
- Press the [⏻] button on the remote to put the speaker in standby mode.

Bluetooth Pairing

1. Power the jukebox ON. A tone will be heard and the Bluetooth LED indicator will **quickly flash RED**.
2. Set your Bluetooth-enabled device to search for Bluetooth devices. When it appears, select **AR3010** from the list of found devices.
3. After a successful pairing, a tone will be heard indicating that Bluetooth is connected and the Bluetooth LED indicator will **slowly flash RED**.

Adjusting the Volume

- Press the [V+] button on the side panel or the remote to increase volume.
- Press the [V-] button on the side panel or the remote to decrease volume.
- Press the [⏸] button on the remote to mute/unmute the speaker.

Switching Modes

Long press the [▶||/M] button on the side panel of the speaker or the [MODE] button on the remote to switch between modes:

- FM Radio
- Bluetooth
- AUX 1 (RCA Cable Input)
- AUX 2 (3.5 mm Aux Cable Input)

Turning the LEDs ON/OFF

- Press the [LED] button on the side panel or remote to turn the speaker grill LED's ON/OFF.

Playing Media

To enjoy media wirelessly on your speaker, make sure that the speaker is properly paired to your Bluetooth-enabled device. If you are pairing the device for the first time, please consult the **Bluetooth Pairing** section of this guide.

Playing/Pausing Media Playback

- To pause media playback, quick press the [▶||/M] button on the side panel of the speaker, or the [▶||] button on the remote.
- To resume, quick press the same button again.

Skipping Tracks

- To skip to the next track press the [▶▶] button on the side panel or the remote.
- To skip to the previous track press the [◀◀] button on the side panel or the remote.

Using the FM Radio

Turn the jukebox ON and switch to the FM radio by long pressing the [▶||/MODE] button on the side panel of the jukebox or the [MODE] button on the remote. The FM radio LED indicator will **turn RED**.

- To scan radio stations, press the [PREV] and [NEXT] buttons on the side panel of the jukebox or the [▶▶] and [◀◀] buttons on the remote.
- Quick press the [▶||/M] button on the side panel or the [▶||] button on the remote to autoscans to the next radio station with a clear signal.

For better reception, place the FM antenna cable near a window or space with line of sight to the sky.

Using as a Wired Speaker

AUX 1 Input (RCA Cable)

The AUX 1 input is used with an RCA cable. Attach the left (red) and right (white) connectors to the AUX 1 jacks, then attach the other end to your stereo or other media playing device.

Change the speaker's mode to AUX 1 by long pressing the [▶||/M] button on the side panel of the speaker or by pressing the [MODE] button on the remote until the AUX 1 LED indicator turns RED.

AUX 2 Input (3.5mm Aux Cable)

The AUX 2 input is used with a 3.5 mm auxiliary cable. Attach the 3.5 mm aux cable to AUX 2 input on the speaker and the other end to the headphone jack on your media playing device.

Change the speaker's mode to AUX 2 by long pressing the [▶||/M] button on the side panel of the speaker or by pressing the [MODE] button on the remote until the AUX 2 LED indicator turns RED.

NOTE: When a device is plugged into either audio input jack, the speaker controls have limited function. You must use your connected device to control music playback.