

Legal Information

READ CAREFULLY AND KEEP THIS MANUAL

FCC Information

This device complies with Part 15 of the FCC Rules.

Caution: Any changes or modifications not expressly approved could void the user's authority to operate the equipment.

FCC Statement

Note: This equipment has been tested and found to comply with the limits for a Class B digital device, pursuant to part 15 of the FCC Rules. These limits are designed to provide reasonable protection against harmful interference in a residential installation. This equipment generates, uses and can radiate radio frequency energy and, if not installed and used in accordance with the instructions, may cause harmful interference to radio communications. However, there is no guarantee that interference will not occur in a particular installation. If this equipment does cause harmful interference to radio or television reception, which can be determined by turning the equipment off and on, the user is encouraged to try to correct the interference by one or more of the following measures:

- Reorient or relocate the receiving antenna.
- Increase the separation between the equipment and receiver.
- Connect the equipment into an outlet on a circuit different from that to which the receiver is connected.
- Consult the dealer or an experienced radio/TV technician for help.

Radiation Exposure Statement

The device has been evaluated to meet general RF exposure requirement. The device can be used in portable exposure condition without restriction.

WARNING Li-ion Battery Inside

This product is fitted with a Li-ion battery. Do not damage, open, or dismantle the battery and do not use it in damp and/or corrosive conditions. Use only with compatible chargers. Never dispose of batteries in a fire, and never expose them to high temperatures. Do not expose the product to temperatures exceeding 60°C (140°F).



Rain/Moisture Warning

- Do not expose the unit to extreme temperatures (heat or cold), open flames, humid conditions, or wet conditions.
- Do not submerge in water.
- Do not open this product or attempt to repair the unit yourself should it not be working.

Rating Label Definitions

--- Direct current symbol



This symbol signifies that the product must not be discarded as household waste, and should be delivered to an appropriate collection facility for recycling. Proper disposal and recycling helps protect natural resources, human health and the environment.



This symbol signifies and declares that this equipment complies with battery charging which complies with California CEC and energy efficiency.



The Bluetooth® word mark and logos are registered trademarks owned by the Bluetooth SIG, Inc. and any use of such marks by Southern Telecom is under license.

90-Day Limited Warranty

90-day Limited Warranty

Territory: United States/Canada

LIMITED WARRANTY TO ORIGINAL CONSUMER

This product (including any accessories included in the original packaging) as supplied and distributed new by an authorized retailer is warranted by Southern Telecom, Inc. to the original consumer purchaser against defects in materials and workmanship ("Warranty") as follows:

To obtain warranty service:

- Visit our website at www.southern telecom.com
- Click on **Product Support**
- Select the **Brand** of your device
- Select **Service Request** and fill out the form to begin your inquiry

Your product will be repaired or replaced, at our option, for the same or similar model of equal value if examination by the service center determines this product is defective. Products received damaged as a result of shipping will require you to file a claim with the carrier.

Warranty service not provided

This warranty does not cover damage resulting from accident, misuse, abuse, improper installation or operation, lack of reasonable care, unauthorized modification including software modifications such as the installation of custom firmware. This warranty is voided in the event any unauthorized person opens, alters or repairs this product. All products being returned to the authorized service center for repair must be suitably packaged.

NO WARRANTIES, WHETHER EXPRESS OR IMPLIED, INCLUDING, BUT NOT LIMITED TO, ANY IMPLIED WARRANTIES OF MERCHANTABILITY OR FITNESS FOR A PARTICULAR PURPOSE, OTHER THAN THOSE EXPRESSLY DESCRIBED ABOVE SHALL APPLY. DISTRIBUTOR FURTHER DISCLAIMS ALL WARRANTIES AFTER THE EXPRESS WARRANTY PERIOD STATED ABOVE. NO OTHER EXPRESS WARRANTY OR GUARANTY GIVEN BY ANY PERSON, FIRM OR ENTITY WITH RESPECT TO THE PRODUCT SHALL BE BINDING ON DISTRIBUTOR, REPAIR, REPLACEMENT, OR REFUND OF THE ORIGINAL PURCHASE PRICE - AT DISTRIBUTOR'S SOLE DISCRETION - ARE THE EXCLUSIVE REMEDIES OF THE CONSUMER. IN NO EVENT WILL DISTRIBUTOR OR ITS MANUFACTURERS BE LIABLE FOR ANY INCIDENTAL, DIRECT, INDIRECT, SPECIAL, PUNITIVE OR CONSEQUENTIAL DAMAGES (SUCH AS, BUT NOT LIMITED TO, DAMAGES FOR LOSS OF PROFITS, BUSINESS, SAVINGS, DATA OR RECORDS) CAUSED BY THE USE, MISUSE OR INABILITY TO USE THE PRODUCT. EXCEPT AS STATED HEREIN, NO OTHER WARRANTIES SHALL APPLY. NOTWITHSTANDING THE FOREGOING, CONSUMER'S RECOVERY AGAINST DISTRIBUTOR SHALL NOT EXCEED THE PURCHASE PRICE OF THE PRODUCT SOLD BY DISTRIBUTOR. THIS WARRANTY SHALL NOT EXTEND TO ANYONE OTHER THAN THE ORIGINAL CONSUMER WHO PURCHASED THE PRODUCT AND IS NOT TRANSFERABLE.

Some countries, states or provinces do not allow the exclusion or limitation of incidental or consequential damages or allow limitations on warranties, so limitation or exclusions may not apply to you. This warranty gives you specific legal rights, and you may have other rights that vary from state to state or province to province. Contact your authorized retailer to determine if another warranty applies.

ART+SOUND™

All product names, trademarks, and registered trademarks are property of their respective owners. All company, product, and service names used in this document are for identification purposes only. Use of these names, trademarks, and brands does not imply endorsement.

Printed in China
Designed in USA
v1. 1-2019

ART+SOUND™

Wireless LED Boombox



User Manual AR1045

Before You Begin...

Caution

- THIS IS NOT A TOY, **please keep away from children**
- Keep away from water and extreme temperatures
- Low power may cause poor Bluetooth connection or sound distortion
- Do not overcharge the battery

Questions & Customer Support

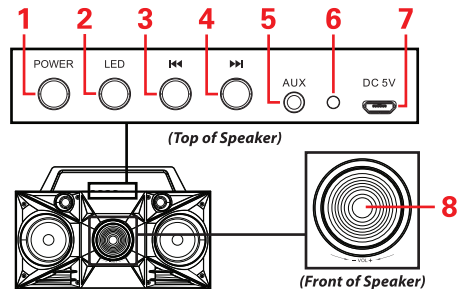
For questions, troubleshooting or any other assistance, please visit our website at SouthernTelecom.com and click on **Product Support**.

In the Box

- AR1045 - **Wireless Speaker** (x1)
- Micro-USB Charging Cable (x1)
- User Manual (x1)

Location of Controls

1. **[Power]** Button: (*Long press*) Power speaker ON/OFF
(*Short press*) Play/pause
2. **[LED]** Button: (*Long press*) Select LED light mode
(*Short press*) Select Bluetooth or AUX mode
3. **[⏮]** Button: Skip to previous track
4. **[⏭]** Button: Skip to next track
5. 3.5 mm Auxiliary Input Port
6. LED Indicator
7. Micro-USB Charging Port
8. Volume Dial



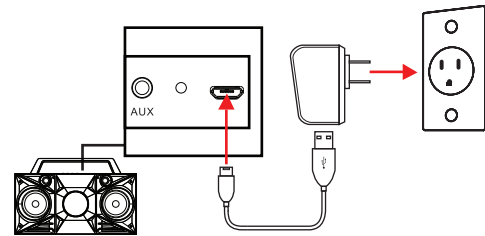
Using the Speaker

Charging the Speaker

Insert the small connector of the included charging cable into the micro-USB charging port on the top of the speaker. Insert the large connector into the USB port on a computer, a USB charging device, or a **5V USB adapter** (*not included*) and plug into a wall socket.

The LED indicator will **turn RED** while charging and turn off when fully charged.

On low power, a tone will be periodically heard indicating that the speaker needs to be charged.



Powering ON/OFF

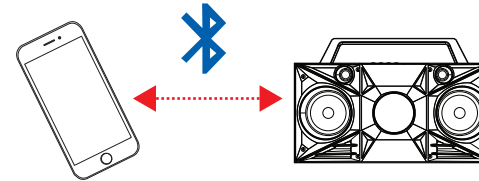
Make sure that the speaker has been charged.

- Long press the **[Power]** button to power on. A tone will be heard and the speaker will enter Bluetooth pairing mode. The speaker will automatically re-pair to any nearby previously paired devices.
- Long press the **[Power]** button to power off.

Playing Music

To enjoy music on your speaker, make sure it is properly paired to your Bluetooth-enabled device (see the **Bluetooth Pairing** section, below) or connected via 3.5 mm aux (see **Using with a Wired Device** section on the next page).

Once paired, playback and volume adjustment can be controlled with the controls on your paired device.



Bluetooth Pairing

1. Power the speaker ON. A tone will be heard and the LED indicator will **quickly flash BLUE**.
2. Set your mobile device to search for Bluetooth devices. When it appears, select **AR1045** from the list of found devices.
3. When the speaker is successfully paired, a tone will be heard and the LED indicator will **slowly flash BLUE**.

Volume Adjustment

- Turn the volume dial on the front of the speaker to adjust volume of audio.

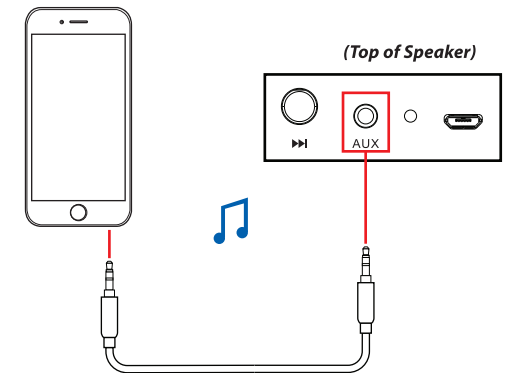
Skipping Tracks

- Quick press the **[Power]** button to pause playback. Quick press again to resume.
- Press the **[⏮]** and **[⏭]** buttons on the top of the speaker to skip tracks.

Using with a Wired Device

Insert one connector of a 3.5 mm auxiliary cable (*not included*) into the 3.5 mm auxiliary input jack on the top of the speaker. Insert the other connector into the audio output or headphone jack of your media-playing device. A tone will be heard, and the speaker's LED indicator will **turn solid BLUE**.

While connected via 3.5 mm, all Bluetooth connections will be disabled and media playback can be controlled via your connected device.



Using the LED Lights

- Press the **[LED]** button on the top of the speaker to switch between reactive light mode and solid color light mode.